

12-1908

Lookout, Volume 14, Number 3, December 1908

Wesley O. Hollister

Follow this and additional works at: <https://opencommons.uconn.edu/dcamp>

Recommended Citation

Hollister, Wesley O., "Lookout, Volume 14, Number 3, December 1908" (1908). *Daily Campus Archives*. 118.
<https://opencommons.uconn.edu/dcamp/118>

Library

THE LOOKOUT



CONN. AGRICULTURAL COLLEGE

STORRS, CONNECTICUT
DECEMBER
1908

THE LOOKOUT

POULTRY DEPARTMENT

Connecticut Agricultural College,

STORRS, CONN.

The Seventh Special Course in Poultry Culture will open January 7, 1908, continuing six weeks. Full particulars will be given on application.

IN ORDER that the production of good poultry may become more general in this State, a limited number of cockrels are offered for sale.

It is the aim of the College, while trying to breed according to the requirements of the American Standard, to keep in view at all times the **Utility Points** of the Fowl.

BRADLEY'S FERTILIZERS

THE WORLD'S BEST
BY EVERY TEST.

Bradley Fertilizer Works,
BOSTON, MASS.

E. P. CHESBRO, Auto Station.

Agent for the

**BUICK, CADILLAC
AND POPE HARTFORD.**

RENTING and REPAIRING.

129 MAIN ST.,
WILLIMANTIC, CONN.

The NORWICH BULLETIN

**IS THE FIRST DAILY TO REACH
WILLIMANTIC IN THE MORNING.**

In this way all the rural delivery routes through the surrounding towns are thoroughly covered.

THE BULLETIN HAS THE FULL ASSOCIATED PRESS REPORT

which is taken by our own telegraph operator in our office. The news is then set up on typesetting machines, enabling us to print the very latest dispatches each morning.

**SUBSCRIPTION PRICE BY MAIL: 50c. A MONTH, \$6.00 A YEAR.
SEND IN A TRIAL SUBSCRIPTION.**

REMEMBER our facilities for doing..... **JOB PRINTING** Are of the BEST.
QUICK WORK AT LOW PRICES.

THE BULLETIN CO., NORWICH, CONN.

Please mention The Lookout when writing to advertisers.

THE LOOKOUT

BOARD OF EDITORS

WESLEY O. HOLLISTER, '09, *Editor-in-Chief*

GEORGE B. TREADWELL, '09, *Business Manager*

ERWIN H. FORBUSH, '10, *Assistant Editor-in-Chief*

ASSISTANT EDITORS

PHILEMON B. WHITEHEAD, '09

RUDOLF SUSSMAN, '09

HAROLD E. BOTSFORD, '09

SARAH M. TREADWELL, '10

OLLIVER F. KILHAM, '09

THEODORE HOUSE, '10

PUBLISHED MONTHLY DURING THE COLLEGE YEAR

BY THE STUDENTS OF

THE CONNECTICUT AGRICULTURAL COLLEGE

Contents

EDITORIALS	-	-	-	-	-	-	-	46
OUTLOOKS	-	-	-	-	-	-	-	47
ALUMNI NOTES	-	-	-	-	-	-	-	48
DEPARTMENT NOTES	-	-	-	-	-	-	-	50
LOCALS	-	-	-	-	-	-	-	51
ATHLETIC NOTES	-	-	-	-	-	-	-	53
THE "A" SUGAR BAG	-	-	-	-	-	-	-	57
A CADET ON THE PHILADELPHIA	-	-	-	-	-	-	-	59
EXCHANGES	-	-	-	-	-	-	-	61

Advertising rates on application

Address all letters to Business Manager

Entered at the post-office at Eagleville, Conn., as second-class mail matter

TERMS: One Dollar per Annum

THE LOOKOUT

VOL. XIV.

DECEMBER, 1908.

No. 3.

Editorials

THE MILITARY COMPANY. With the increase in the student body there is also a corresponding increase in the size of the military company. That body now numbers one hundred and ten, including the band of eleven men. In their new uniforms they make a pleasing sight assembling in front of the main building or marching about the campus.

The benefits derived from military drill are often underestimated. A moment's reflection will show that it is or should be an important factor in education. The erect and graceful carriage resulting from military training; the habit of instant obedience to orders; the ability to move in harmony with others; self-restraint; these and other equally desirable results are best obtained from military drill.

Some of our students gain; and to them the drill, aside from possible advantages in case the country should need their services in war, is of real, substantial value.

Too many of our number enter upon this branch of work with a careless or reluctant spirit. Such men not only deprive themselves of the benefits arising from training, but by their uneasiness and tendency to disregard the strict rules of military conduct introduce an element of disorder, and eventually become a detriment to the company.

KEEP OFF THE GRASS. In city parks and on many private grounds one sees the sign, "Keep off the Grass." Here at Connecticut no such order adorns the lawns. A system far more effective, although not so ornamental is used. If a path is being made from one building to another and the grass shows the effect of the trampling of many feet an impenetrable fence is speedily erected. Such a fence adorns the campus in front of the main building. This fence is made of three different kinds of wire, is guaranteed to stop anyone from a Freshman to a Senior or a Professor. A small barberry or some other prickly hedge would be just as effective, and far more ornamental and pleasing to the eye.

OUR NEW WALKS. Now that the season for snow and mud are here the students of Storrs Hall appreciate more than ever the walk from the hall across the road. No more wading;

the only regret is that the walk does not extend to the main building. Let us hope that we may soon have it.

FOOTBALL. The football season for 1908 is ended. No more hurrying from classes to get to practice. No more sacrifice of other pleasures to pound one another on the head. The season has been a most successful one, although we lost the game of games. Through the generosity of the Alumni we have been able to have a regular coach and for this we thank them. The team has shown what it can do when trained by a man who can give his whole time to it. If each one of the Alumni should endeavor to send at least one athlete to the College each year we could put out a team that would make a name for Connecticut in the athletic world. For already we are playing strong college teams.

x x x

Outlooks

How dear to our hearts are the scenes in the hallway
As out from the grub hall we rush in a horde.
The hat rack, the stairway, the students about them,
And last, but not least, the dear bulletin board.

WHAT memories, what incentives, what words of comfort and cheer intermingled with little stabs of regret or indignation may we trace to this public fountain of fact and fable. As our forefathers in days agoe hastily left their work or recreation, at the sound of Ye Towne Crier's bell and gathered to hear the news of the day, so we, when meals are over, gather about the bulletin board to find out who has been wicked and must needs pace up and down the campus next Saturday morning with a gun over his shoulder. Here, too, we may learn who has lost his fountain pen, or how much it costs to fry an egg. We may discover who the artists are among our green and white freshmen; and threats of vengeance if various members of that same class do not come up with the cash for class dues are also on exhibition. Then, lest we forget, there is the schedule of all the classes so that no one shall have an excuse for skipping. Indeed, insignificant as it may seem, the bulletin board plays an all important part in the drama of college life.

Corrections and additions are at all times visible on the various notices, some really humorous and others apparently so intended, but falling short of the mark. May we show respect to our professors and others using the board by refraining from these bursts of humor,

or, if that is impossible by using a separate card for our jokes; or, better yet, by sending them in to the editor of the LOOKOUT for publication.

Thanksgiving is over and gone, and even the resulting aches and pains are already forgotten. Hardly have we had time to look about us or to sing, Storrs Again, when we find ourselves counting the days to Christmas. Hoping that each and all may find large stockings filled to the brim, we wish our readers a very merry Christmas and a Happy New Year.

A CATASTROPHE.

Commandant,
 Tall and slim,
 Went out driving—
 Took a swim.
 Horse got frisky—
 Took a jump.
 Deac and wife
 Got a bump.
 Water cold
 Through the ice;
 Wife said that
 It wasn't nice.
 Out they waded
 Cold and wet
 Horse and wagon
 Did not get.
 Someone rescued
 Horse and buggy.
 Horse was frightened
 Wagon muddy.
 Deacon says
 Goodby to horses.
 Next time he rides
 He uses—the stage.

x x x

Alumni Notes

'08. According to common report the class of 1908 had an agreement to the effect that the first one of their number to marry must treat the rest of the class to a dinner. Whether there is any truth in the rumor we do not know; but if such an agreement was made there is no doubt on whom the penalty must fall. On Mon-

day, November 16th, C. W. Bonner entered the bonds of matrimony. The bride was Miss Marjorie Helen Barrows, of Hartford. The ceremony took place at the home of the bride. O. P. Burr, '08, acted as best man. Among the other alumni present were: C. B. Barnard, G. M. Stack, A. E. Webster, '08, and E. M. Stoddard, '07.

'07. Earl Bemis has accepted a position as farm manager in Farmington.

'06. One of the dairy students of 1906, Charles Jacobson, visited the College recently. Mr. Jacobson's brother has purchased the Farrell place overlooking the College from the north.

'02. We thought the class of 1902 was peacefully slumbering—perhaps it was, but it is not now. In a recent issue we announced the engagement of Professor G. H. Lamson; now we have two more winged birds on the list. The engagement of Lester F. Harvey to Miss Laura B. Averill of the summer school of 1906 has just been announced. Since graduating from the Connecticut Agricultural College Mr. Harvey has been conducting a farm at Romford, Conn. Miss Averill is the sister of R. J. Averill, '03, and daughter of Hon. H. O. Averill, the State Cattle Commissioner.

To go along with this comes the news that George H. Hollister has become engaged to Miss Abby M. Hicks. Mr. Hollister has been employed by the State Bureau of Entomology, while Miss Hicks has been the efficient music instructor at Storrs for more than a year. The class of 1902 is surely wide-awake. The LOOKOUT extends heartiest congratulations.

'95. Mr. A. E. Shields has been elected to the next legislature.

Valuable additions to his herd have been made by A. J. Pierpont, in the shape of stock from the Dutchland farm of the Field Brothers, Brockton, Mass.

'91. Mr. H. G. Manchester has been at Washington, D. C., attending a meeting of institute workers.

'90. C. B. Pomeroy visited the Mansfield Grange a short time ago in the capacity of deputy from the State Grange.

'88. At Wesleyan, on November 14th, C. A. Wheeler was elected President of the Connecticut Mathematical Teachers' Association.

C. H. Savage has been elected a member of the next general assembly from the town of Mansfield.

Some of the alumni attending the Rhode Island football game were: Purple, Barnard, '08; Murphy, Wemett, '07; Latimer, Harris, Stevenson, E. N. Gallup and G. H. Gallup. Also, Dewey, '05; Pomeroy, '90; E. B. Fitts, '93; H. L. Garrigus, '98; J. N. Fitts, C. J. Grant and Grace E. Seage, '06.

Department Notes

DAIRY.

EIGHT grade short-horn steers from Northern Vermont have been purchased and may be seen at the barn. These will be used by the dairy class the coming winter for judging and work in animal husbandry.

The department recently sold a pure-bred Holstein calf to C. L. Harris, Hope Farm, Burbank, N. J. Mr. Harris was a student here last year. The calf is a grandson of Minnie Hark, a famous cow that made twenty pounds of butter-fat in one week.

That the poultry men are, in measure, interested in the dairy industry is shown by the fact that Mr. H. L. Hamilton, Secretary of the Poultry Association, Ellington, Conn., bought a pure-bred Guernsey calf of the Dairy Department, a short time ago.

Mr. H. S. Lyman traded a twenty months' old Holstein heifer with the Department, for a yearling Holstein bull. Mr. Lyman's home is at Talcottville, Conn.

POULTRY.

The College flock has been materially strengthened, both as concerns utility and showing, by the addition of several excellent pens of new stock, secured from prominent poultry farms of New England and New York. These pens consists of the following varieties: Barred Plymouth Rocks, both cockerel and pullet matings; White Plymouth Rocks, White Wyandottes, Single Comb White Leghorns, Rose Comb Brown Leghorns, and Black Langshans. In every instance these birds are from stock that has been bred in line for many generations and will be used as a foundation of the College flocks of these varieties.

Trap nests are being put in every house, so breeding operations of next season may be carried on accurately. By the use of these nests, pedigree trays on the incubators, toe punches, leg bands, etc., it will be possible to know the parentage, both sire and dam, of each chick.

The Department is actively engaged in preparing for the Short course which opens January 5th and continues for six weeks. Many important changes will be made from last winter.

Socals

THIS fall, contrary to the usual custom, the Junior Rhetoricals were the first to be given. The following programme was carried out: Readings by Miss Beers, Messrs. Ashcraft, Close, Hale and Emmons. Debate: Subject, Resolved, "That the United States Government should control the railroads of this country." The speakers for the affirmative were: Scofield, Jennison, and House; for the negative: Hall, Barnes, and Hendryx. Judges: Gamble, Parsons, and Whitehead. Critics: Affirmative, Lockhart; negative, Rich. A character sketch, "The Crystal Gazer," was given by Miss Smith and Miss Edna Jackson.

"Shall we have someone tell fortunes?" And a voice from the corner replied: "No, it isn't fair to have one girl do all the holding hands."

This was overheard on the tennis court one Tuesday afternoon:
Hungerford—"What time is it?"

Friend—"Five o'clock."

Hungerford—"Whew! I must go in, for it takes me a hour and a half to get ready to go to the Cottage."

October 31st the young ladies gave their annual Hallowe'en party at the Cottage. Jack-o-lanterns were the principal feature of the decoration. A great many weird, ghostly, grotesque, and amusing personages made their appearance, and the grand march was as fantastic as anything we have seen for some time. Eight forty-five was the time set for unmasking and after this all enjoyed dancing to the music furnished by Messrs. Godfrey and Lockhart.

"Say, kid, you musn't say hiccough any more."

"What shall I say?"

"Say spasmodic convulsions of the diaphragm."

Horton—"I waited on twenty-eight summer school girls!"

Listener—"Did they give you any tips?"

Horton—"Yes! Look at this tie!"

Professor—"Hendryx, what is that noise?"

Hendryx (peering from window)—"I don't see any noise."

It was ever thus:

Waiter at the serving room

Wishes steaks would come;

Maiden at the table

Beams upon him *some*;

While the cook so slow

Is filling up the plates,

Many smiles go down the line

Unto him who waits.

Edna—"You will give an extemporaneous speech."

Kathryn—"Goodness! Have I got to write it out first?"

The young ladies gave their reception for November, Friday evening the thirteenth. About fifty were present. Light refreshments were served and dancing followed until ten-thirty.

Yes, we all agree in saying
That the church bell rings on time;
But we're not prepared for meeting
When it rings at seven nine.

President and Mrs. Beach gave an "at home" Wednesday evening, November eleventh.

Edna—"Don't freeze, Hall."

John Henry—"Oh, you can't freeze him, for he is frozen onto already."

The Eclectic Literary Society gave a smoker, Sunday, November 21st, to its alumni members and friends.

The second team played a team from Rockville between the halves of the Wesleyan Academy game, November 14th, beating them 6 to 0. On November 21st they beat Windham High, 10 to 0, at Willimantic.

Mr. Newman says that he has lived in the woods all his life. We do not doubt this in the least but it seems peculiar that he does not know of the *motzu* tree.

First Waiter—"Have you noticed that every time I look over at the table she smiles at me?"

Second Waiter—"Yes, but I should think she would ask to have her seat changed, so that she would not have to twist her neck so to look at you."

That game—"May I have the first and last dance," which was so popular last year seems to be coming into vogue again.

Last month the presence of Rev. Mr. Starr at our morning chapel service was a pleasant surprise. We hope that we shall hear and see our former chaplain often.

The students announce that, beginning Monday, November 2d, they will be at home on Monday, Tuesday, Wednesday and Thursday evenings from 8 until 10.30 o'clock.

A.—"What is on the bill of fare?"

B.—"Gee! you have been here four years now and don't know the bill of fare by heart yet!"

First Student—"Did you pass in geology?"

Second Student—"No, I fell down on the rocks."

The watery accident which happened to one of our faculty was

probably a judgment of Jupiter, because of the victim's failure to offer up cigars to the gods.

Kenyon is tired of the wicked world and has become a hermit.

Miss S. D. Rice, of Providence, R. I., has been engaged to take charge of the dining-room beginning December 1st.

Miss Ethel Walker returned to her duties in the office November 23, after an absence of five weeks.

Bob and Hall are candidates for the presidency of the Fussers' Club.

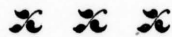
Heard in Sophomore Geometry—"Sullivan," said the professor, "If you must play come over and play with my children Saturday."

Edna says that last year she had six fellows on the string and stung them all. Evidently she is trying to do even better this year.

One of the professors bought at the Farrell auction a jug, a set of wine glasses and a smoking set. No doubt the "short horns" will be entertained in style.

E. M. Stoddard and P. B. Whitehead attended "Chuck" Bonner's wedding, November 16th.

To familiarize the cadets with battalion drill the commandant has divided the present company into two companies, A and B. This, however, is only for special battalion drill.



Athletic Notes



CONNECTICUT, 65. WESLEYAN, 2nd, o.

CONNECTICUT played Wesleyan, 2nd, on College field, October 31st, in a very one-sided game. It turned out to be nothing but a practice game for Connecticut. The home team made gains on all plays. A number of good men on the Connecticut team were not put in as it was entirely unnecessary. The line-up:

CONNECTICUT.

WESLEYAN, 2d.

Botsford, re.....le, Hitchcock
 Lawlor, rt.....lt, Liebold
 Parsons, rg.....lg, Simms
 Loveland, c.....c, Robbins
 R. A. Storrs, lg.....rg, Lexton
 Whitehead, lt.....rt, Thrasher, Clark
 Bothfeld, le.....rg, Decteric
 Pike, qb.....qb, Maroon
 Conzelman (Capt.), Forbush, lhb.....rhb, Jones
 Briggs, rhb.....lhb, Rinnes
 Ivers, fb.....fb, North (Capt.)

Score: Connecticut, 65; Wesleyan 2nd, 0. Touchdowns—Botsford 3, Ivers 2, Bothfeld, Briggs, Forbush, Pike, Conzelman 2. Goals from touchdowns—Briggs 6. Goal from the field—Pike. Umpire—Prof. Lamson. Referee—Prof. Smith. Timekeeper—Proudman. Linesmen—Smith and Johnson. Time—Twenty and ten-minute halves.

CONNECTICUT, o. BOSTON COLLEGE, o.

Connecticut played Boston College on College field, November 7th, in a hotly contested game. The teams were about evenly matched as to weight, and both were fairly confident of winning. It was a game, the like of which is seldom seen at Storrs. Both teams fought like tigers and although Connecticut had the better of it throughout, it was impossible to score. Time and again the home team was within striking distance of the visitors' goal line with a fine chance of scoring only to be held for downs. Both tried the field goal and missed. Boston is the kind we like to play; game, and good and square. It was Connecticut's first game with them and it would be well to keep up relations with such an institution. They are in our class and probably always will be. The line-up:

CONNECTICUT.

BOSTON COLLEGE.

W. L. Storrs, le.....re, Green
 Whitehead, lt.....rt, Melony
 R. A. Storrs, lg.....rg, Sweeny
 Loveland, c.....c, Hartley
 Lawlor, rg.....rg, Flarety
 Newman, rt.....lt, Pierce
 Botsford, re.....le, Keefe
 Conzelman (Capt.), lhb.....rhb, Doyle
 Pike, qb.....qb, Ryan
 Briggs, Forbush, rhb.....lhb, Park
 Curtis, Ivers, fb.....fb, Bailey

Score: Connecticut, 0; Boston College, 0. Umpire—Prof. Lamson. Referee—O'Tool. Timekeeper—Proudman. Linesmen—Smith and Moriarty. Time—Two thirty-minute halves.

CONNECTICUT, 23. WESLEYAN ACADEMY, 0.

Connecticut played Wesleyan Academy on College field, November 14th, winning by a large score. The home team played fine football throughout. The first few minutes of play Connecticut found it difficult to gain ground, but a difference was soon seen and after that things were easy. All kinds of plays were worked for big gains. Curtis made some fine plays. The team worked together. Pike and Loveland carried Curtis along time and again after he was tackled. Wesleyan tried a couple of field goals, one went wide, while the other was blocked by Lawlor. There were apparently no star players for Connecticut, all the men playing well. For Wesleyan, Goodnough at quarter played the best game. He made a number of long gains on fake kicks. The Wesleyan team kicked against decisions continually, and were well supported by their manager who was referee. We do not believe the student body as a whole cares to see the same team play here again. The line-up:

CONNECTICUT.**WESLEYAN ACADEMY.**

W. L. Storrs, le.....	re, Donahue
Whitehead, it.....	rt, Wolcott
R. A. Storrs, lg.....	rg, Patterson
Loveland, c.....	c, Gilbert
Newman, Parsons, rg.....	lg, Dickinson
Botsford, re.....	le, Niquart
Conzelman (Capt.), Bothfeld, lhb.....	rhb, Dunbar (Capt.)
Briggs, Forbush, rhb.....	lhb, Nicholson
Curtis, Ivers, fb.....	fb, Dunsford
Pike, qb.....	qb, Goodnough

Score: Connecticut, 23; Wesleyan Academy, 0. Touchdowns—Curtis, 2, Conzelman, Briggs. Goals from touchdowns—Briggs 3. Umpire—Prof. Lamson. Referee—Matthews. Timekeeper—Proudman. Linesmen—Smith and Atherton. Time—Two twenty-minute halves.

CONNECTICUT, 10. RHODE ISLAND, 12.

Connecticut played the last game of the season with Rhode Island State College, on College field, November 21st. It was the most important game of the season, as the two colleges are old rivals. The visitors came to Storrs with great expectations and went back feeling as badly as if they had been beaten. The student body is satisfied that every man on the Connecticut team played to the best of his ability, and that no one man was responsible for the defeat.

The game began at ten o'clock sharp. A large number of spectators were present, among whom were many alumni. We are sorry

more were not able to be here. For those who were not, the following account may prove interesting.

Rhode Island started the game by kicking off to Connecticut. The home team tried a forward pass and lost the ball. The visitors tried an end run and then began pounding the line, soon putting the ball over for the first touchdown; also kicking the goal. The visitors then kicked off to Briggs, who ran the ball back five yards. A forward pass gave 26 yards, and Curtis made 10 yards through center. The ball was then lost on a forward pass. The visitors made 20 yards on an end run but soon lost the ball on a forward pass. Connecticut fumbled and Rhode Island recovered the ball. They made 10 yards on an end run, 15 yards on a forward pass and then lost the ball on a forward pass. Pike punted 50 yards. Rhode Island tried the forward pass and was penalized 15 yards, as the ball went across the center of their line. They then punted 26 yards. Pike drop kicked from the 40-yard line and placed the oval squarely between the goal posts.

Connecticut next kicked off, Rhode Island ran the ball back 20 yards; fumbled, recovered, gained 20 yards on a forward pass and then punted 40 yards. The home team tried another field goal but it was blocked. The visitors lost the ball on a forward pass as the whistle blew. Score, 6 to 4, in the visitors' favor.

Connecticut began the second half by kicking to Rhode Island, the visitors running back 20 yards. The home team then held them for downs and received the ball. A forward pass was tried, then Pike punted 30 yards. The visitors punted. Then Lawlor made 15 yards on tackle round. Connecticut tried another field goal but it was blocked. The visitors were held for downs. The home team lost the ball on a forward pass, the visitors fumbled and R. A. Storrs, left guard for Connecticut, recovered the ball and ran 40 yards for a touchdown, Pike and Botsford forming a splendid interference. With the score, 10 to 6, in favor of Connecticut and 17 minutes to play the home team kicked off to the Rhode Islanders who ran the ball back 40 yards. They then made 10 yards on an end run, tried a place kick which was blocked by Connecticut, and recovered by one of her players. Botsford gained 15 yards on an end round, Curtis made 5 yards through center, and Briggs made 5 yards on a crossbuck. Pike then punted 20 yards. The visitors fumbled and the home team recovered the ball, Curtis making 10 yards through center. Lawlor made 5 yards on tackle round and Connecticut lost the ball on a forward pass. Rhode Island made 15 yards on a forward pass. On Connecticut's 7-yard line the visitors tried two center plays and did not gain a foot. On

the third down, with the goal line to gain, Craig, the Rhode Island quarter-back, circled right end for a touchdown and kicked the goal. The visitors received the kickoff, lost the ball on a forward pass, were penalized for off-side and then the whistle blew for time up. The line-up:

CONNECTICUT.

W. L. Storrs, le.....re, Angilly, Hayward
Whitehead, lt.....rt, Mounce
R. A. Storrs, lg.....rg, Akiens
Loveland, c.....c, Burgess
Newman, Parsons, rg.....lg, Minor
Lawlor, rt.....lt, Hardy
Botsford, re.....le, Smith
Pike, qb.....qb, Craig
Conzelman (Capt.), lhb.....rhh, Tulley
Briggs, rhh.....lhb, Miller
Curtis, fb.....fb, Quinn

RHODE ISLAND.

Score: Connecticut, 10; Rhode Island, 12. Touchdowns—R. A. Storrs, Quinn, Craig. Goals from touchdowns—Briggs, Craig 2. Goal from field—Pike. Umpire—Smith of Brown. Referee—Gildersleeve of Wesleyan. Timekeeper—Watkinson. Linesmen—Smith and Jenkins. Time—Two thirty-minute halves.

WILLIAM F. MADDEN.

We cannot review the past season without feeling that great credit is due to William F. Madden for the manner in which he has coached, developed and inspired our football team.

His work on the Trinity College football teams was such as to attract our attention and he has exhibited the ability of not only being able to play the game, but also to show others how it should be played.

Business in his home town detained him from being here all the time and it was something of a sacrifice on his part to return at different times to carry the work along.

This is greatly appreciated by both students and alumni and we hope that it will be possible for him to return to us in football seasons in the future.

x x x

The "A" Sugar Bag

ABOUT thirty-five years ago a young man took up the business of making paper bags for sugar and flour. This particular method was not entirely new, but as yet had not been developed. The ingenious young man with the help of another who was inter-

ested in machinery, began the construction of a machine for the turning of the sides. The first man was soon left alone to complete the machine, which he did and in the succeeding years has made many improvements on it.

At present the manufacture of these bags is still carried on, although on a very small scale. The owner is seen carting the rolls of paper from the freight depot to his factory about one-half mile from the center of a quiet New England town. These huge rolls of paper, weighing from three to six hundred pounds each, are rolled from the platform of the factory to the elevator where they are hoisted to the machine room. Here is the machine over which the owner has worked so many years.

The first step in making these bags is commenced in this room. A roll of paper is placed at the rear of the machine on a revolving iron cylinder about one and one-fourth inches in diameter. The end of the paper is then threaded through a series of wooden rollers about three inches in diameter. As it goes up over the last wooden roller, one side of the paper receives a stream of paste from a small iron box which is attached just below the roller. This box contains a small iron wheel which is so placed that the upper portion will just touch the roller about one-fourth inch in from the edge of the paper. When the machine is running the revolution of the wooden wheel causes the iron wheel to revolve in the paste, thus leaving a thin streak on the edge of the paper.

After leaving the last of the series of wooden rollers, the paper is gradually bent together from each side toward the center, by means of two iron prongs, adjusted according to the width of the paper which determines the width of the bag. As the paper is bent together, it forms a seam on the back of the bag which is pasted down by running through two heavy iron rollers which crease down the sides of the bag and firmly stick them together.

From the two iron rollers, the long side of the bags moves over about eighteen inches of a flat surface before passing through a narrow aperture on the other side of which is a steel knife of convex shape. The knife moves automatically up and down cutting the bag at the desired length. Just before the side is cut a rubber stamp fastened below the machine, springs up and leaves the imprint of the size on the top of the bag.

Every time the knife cuts off a side, a cog wheel with one hundred notches turns the distance of one of the notches. Thus when the cog wheel has made one revolution, a projection on it rings a small bell which indicates to the attendant that one hundred sides have been cut. This hundred is lifted out of the trough into which they have

been falling and placed on a nearby table, alternately with each succeeding hundred.

From this room the bags are carried into an adjoining room where the "bottoms" are put in by hand. Girls do this work at benches. Each girl is supplied with a piece of zinc fastened on the side farthest from her. About fifty sides are placed under the right hand side of the zinc at once, leaving anywhere from four to ten inches exposed, according to the size of the bag. With the left hand the top piece of paper is brought back to the edge of the zinc and then down, causing the exposed end of the bag to assume the shape of two v's with their tops together. Then the left hand side is folded over so that the point goes just beyond the edge of the zinc which is really the vertical center of the two v's. The right side is folded in like manner. The bag is then removed to the left side of the worker who continues this process until she has turned one or two hundred; then she pastes down these two flaps which she has folded in the "bottom" of each bag. Often the large bags have a strip of paper inserted in the folding to make them stronger.

After the bottoms are in, the bags counted in tens, and stacked alternately so that the boys may spread them more easily in the next process up in the hot attic room where they are left to dry for one or two days.

If the bag is to be printed, it then goes down to the first floor. This process does not concern us however, so we will return to the bundling room where the bags are prepared for shipment. The bags which are still in series of ten are placed alternately in a press until there are twenty-five series. Two pieces of twine are now put around the bundle, near each end, so that as a weight descends and packs and presses into a compact bundle, they may be tied at the side of the bundle, which is directly in front of the operator.

Thus rolls of paper are manufactured into bags which are shipped to various towns in Connecticut. M. E. M., '09.



A Cadet on the Philadelphia

HAVING read many nautical books and both of my grandfathers having been sea captains, it had always been my desire to have a taste of the sea. During the summer of 1907, my father allowed me to cross the broad Atlantic as a cadet, on the Philadelphia, on the American line.

All ships of the American line carry one cadet for each thousand tons displacement or part thereof. The Philadelphia having a dis-

placement of 10,754 tons carries eleven such officers, five in the bridge watches and five in the engine room. They are shipped under the Mail Subsidy act, which requires all American built ships, either steam or sailing vessels carrying U. S. mail, to have them. They correspond to the midshipmen carried on all men-of-war and receive ten dollars a month from the government. After shipping one voyage they receive five dollars more from the steamship company.

On the seventeenth of July, I went to the shipping office and signed on. The first officer told me to report for duty at nine o'clock on the morning of nineteenth. I left my home bright and early Friday morning, reaching the ship at quarter to nine, and reported to the first officer. He turned me over to the chief quartermaster, to be set to work. I first got a suit of white duck, consisting of a pair of trousers, a blouse and a round soft hat. My first work was very hard, I sat on a box from nine o'clock until twelve, superintending the stowing of the cargo in the hold. After dinner I saw to the storing away of the liquors, to be used by the first cabin passengers on the way across. At five o'clock the work for the day was over and there was nothing to do until the next morning at eight. I turned into my bunk at half-past nine. This was one of six in a little cabin, forward on the main deck in which we ate and slept. Our meals were prepared in the first cabin kitchen, but we served ourselves.

The next morning was our sailing day and everyone was busy, seeing that all the baggage was safe aboard. The watches were set, three of the deck cadets were given bridge watches and two were turned over to the mail clerk as his assistants. The watches on the bridge were two hours on and four off, beginning at noon. I was under the chief officer and had the first watches, twelve to two, and six to eight. They lasted only while the ship was at sea.

The deck cadets rank as assistant quartermasters and were in the immediate charge of their officers. While on watch their duties consist of shining the brass on the bridge in the morning, striking the ship's bell and keeping a strict lookout for passing vessels. They were also taught to steer and most of my night watches were spent at the wheel.

The ship was run the first three days and nights on dead reckoning there being a light fog over the sea. On the evening of the third day out one of the fixed stars was seen for about fifteen minutes and our position was quickly taken by the officers on watch. On the second night out we entered the Gulf Stream and kept in it most of the way over. It is a darker blue than the rest of the ocean, about fifteen degrees warmer in summer and more than that in winter. It

also contains a species of gulf weed found nowhere else than in or near the Gulf Stream.

On the morning of the fourth day the sun came out bright and we had fair weather the remainder of the trip. The sea was smooth and the deck of the ship was as steady as a ball-room floor. We passed several large steamers and sailing vessels bound west. Schools of porpoises were seen at intervals following the ship to catch refuse thrown overboard.

At half-past eight, Saturday morning, July twenty-seventh, we sighted Bishop's Rock, and soon after Land's End and the southern coast of England. We steamed along the coast for a few hours, and at half-past one entered Plymouth Harbor, where we discharged mail and passengers without coming to a stop. Lighters came along side, were made fast and then cast off as soon as loaded. The whole process of discharging mail and passengers occupied about eighteen minutes. We then headed out across the Channel for Cherbourg, France, passing the famous Eddystone Light, on the left, as we left Plymouth.

Although the sun was shining brightly on our departure from Plymouth it was raining before we were half way across the Channel and we steamed into Cherbourg at half-past seven in a fog. We did the same here as at Plymouth in discharging mail and passengers.

We then headed northeasterly across the Channel for Southampton, passing the Isle of Wight about half-past twelve. At ten minutes of two were tied up to our berth, in Empress Docks, my first voyage across the Atlantic completed.

N. I. S., '10.

x x x

Exchanges

"THE Observer," published by the Ansonia High School has good material in it, but the arrangement might be improved as the beginning and end are somewhat abrupt. We would suggest that the heading be placed nearer the front.

We notice with pleasure that the "Owl" of "Fresno Hi" keeps up to the standard of excellence attained in the past. It is a well-arranged paper containing several good stories.

As a rule we do not favor the newspaper style for a college paper. The M. A. C. Record contains much news of interest to the M. A. C. student, but does not give us much of an idea of the literary talent

which they doubtless have, but do not employ. A weekly is, however, in some respects an improvement over a monthly edition.

Mississippi Agricultural College publishes the Reflector and a well gotten up paper it is. We can fully appreciate the knocks on the military officers of that institution in issuing their commands. As a rule, we do not approve of stories which are "To be Continued."

We're Juniors free,
Oh, happy we;
Haven't very much longer to tarry,
Just one more year
We'll stay down here;
And then go home to marry.

But double or single
There'll be no trouble;
We'll all of us be men,
For sure as creation
We'll remember our relation
To the class of 1910.

—Ex.



C. A. C. Directory

Board of Trustees.

His Excellency Rollin S. Woodruff,
President, *ex-officio*.
G. S. Palmer, Vice-President.
G. A. Hopson.
E. H. Jenkins, Ph.D.
B. C. Patterson.
The Hon. E. S. Henry.
D. W. Patten, Treasurer.
C. A. Capen, Secretary.
A. J. Pierpont.
L. J. Storrs.

Officers of Instruction and Administration.

C. L. Beach, B. Agr., B. S., President.
L. A. Clinton, M. S., Professor of
Agronomy.
A. G. Gulley, M. S., Professor of Horti-
culture and Landscape Gardening.
J. M. Trueman, B. S. A., Professor of
Dairying.
F. H. Stoneburn, Professor of Poultry
Culture.
A. F. Blakeslee, Ph.D., Professor of
Botany and Summer School Director.
W. M. Esten, M. S., Professor of Dairy
Bacteriology.
C. A. Wheeler, M. A., Professor of
Mathematics, Surveying and Physics.
H. R. Monteith, B. A., Professor of
History, Civics and English.
E. O. Smith, B. S., Professor of Eco-
nomics and English and Secretary of
the Faculty.
The Rev. O. D. Fisher, A. M., B. D.,
College Chaplain.
Alberta T. Thomas, Professor of Do-
mestic Science and Lady Principal.
J. N. Fitts, B. Agr., Instructor in Me-
chanic Arts.
E. M. Whitney, Ph. B., Instructor in
German and Librarian.
G. H. Lamson, Jr., M. S., Instructor in
Geology, Ornithology, Entomology,
Zoology and Physiology and Curator
of the Museum.
A. F. Hawes, M. F., State Forester, In-
structor in Forestry.
Orpha Cecil Smith, Instructor in Elo-
cution, English and Gymnastics.
Abby M. Hicks, Instructor in Music.
A. T. Stevens, Instructor in Horticul-
ture.
L. M. Parker, Instructor in Green-
house Work.
H. D. Edmond, B. S., Instructor in
Military Science and Drill.
H. L. Garrigus, B. Agr., Instructor in
Animal Husbandry and Farm Super-
intendent.
Elizabeth Donovan, Instructor in Chem-
istry and Physics.
E. D. Proudman, Chief Clerk and
Steward.
E. B. Fitts, Instructor in Dairying.

Students' Organization.

President, E. R. Parsons.
First Vice-President, R. A. Storrs.
Second Vice-President, T. House.
Secretary, C. D. Clark.

Alumni Association.

President, C. B. Pomeroy, Jr., '90, Wil-
limantic.
Secretary, C. R. Green, '95, Amherst,
Mass.
Treasurer, C. A. Wheeler, '88, Storrs.

Athletic Association.

President, J. H. Conzelman.
Vice-President, P. B. Roth.
Secretary, E. C. Eaton.
Treasurer, E. O. Smith.

College Shakesperean Club.

President, J. H. Conzelman.
Vice-President, E. H. Forbush.
Corresponding Secretary, J. H. Tread-
well.
Treasurer, H. E. Botsford.

Eclectic Literary Society.

President, F. A. Loveland.
Vice-President, C. E. Hood.
Corresponding Secretary, F. S. Hoff.
Treasurer, A. Pachano.

Basketball Team, '08, '09.

Captain, R. B. Briggs.
Manager, M. C. Hull.

Baseball Team, '09.

Captain, C. H. Ivers.
Manager, H. E. Botsford.
Assistant Manager, A. J. Brundage.

Football Team, '08.

Captain, J. H. Conzelman.
Manager, E. R. Parsons.
Assistant Manager, E. H. Forbush.

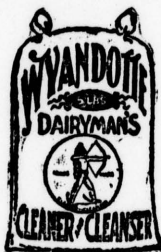
Class Presidents.

1909, Senior—H. E. Botsford.
1910, Junior—E. H. Forbush.
1911, Sophomore—P. P. Lawlor.
1912, Freshman—E. M. Lord.

A PRIZE PACKAGE

W. M. Cushman, Buttermaker for the Windsor Creamery Co., Windsor, Conn., says: "WYANDOTTE CLEANER AND CLEANSER has proven our true friend in cleansing up our plant and our patrons' dairy utensils so we were able to secure the sweepstake score at our State Dairymen's Convention. It is certainly the cheapest and most efficient washing powder we have ever used."

Not only in the creamery but for all household cleaning.



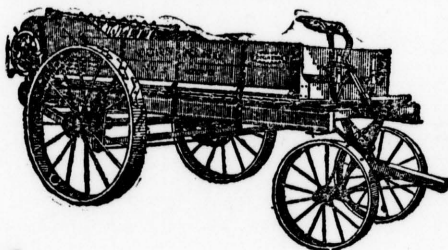
Fac Simile of Sack.

Wyandotte Cleaner and Cleanser Combines

The acme of convenience,
The height of purity,
The extreme of thoroughness and
The limit of economy.

Get a sack from your dealer and use it all. If it is not all we claim for it, return the empty sack and get your money back.

The J. B. Ford Company, Sole Mfrs., Wyandotte, Mich., U. S. A.
This Cleaner has been awarded the highest prize wherever exhibited.



Grow Big Crops

You can if you will follow these suggestions:

Restore to the soil the plant food elements that were taken from it when the crops were removed. Also supply sufficient vegetable matter to aid in making the plant food elements available and to keep the soil in the proper physical condition. Manure is the substance that contains the plant food elements and the decaying vegetable matter. Use a Corn King, Kemp 20th Century or Cloverleaf manure spreader to apply the manure, and apply it while it is fresh.

Then every inch of the soil will be equally fertilized and every ounce of the valuable plant food elements in the manure will be utilized.

There are other spreaders, of course, but it pays to get one that will give the most satisfactory service.

The Corn King and Kemp 20th Century are return apron machines, and the Cloverleaf is an endless apron machine. Each style is made in several sizes.

Ask the International local agent all about the I. H. C. spreader he handles, or write for catalog.

INTERNATIONAL HARVESTER COMPANY OF AMERICA

(INCORPORATED)

CHICAGO, U. S. A.

PATRONIZE...

MURPHY BROS.,
Livery and Feed Stable,
 Double and Single Teams at your service.
 Telephone 176-4. WILLIMANTIC, CONN.
 Successors to WILLIAMS.

**THE NEW YORK QUICK
 LUNCH ROOM,**

STEARNS & ROSEBROOKS, Proprietors.
 7 Railroad St., Willimantic, Conn.

The Leonard Prescription Pharmacy.
Prescription Specialist,
 780 Main St., WILLIMANTIC, CONN.

Established 1892.

Stephen Lane Folger,
 180 Broadway, New York.

WATCHES, DIAMONDS, JEWELRY.
 CLUB and COLLEGE PINS and RINGS,
 Gold and Silver Medals.

LATHAM & CRANE,
**Contractors and
 Builders.**

Dealers in

Paints, Oils, Paper Hangings, Room
 Mouldings, Glass, Kalsomine,
 Varnish and Brushes.

Outside and Inside Finish, Mouldings,
 Brackets and Stair Work,

Steam Power Shops, 159 Valley Street,
 Willimantic, Conn.

Please mention The Lookout when writing to advertisers.

One of the Stepping Stones

To a Well Groomed Personal
 Appearance is a pair of

THE EMERSON
\$3.50--\$4.00 Shoes
J. B. PAULHUS & CO., Willimantic, Conn.

J. O. BLANCHETTE, BAKERY and
 FANCY CAKES.
 Wholesale and Retail.

Orders for Parties, Weddings, Etc., promptly attended to
 44 Church Street, Willimantic, Conn.

THE
 BEST
 AT A
 SMALL
 PROFIT,
 NOT
 TRASH
 AT A
 SMALL
 PRICE.

**H. E. Remington
 & Co.,**
CLOTHIERS
 and
OUTFITTERS,
 Willimantic,
 Conn.

CHAS. L. BOSS,
LUMBER and COAL

....CALL AND SEE ME....

Telephone Connection. 50 North St.

Pianos, Talking Machines, &c.,

At 789 and 793 Main St.

Also a Fine Moving Picture Entertainment
 for 5c. A good place to spend a
 spare hour.

J. F. CLUNE.

TURNER'S STABLE.

Established 1857.

LIVERY AND BOARDING.

Large sheds and yard for hitching and
 feeding horses. Pleasant waiting
 room for ladies.

A. W. TURNER, (Near Opera House),
 767 Main Street, - Willimantic, Conn.

A Farmer's Lumber Yard.

2,000,000 Shingles Constantly on Hand.

Also 2,000,000 Barn Boards

At the Lowest Possible Prices.

Office and Yard:

88 Church St., Willimantic, Conn.

Willimantic Lumber & Coal Co.

P. J. TWOMEY, Yard Manager.

**SANDERSON'S
SPECIAL FORMULA
FERTILIZERS**

For all Crops.

SANDERSON Fertilizer & Chemical Co.,
Office and Works, West Haven, Conn.Post Office Address,
Box 172, New Haven, Conn.
Send for Circular.**The H. Wales Lines Co.,
BUILDING CONTRACTORS.**DEALERS IN Building Material.

MERIDEN, CONN.

D. P. Comtois814 MAIN STREET,
WILLIMANTIC, CONN

Dealer in

HOUSEFURNISHINGS**KITCHEN UTENSILS****Crockery and Glassware****MODERN**Steam Carpet Cleaning and Rough Dry
Family Washing, as well as Our
Famous Shirt and Collar Work,
is Sure to Please. Prices Right.**Maverick Laundry and
Carpet Cleaning Works,**828 MAIN ST., WILLIMANTIC, CONN.
Opp. Hooker House.**J. F. CARR & CO.****Combination
Clothiers,****Hatters and Furnishers.**

744 Main Street, Willimantic, Conn.

THE WILSON DRUG CO.,

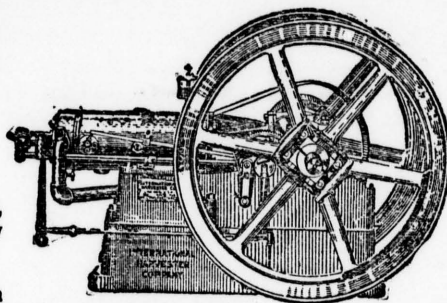
Established 1829. Incorporated 1904.

Wholesale and Retail Druggists.723 Main St. WILLIMANTIC, CONN. Opposite Depot
Eastern Connecticut's Leading Drug Store.**D. C. BARROWS,****DIAMONDS, WATCHES AND JEWELRY.**Optical Goods, Eastman Kodaks and
Supplies, Butterick Patterns.

Willimantic, - - - Conn.

Please mention The Lookout when writing to advertisers.

WHAT SIZE POWER DO YOU NEED?



You know how many hired men you have, you know how big your farm is, you know how many machines you have requiring power.

Now look at this line:

I. H. C. vertical engines—made in 2, 3 and 25-horse power.

Horizontal (portable and stationary) in 4, 6, 8, 10, 12, 15 and 20-horse power.

Gasoline tractors—in 10, 12, 15 and 20-horse power.

Famous air-cooled engines—in 1 and 2-horse power.

Also Famous sawing, spraying and pumping outfits. A complete line of Famous self-contained engines mounted on skids or ready for mounting by the purchaser.

You will surely find in this line an engine which will exactly suit your needs. For operating the small machines—grinder, fanning mill, churn, separator, pump, saw, grindstone, washing machine, fodder cutter, etc.,—one of the small I. H. C. vertical or horizontal engines will fill the bill admirably. Perhaps the work is to be done at different points on the farm, in which case we suggest that you purchase a Famous engine on skids or a regular portable engine.

For operating a thresher, sheller, husker and shredder, you will find a portable engine best. If you want to haul heavy loads and at the same time supply power from the crank shaft, get a gasoline tractor.

It isn't a question of whether you need a gasoline engine, it's simply whether you have one, because experience has proved that every farmer who does not have an engine should have one by all means. If you haven't a gasoline engine, pick out the one which will answer your purpose, then call on our local agent and investigate. Look into its economy, reliability, durability and simplicity—those are the four cardinal points. If you prefer, write the home office for complete information.

INTERNATIONAL HARVESTER COMPANY OF AMERICA
(INCORPORATED)
CHICAGO, U. S. A.

THE A. C. ANDREW MUSIC CO.,

Headquarters for Musical Goods of every description, Standard and Popular Sheet Music, Talking Machines and Records. High Grade Pianos for cash, exchange, or on easy payments.

804 and 806 Main St., Willimantic, Conn.

THE PLIMPTON MFG. CO.,

Envelope and Blank Book Manufacturers, Printers and Engravers,
HARTFORD, CONN.

OPENED FEBRUARY 21, 1887.

The Hooker House,

\$2.50 and \$3.00 per day.

S. C. HOOKER, Prop., Willimantic, Conn.

To Commercial Travellers:

**WHERE IS ONE OF THE
BEST HOTELS?**

Go to the **HOOKEER HOUSE**
then judge for yourself.

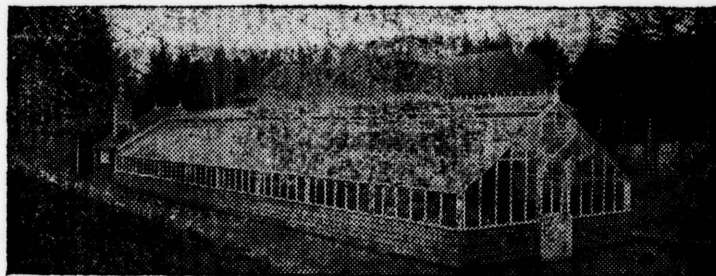
John C. North,
Insurance Specialist,
NEW HAVEN, CONN.

We are equipped to care for insurance of all kinds. After many years of experience (Established 1843) can guarantee to cover you right. Our "Full Armor" proposition is worth your consideration. It leaves no loop holes. **Advice Free.**

Write or telephone.

The compass always directs you **NORTH**

Please mention The Lookout when writing to advertisers.



GREENHOUSES

Our business is manufacturing and building greenhouses—and their equipment—nothing else.

Greenhouses for every conceivable growing purpose.

We erected those at the Storrs Agricultural College.

If interested, send for Private Greenhouse Book, or our literature on commercial houses.

LORD & BURNHAM COMPANY,

1133 BROADWAY, NEW YORK.

BARNEY & BERRY SKATES

CHRISTMAS BUYING always includes Skates.

They are the logical Holiday Gift and aid, more than anything else, in making the Winter Season enjoyable.

Millions of pairs of Barney & Berry Skates are serving that purpose and we are constantly striving to maintain and improve —

“The Quality that made
the name famous”.



Consult your dealer early. Send for our FREE CATALOG.

Barney & Berry, 237 Broad Street,
Springfield, Mass.

THE LOOKOUT

Your Wants in the

JEWELRY

LINE WILL RECEIVE PROMPT
ATTENTION AT

J. C. TRACY'S

No. 688 Main Street, WILLIMANTIC.

Dr. HERBERT E. F. TIESING,

Surgeon Dentist,

Shea Block, Willimantic.

GASOLENE ENGINES.

Don't buy one until you have seen the
line of engines I have to offer.

Herbert T. Clark, 104 Main St., Willimantic.

Clothing of Merit

Stein Bloch are Leaders.

*Suits, Overcoats, Rain Coats,
Lamson & Hubbard Hats, Eagle Shirts.
Wright & Ditson Sweaters.
Full line of Neckwear.*

H. L. HUNT & CO.

W. L. DOUGLAS

and the

RALSTON SHOES

Sold in Willimantic by

W. N. POTTER, No. 2 Union Street.

Martin's Studio,

23 CHURCH ST.,

Willimantic, Conn.

Ground Floor. Sittings Day or Evening.

Artistic Photography

in UP-TO-DATE STYLES.

Framing Department Connected.

ALSO COMPLETE LINE OF
PHOTOGRAPHIC SUPPLIES.

Please mention The Lookout when writing to advertisers.

HENRY FRYER, Merchant Tailor.

Full line of Foreign and
Domestic Woolens.

Latest Styles and most Fashionable
Designs,

672 Main Street, Willimantic, Conn.

Fall Fashions in FOOTWEAR

The Union Shoe Co.,

CHAS. F. RISEDORF, Treasurer,
WILLIMANTIC, CONN.

OUR SPECIALTIES:

"WALK OVER" and "QUEEN QUALITY"

**BRICK & SULLIVAN,
BOOTS & SHOES...**

782 Main Street, Willimantic, Conn.

JORDAN HARDWARE CO.

Builders and General Hardware

Mechanical and Agricultural Tools and
Cutlery of every description.

Call and inspect our line.

664 Main Street, Willimantic.

SAMUEL CHESBRO

APOTHECARY.

Huyler's Candies, Perfumes, Cigars,
and everything in the Drug line.

S. CHESBRO. WILLIMANTIC, CONN.

J. C. Lincoln,

Furniture, Carpets, Stoves,

Crockery, Wall Paper,

Curtains, Bedding, Etc.

Junction Main and Union Sts.,

WILLIMANTIC, CONN.

DRY GOODS and GROCERIES

OUR MOTTO:

To give our customers the very
choicest goods and to make the
prices as low as consistent with
good quality.

H. V. BEEBE,

STORRS, CONN.

SCIENCE

Free
Tuition
Free
Room Rent

Board
and
Books
At Cost

THE CONNECTICUT AGRICULTURAL COLLEGE

Storrs, Connecticut

CO-EDUCATIONAL

COLLEGE COURSES, in Agriculture and Home Economics,
for Graduates of High Schools, leading to the Degree, B. S.

SUPPLEMENTARY Liberal, Practical and Scientific Courses,
in Agriculture, Horticulture, Poultry Culture, Surveying,
Draughting, Shop Work, Bookkeeping, Home Economics,
Languages, and Music, for Graduates of Common Schools,
leading to Diplomas or Certificates.

WINTER SCHOOL, Short Courses, in several of the above
subjects, for Busy People.

SUMMER SCHOOL, for Teachers and Others, devoted to
Nature and Country Life.

Illustrated Catalogue
Sent on Request



URGENT DEMAND
FOR
TRAINED AND EXPERIENCED
GRADUATES

Necessary
Furniture
Free

Prizes
and
Paid Labor

PRACTICE

Time and Opportunity to Discover One's Bent

Knowledge and Expertness Conditions of Graduation