

5-18-2021

Three Non-U.S. Perspectives on the COVID-19 Experience in Libraries

Sarah Ruslan
Yale-NUS College

Edward Junhao Lim
University of Connecticut, edward.lim@uconn.edu

Jennifer AW Stubbs
New York University Shanghai

Follow this and additional works at: https://opencommons.uconn.edu/libr_pres



Part of the [Information Literacy Commons](#)

Recommended Citation

Ruslan, Sarah; Lim, Edward Junhao; and Stubbs, Jennifer AW, "Three Non-U.S. Perspectives on the COVID-19 Experience in Libraries" (2021). *UConn Library Presentations*. 58.
https://opencommons.uconn.edu/libr_pres/58

Three **Non-US Perspectives** on the COVID-19 Experience in Libraries

bit.ly/3-non-us-perspectives

[#criticalpedagogysymposium](#)



For the 2021 Critical Pedagogy Symposium (May 18, 11:00am – 12:30pm Eastern Standard Time)

This presentation is free to use under [CC-BY-NC 4.0](#).



Credits

Special thanks to

- Everyone present in this session
- Symposium organizers & volunteers
- UConn Library Interlibrary Services
- Presentation template by SlidesCarnival



Agenda

- Land acknowledgements
- Introductions
- Reflective chat practice
- Three lenses
- Next steps



*

A global set of land acknowledgments?

Recognizing and respecting Native people as traditional stewards of lands.

What about territories that are not part of the discourse?



حائلو

*I am **Sarah** Ruslan*

(she/hers)

I work at Yale-NUS College Library as the Circulation Librarian, where I co-lead marketing & outreach efforts. I'm still building my brand, but you can find me on Instagram **@sarahruslan_**.



Привет! 你好

*I am **Jennifer** Stubbs*

(she/her/她/она)

I work at NYU Shanghai as the Social Sciences and Economics Librarian.

ORCID **0000-0002-6080-5703**.



Hello!

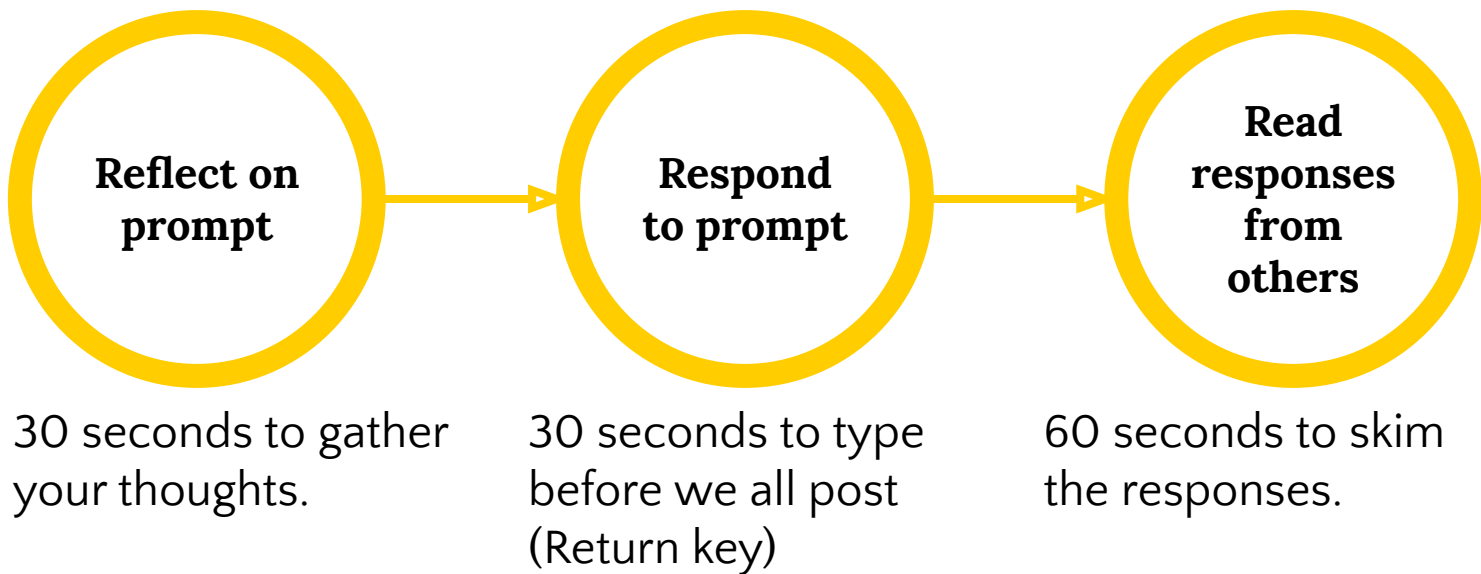
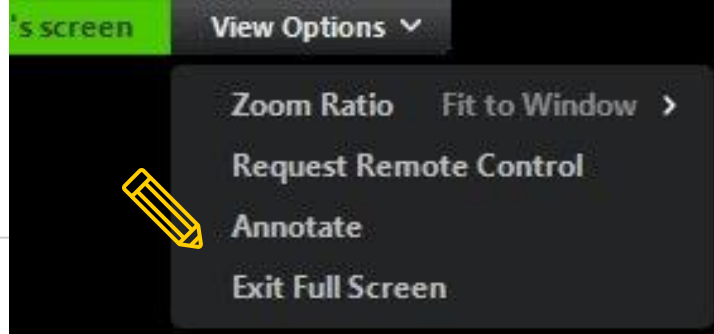
*I am **Edward** Lim*

(he/him/his)

I work at University of Connecticut as a
Business & Entrepreneurship Librarian. You
can find me on Twitter **@BarbarianEd.**



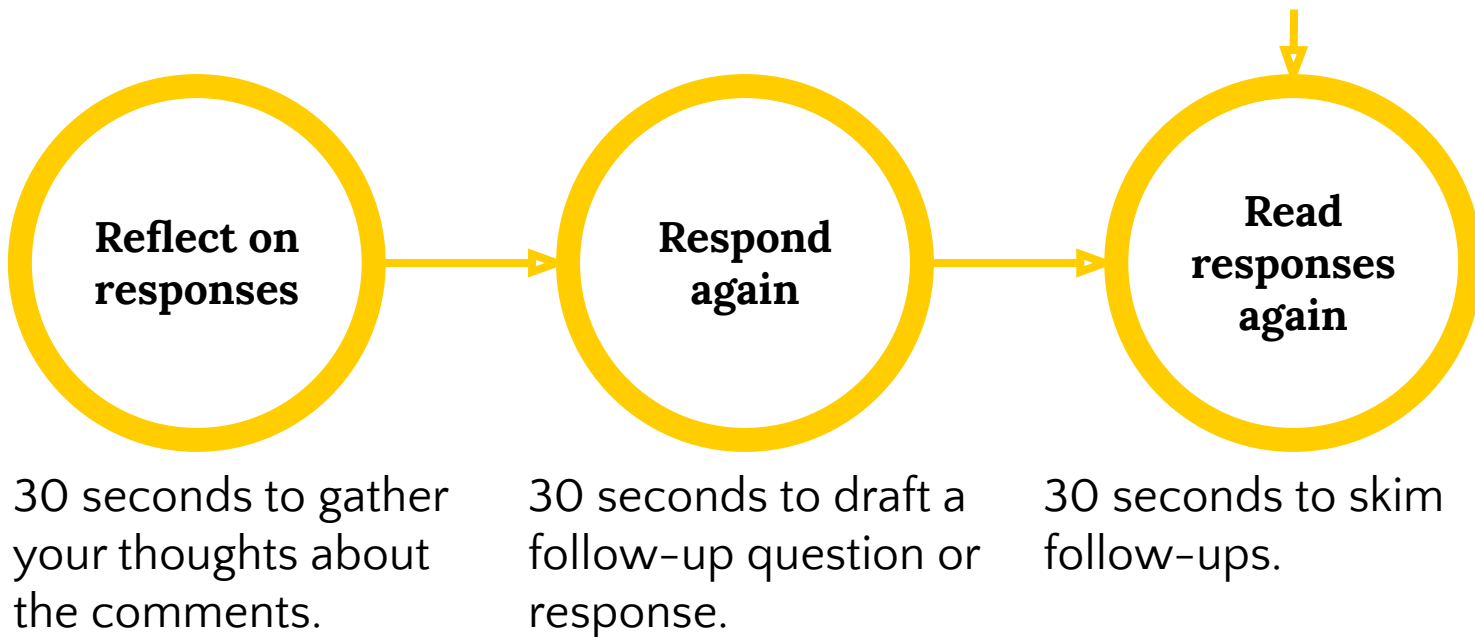
How our session will proceed (10 mins)





How our session will proceed (10 mins)

Identify a question you
want to ask for the
whole or a point to
share back.





Our ephemeral space



[etherpad.wikimedia.org
/p/3-non-us-perspectives](https://etherpad.wikimedia.org/p/3-non-us-perspectives)



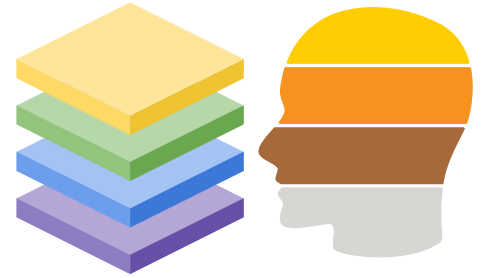
Introduce Prompts

- Intersectionality
 - Double Standards
 - Making the implicit explicit
- Missing voices in discourse (outside N.A.)



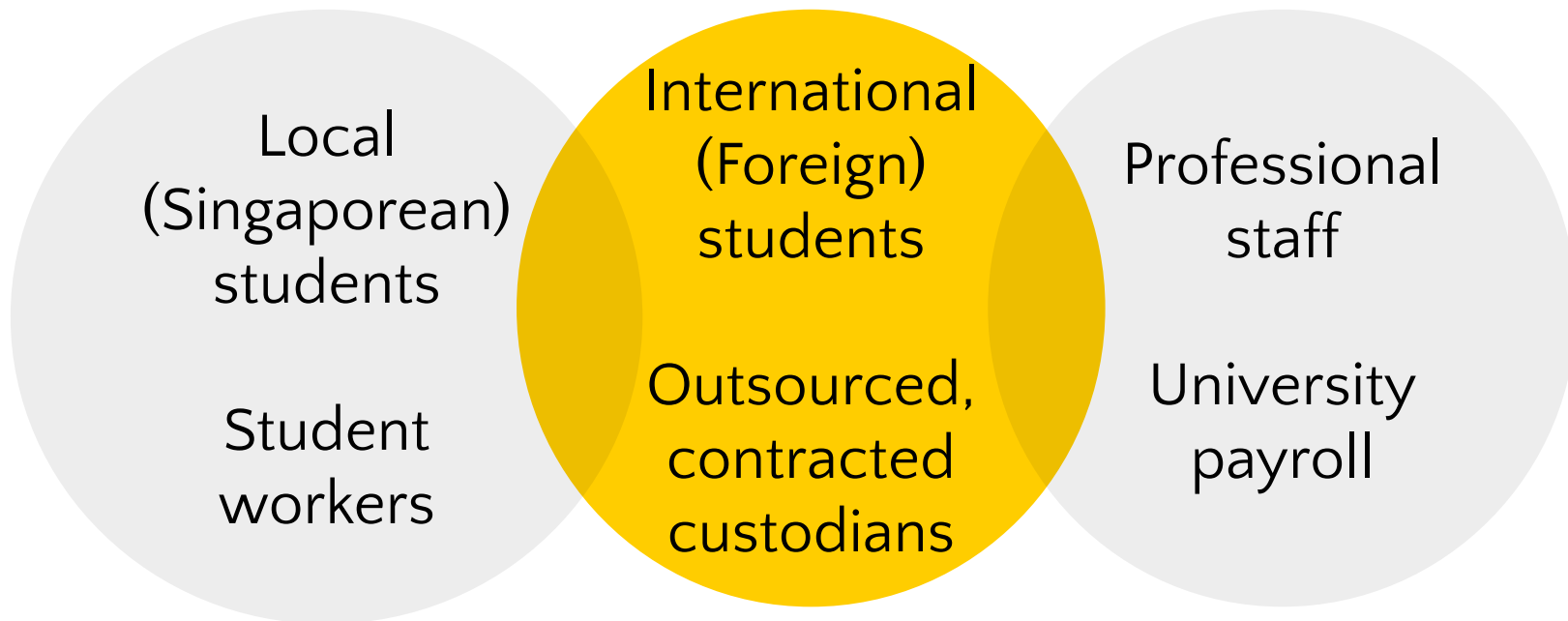
Intersectionality

Build an inclusive community by paying attention to the multiple societal and cultural identities that impact an individual's experience, especially in a crisis like COVID-19.





Intersectionality & Double Standards



Instructors and librarians should post questions and create assignments that make implicit beliefs more explicit. Then students should be challenged to examine the origins and implications of these beliefs.

“

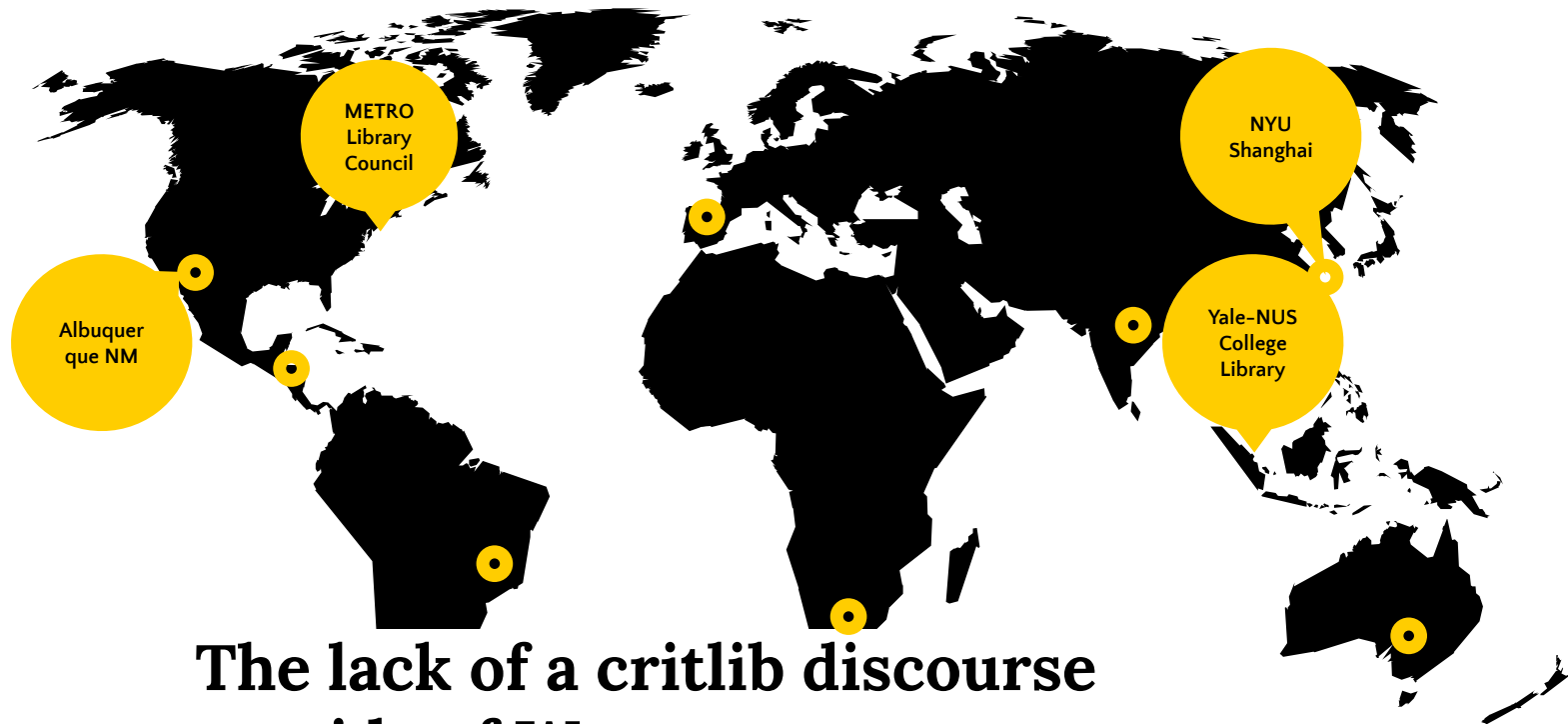
Troy A. Swanson, in *Information Is Personal: Critical Information Literacy and Personal Epistemology* (p. 274)



Reflection Time

How can we be mindful of how race, class, gender, and other individual characteristics “intersect” with one another and overlap, especially for our colleagues & students?

In our instruction & teaching, how do we make implicit beliefs more explicit?



**The lack of a critlib discourse
outside of Western
environments**



An aerial night photograph of Singapore. In the foreground, a large, dense display of purple and blue lights in a park area forms the words 'REPEAL S11A' in a stylized font. A large, dark umbrella is visible in the lower center. The background shows the city skyline with various skyscrapers and the Singapore Flyer in the distance.

Conducting fieldwork on LGBTQ+ issues in Singapore: A “pragmatic resistance”





Reflection Time

What sections in your communities haven't been given a voice? What are some of the difficult conversations and topics that have been put on hold?

Think about the scholarship that you consume, share and include in your work. What methodologies can we employ to ensure a diversity of voices in the production and consumption of library scholarship?



Reflection Time



Taking Action

Curate an inclusive book display

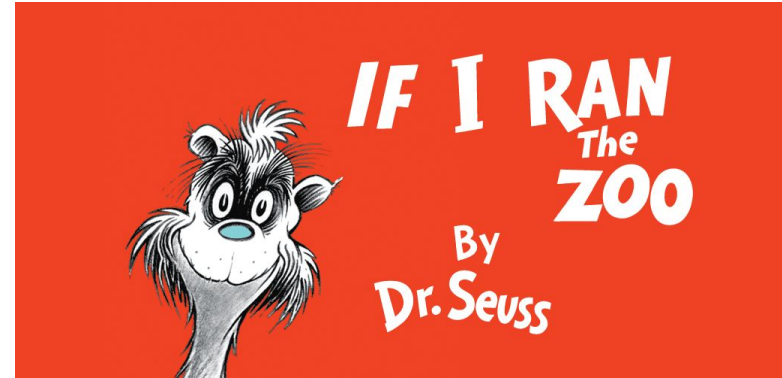
- “Blind Date with a Book”
- Inclusive reading lists






Taking Action

Propose a revision to a policy's
Double-Standard.



 Dr. Seuss' If I Ran the Zoo



Taking Action

Consume/share the social justice work already happening in

- Singapore,
- India,
- Africa,
- Central & South Americas

NYU
上海纽约大学

SHANGHAI
纽约大学

DIVERSITY
INSTITUTES
多元倡议课程

COMMITTEE ON CRITICAL INQUIRY

WHY ARE WE
TALKING ABOUT
RACE
IF IT'S NOT
REAL?



ROSLYNN ANG
*Global Perspectives on
Society Postdoctoral Fellow*



MARCEL DANIELS
*English for Academic
Purposes Lecturer*



HEATHER RUTH LEE
*Assistant Professor
of History*



PEKKA SANTTILA
Professor of Psychology

a conversation on the idea
and global impact of race

moderated by
Joyce Tan
Specialist, Diversity Initiatives

9:00-10:30PM Shanghai Time,
Wednesday, Oct 21st
in person in Room 101
streaming on Zoom



Thanks 谢谢

ترما کاسه

Any **thoughts** ?

Drop us a note

- jas58@nyu.edu
- sarah.ruslan@yale-nus.edu.sg
- edward.lim@uconn.edu