

1983

Fact Book 1983-1984

Follow this and additional works at: https://opencommons.uconn.edu/upub_factbks

Recommended Citation

"Fact Book 1983-1984" (1983). *Fact Books*. 16.
https://opencommons.uconn.edu/upub_factbks/16

The University of Connecticut

FACT BOOK



1983-84

Office of Institutional Research

THE UNIVERSITY OF CONNECTICUT
The Office of Institutional Research
Storrs, Connecticut 06268

January, 1984

The Office of Institutional Research receives many requests for statistical information, both current and historical, about the University of Connecticut. This Seventh Edition of our Fact Book is designed to meet many of the recurring requests.

If you have further questions, please contact Lois Torrence or Dottie Klein, Extension 4240. We welcome suggestions which will help us make future editions more useful to you.

TABLE OF CONTENTS

	Page
Fingertip Statistics	1
University Profile, 1983-84.	2
Health Center Profile, 1983-84	3
Board of Trustees.	4
Organizational Charts.	5-11
Map of Statewide Services & Courses Offered.	12
STUDENTS	
Enrollments:	
Undergraduate Enrollment in Each School/College	
Selected Years, Fall 1960 to Fall 1983	13
Undergraduate Enrollment and Percent in Each School/College	
Selected Years, Fall 1960 to 1983.	14
Graduate and Professional Enrollment in Each School/College	
Selected Years, Fall 1960 to Fall 1983	15
Comparison of Fall 1982 and Fall 1983 Enrollment	16-17
Map of Currently Enrolled Students by Residence in Connecticut, Fall 1983.	18
Undergraduate Student Enrollment by Residence, Fall 1982 and Fall 1983	19
Minority Student Enrollment, Fall 1983	20
Undergraduate Enrollment by School/College, by Minority, and by Male/Female, Fall 1983	21
Undergraduate Enrollment by Major, by Class, and by Full-time/Part-time, Fall 1983	22-24
Regional Campuses Enrollment, by School, Fall Semesters 1977 to 1983	25-26
Summer Session Enrollment, Selected Years 1975-1983.	27
Transfer Students, Selected Years, Fall 1975-1983.	28
Age Distribution, Undergraduate Students, Fall 1983.	29
Applied, Admitted, and Deposits Paid, Selected Years, 1975-1983.	30
Profile of Entering Freshmen Classes:	
Entering Freshmen Profile, Fall 1983	31
Mean SAT Scores & Class Rankings, Entering Freshmen, Selected Years, 1975-1983	32-33
Retention of Entering Freshmen:	
By Location at Entrance.	34
Degrees Conferred:	
By Type of Degree, 1982-1983	35
Degrees Conferred by School/College, and by Type of Degree, Selected Years, 1970-1983.	36-38
ALUMNI	
Alumni Geographic Distribution, as of June 30, 1983.	39
Map of Alumni Distribution in Connecticut, as of November 1, 1983.	40
Alumni and Alumni Support, 1963-1983	41
Alumni Survey - Demographic and General Questions - 1983	42
Alumni Survey - Employment - 1983.	43
Alumni Survey - 1977 to 1983	44-47
COURSES	
Course Enrollment Matrix, Fall 1983	48-52
Summary - Undergraduate Student Course Enrollments, Fall 1983.	53
STAFF	
Staff Census, Fall 1983.	54
Minority Staff Census, Full-time Employees by Sex and Ethnicity, Fall 1981	55
Full-time Teaching Faculty, by School/College, Selected Years, Fall 1960 to Fall 1983.	56
Tenure Status of Full-time Teaching Faculty, by School/College Affiliation, Selected Years, 1970-71 to 1983-84	57
Departmental Affiliation, Sex, and Tenure Status of the Full-time Teaching Faculty, 1983-84.	58-59
Tenure Status of the Full-time Teaching Faculty, by Rank, Selected Years, 1970-71 to 1983-84	60
Full-time Teaching Faculty by Rank and Sex, with Percentage Distribution among Ranks, 1960-61 to 1983-84	61
Mean Salaries for Five Ranks of the Full-time Teaching Faculty, 1960-61 and 1963-64 to 1983-84	62
Distribution of Members of the Full-time Teaching Faculty by Sex, Age, and Years of Service	63
Age of Retirement of the Tenured Faculty in All Functions, 1973 to 1983.	64
SPACE	
Physical Facilities by Location, Fall 1983	65
Space Distribution by Type of Structure, Fall 1983	66
Space Distribution by Functional Use, Storrs Campus, Fall 1983	67
Space Distribution by Functional Use, Regional Campuses, Professional Schools, and Institutes, Fall 1983	68
Assignable Square Feet, Fall 1983.	69
Health Center Facilities Data, Fall 1983	70
FINANCE	
Balance Sheet (excluding Health Center), June 30, 1983	71
Health Center Balance Sheet, June 30, 1983	72
Statement of Current Funds Revenues, Expenditures and Other Changes (excluding Health Center).	73
Health Center Statement of Current Funds Revenues, Expenditures and Transfers.	74
Summary of Charges in Investment in Plant for the Year Ended June 30, 1983	75
Capital Budget Recommendations 1984-85 (excluding Health Center)	76
Health Center 1984-85 Capital Budget Recommendations	77
Awards and Donations, July 1, 1982 to June 30, 1983.	78
Budget Summary - All Funds (excluding Health Center)	79
Budget Summary - General and Tuition Funds (excluding Health Center)	80
Health Center Program Budget Summary - All Funds	81
Health Center Program Budget Summary - General Fund & Tuition Fund	82
Student Financial Aid, 1980-83	83
Fees (excluding Health Center), Fall Semester 1983	84
Health Center Annual Fees, 1983-84	85

The University of Connecticut
FINANCIAL STATISTICS
STORRS, MEDICAL CAMPUSES, AND PROFESSIONAL SCHOOLS

	Fall, 1960	Fall, 1970	Fall, 1980	Fall, 1982	Fall, 1983
ENROLLMENT					
Total Students	10,960	19,811	21,874	22,800	22,904
Full-time Students:					
Undergraduate	7,990	14,011	13,549	13,698	13,567
Graduate	902	2,291	2,348	2,196	2,380
Professional (Law)	304	377	426	425	442
Non-Degree--Undergraduate	405	42	18	65	57
Graduate	316	39	19	24	36
Part-time Students:					
Undergraduate	---	334	863	1,146	1,232
Graduate	413	1,634	2,157	2,549	2,501
Professional (Law)	---	161	120	256	246
Non-Degree--Undergraduate	246	717	697	1,261	1,343
Graduate	392	205	1,377	1,180	1,120
By School or College (excludes non-degree):					
Hatcliffe Hicks	112	107	133	90	75
Agriculture & Natural Resources	295	454	1,075	926	863
Allied Health	221	400	435	431	442
Business	1,260	1,851	3,522	3,454	3,389
Education (includes 6th year)	747	1,793	1,376	1,297	1,223
Engineering	1,392	1,678	2,139	2,401	2,341
Family Studies	264	622	464	424	446
Fine Arts	---	591	709	704	712
Liberal Arts & Sciences (including Biomedical)	4,152	9,615	7,301	7,911	7,974
Nursing	347	438	593	641	663
Pharmacy	428	436	535	439	445
Law	304	538	646	681	688
Social Work	47	285	470	463	485
General Studies	---	---	165	408	480
By Location (degree and non-degree students):					
Storrs	8,416	15,133	16,696	16,057	16,450
Regional Campuses:					
Avery Point	---	534	502	611	629
Hartford	788	1,135	541	1,181	1,016
Stamford	510	599	658	1,194	1,233
Torrington	137	326	171	259	217
Waterbury	594	783	501	617	607
Hartford: Law	304	538	646	681	688
Social Work	128	285	476	461	477
MBA	91	213	493	516	457
Stamford - MBA	---	265	415	487	436
Danbury -- MBA	---	---	105	209	194
Health Center - Biomedical	---	---	130	135	150
DEGREES AWARDED					
Bachelors	1,272	2,397	2,525	2,878	2,889
Masters	318	848	1,098	1,051	1,087
Doctoral	53	149	194	168	159
Law	63	97	210	179	187
STAFF					
Full-time Teaching Faculty	566	1,202	1,174	1,141	1,133
Full-time Teaching Equivalent	N/A	1,216	1,281	1,250	N/A
SPACE					
Assignable Square Feet - Storrs	1,335,000	2,935,951	4,048,681	4,051,296	4,053,589
Assignable Square Feet for Classroom & Lab Instruction - Storrs	291,200	317,713	368,666	362,721	355,838
FINANCE					
Total Current Funds Revenue for fiscal year ended 6/30:	\$16,955,824	\$65,098,004	\$132,962,397	\$158,654,211	\$175,116,244
From State Appropriations	8,163,304	34,131,975	69,442,575	74,662,289	79,787,851
From All Other	8,792,520	30,966,029	63,539,422	83,991,922	95,328,393
Total Current Funds Expenditure for fiscal year ended 6/30:	16,256,701	60,740,467	132,600,537	155,351,997	172,564,961
Education and General	9,784,688	47,871,437	114,650,620	136,227,056	152,831,380
All Other	6,472,013	12,869,030	17,949,717	19,124,941	19,733,581

HEALTH CENTER

	Fall, 1960	Fall, 1970	Fall, 1980	Fall, 1982	Fall, 1983
ENROLLMENT					
Dental Medicine	---	46	193	176	177
Medicine	---	95	340	340	347
Dental Residents	---	---	34	33	32
Medical Interns, Residents	---	---	300	279	244
DEGREES AWARDED					
Dental Medicine	---	---	43	44	41
Medicine	---	---	84	91	84
STAFF					
Full-time Teaching Faculty	---	118	300	336	336
FINANCE					
Total Current Funds Revenue for fiscal year ended 6/30:	\$---	\$12,713,093	\$75,483,340	\$109,501,990	\$124,481,194
From State Appropriations	---	6,540,823	28,660,353	34,337,201	36,497,125
All Other	---	6,172,270	46,822,987	75,164,789	87,984,069
Total Current Funds Expenditure for fiscal year ended 6/30:	---	\$12,165,413	\$62,974,849	\$107,258,851	\$120,335,474
Education and General	---	6,968,762	43,780,123	53,545,464	57,140,382
All Other	---	5,196,651	19,194,726	53,713,387	63,195,112

OIR/DLK/eh

December, 1983

*Includes Undergraduate, graduate, full-time and part-time students.

The University of Connecticut
(excluding Health Center)
Profile
1983-84

Academic Structure: We have 14 Schools and Colleges with 59 Academic Departments offering 16 different kinds of degrees.

Academic Fields: Undergraduates may major in 103 different fields. At the graduate level, students may earn Master's Degrees in 67 areas, and may choose from among 66 specialities for the Ph.D degree.

Alumni: As of June 30, 1983, there are 61,315 alumni, with 63% of them living in Connecticut.

Admissions: As of October 1, 1983, 12,763 undergraduate applications for admission were received, 8,867 persons were admitted, and there were 3,437 paid deposits.

Residence Halls: We have 28 undergraduate and 3 graduate residences designed to accommodate 9,006 students.

Employees: As of 11/1/83 we have 4,390 full-time employees; 1,962 women; 2,428 men; 1,208 faculty; 1,676 classified; 446 graduate assistants; and 1,060 other professionals.

Enrollment: For Fall, 1983 there are 12,989 undergraduate and graduate students enrolled on the Storrs Campus who are Connecticut residents, and 2,299 who are non-residents.

There are 9,475 students living on campus, and 5,813 commuting.

Extended and Continuing Education: During 1982-83, 14,407 people enrolled in statewide credit courses. Non-credit programs enrolled 9,480 in 498 course sections, administered in 29 Connecticut communities.

Fees: In 1983-84, it cost an average undergraduate Connecticut student \$1,467 in tuition and fees, and \$2,346 for room and board to attend the University for one year.

Financial Aid: In 1982-83, approximately 11,000 students received \$29,076,436 through various programs of financial assistance.

This total amount was composed of \$18,124,935 in educational loans, \$2,847,640 in various forms of student employment, and \$8,103,661 in grants and scholarships.

Library: As of 6/30/83, the University Library in Storrs has 1,450,072 volumes, 294,540 assignable square feet, and tables and chairs to accommodate 3,000 students. At all campus locations, University libraries have a total of 1,969,093 volumes.

Facilities: As of Fall, 1983 we have 430 usable structures on the Storrs campus, with a total of 4,053,589 assignable square feet of floor space.

The Storrs campus has 23 miles of roads; it has 92 miles of sidewalk to sand, 400 acres of lawn to mow, and over 50 acres of parking lots to serve 10,532 registered cars.

The University of Connecticut
Health Center Profile
1983-84

Enrollment	Medical	Dental	Other¹	Total
Undergraduate	347	177		522
Graduate:				
Ph.D. Candidates			130 ²	130
Master of Community Health			61	61
Residents, Interns	244	32		311
Certificates (Postgrads.)		32		32
Master of Dental Science		(14) ³		0
Total	691	241	191	1,056
¹ Enrolled in the University's Graduate Program in Biomedical Sciences.				
² Includes 15 students pursuing doctoral degrees in Medical Sociology and Medical Anthropology.				
³ Includes fourteen students who are not counted in the total because they are already included above.				
Allied Health	Medical	Dental		Total
Professions Education				
(Students in joint programs with Tunxis Comm. College)				
Dental Assistants		38		38
Dental Hygienists		57		57
(Students in joint programs with Quinnipiac College in Hamden)				
Nuclear Medicine Technologists	7			7
Total	7	95		102
Continuing Education	Medical	Dental		
Courses	1	6		
Credit Hours	5	55		
Persons Attending	350	163		
Degrees Awarded (for the years 1972-83)	Medical	Dental		Total
	750	364		1,114
Patient Care	Admissions		Patient Visits	
Ambulatory, Farmington			138,508	
Ambulatory, Hartford			32,880	
University Hospital including newborns	7,692		34,991	
Research	Government	Non-Government		Total
	\$15,790,000	\$5,840,000		\$21,630,000
Employees				Total
Professional:				
Executive, Administrative, Managerial*				54
Instruction/Research				497
Specialist/Support				764
Clerical Employees (classified employees)				815
Resident Dentists, Physicians and Post-Doctoral Fellows				280
Total				2,410
*Managerial redefined to include University Assistant Directors and Educational Directors.				
Facilities				
Acres: 151.24				
		Gross Square Feet	Assignable Square Feet	
Main Complex		1,150,000	580,960	
Outer Buildings		51,280	47,237	
Total		1,201,280	628,197	

OIR/DLK/dlk
December, 1983

Source: The University of Connecticut Health Center

The University of Connecticut
Board of Trustees
1983-84

MEMBERS

The Honorable William A. O'Neill, Governor of the
State of Connecticut, President ex officio

H. Earl Waterman, Commissioner of Agriculture and
Natural Resources, member ex officio

Gerald N. Tirozzi, Commissioner of Education, member
ex officio

Appointed by the Governor

Otha N. Brown, Jr., Secretary
Andrew J. Canzonetti, Chairman
Kevin V. Dowling
Albert J. Kleban
Louise B. Kronholm
Gerard J. Lawrence
Jack S. Opinsky
Frank D. Rich, Jr., Vice-Chairman
Theodore P. Rossi
Irving R. Saslow
Charles Stroh
Francis M. White

Elected by Alumni
Elizabeth A. Bradlau
Joseph J. Crisco, Jr.

Elected by Students
Donald A. Cafero
Roland Richter

STANDING COMMITTEES

Budget and Finance Committee
Frank D. Rich, Jr., Chairman
Albert J. Kleban, Vice-Chairman
Joseph J. Crisco, Jr.
Roland K. Richter
Theodore P. Rossi
Francis M. White

Health Affairs Committee
Kevin V. Dowling, Chairman
Charles Stroh, Vice-Chairman
Jack S. Opinsky
Irving R. Saslow
H. Earl Waterman

Joint Conference Committee
Kevin V. Dowling
Charles Stroh
Jack S. Opinsky
Irving R. Saslow
H. Earl Waterman

Community Relations Committee
Louise B. Kronholm, Chairman
Elizabeth A. Bradlau, Vice-Chairman
Otha N. Brown, Jr.
Andrew J. Canzonetti
Kevin V. Dowling
Frank D. Rich, Jr.

Institutional Policy Committee
Otha N. Brown, Jr., Chairman
Louise B. Kronholm, Vice-Chairman
Elizabeth A. Bradlau
Donald F. Cafero
Gerard J. Lawrence
Gerald N. Tirozzi

SPECIAL COMMITTEES AND REPRESENTATIVES

TAFS Committee Representatives

Otha N. Brown, Jr.
Louise B. Kronholm
Elizabeth A. Bradlau
Donald F. Cafero
Gerard J. Lawrence
Gerald N. Tirozzi

Hospital Consortium Committee

Kevin V. Dowling
H. Earl Waterman

Board of Governors Standing Advisory Committee

Joseph J. Crisco, Jr., Representative
Otha N. Brown, Jr., Alternate

Long Range Facilities Plan Committee

Frank D. Rich, Jr.

**Coordinating Council (University of Connecticut
& Ct. State Colleges) Representatives**

Otha N. Brown, Jr.
Andrew J. Canzonetti
Frank D. Rich, Jr.

Committee on Herds

Charles Stroh
H. Earl Waterman

UConn Foundation Representatives

Elizabeth A. Bradlau
Louise B. Kronholm

Collective Bargaining Committee

Officers of the Board

University Medals Committee

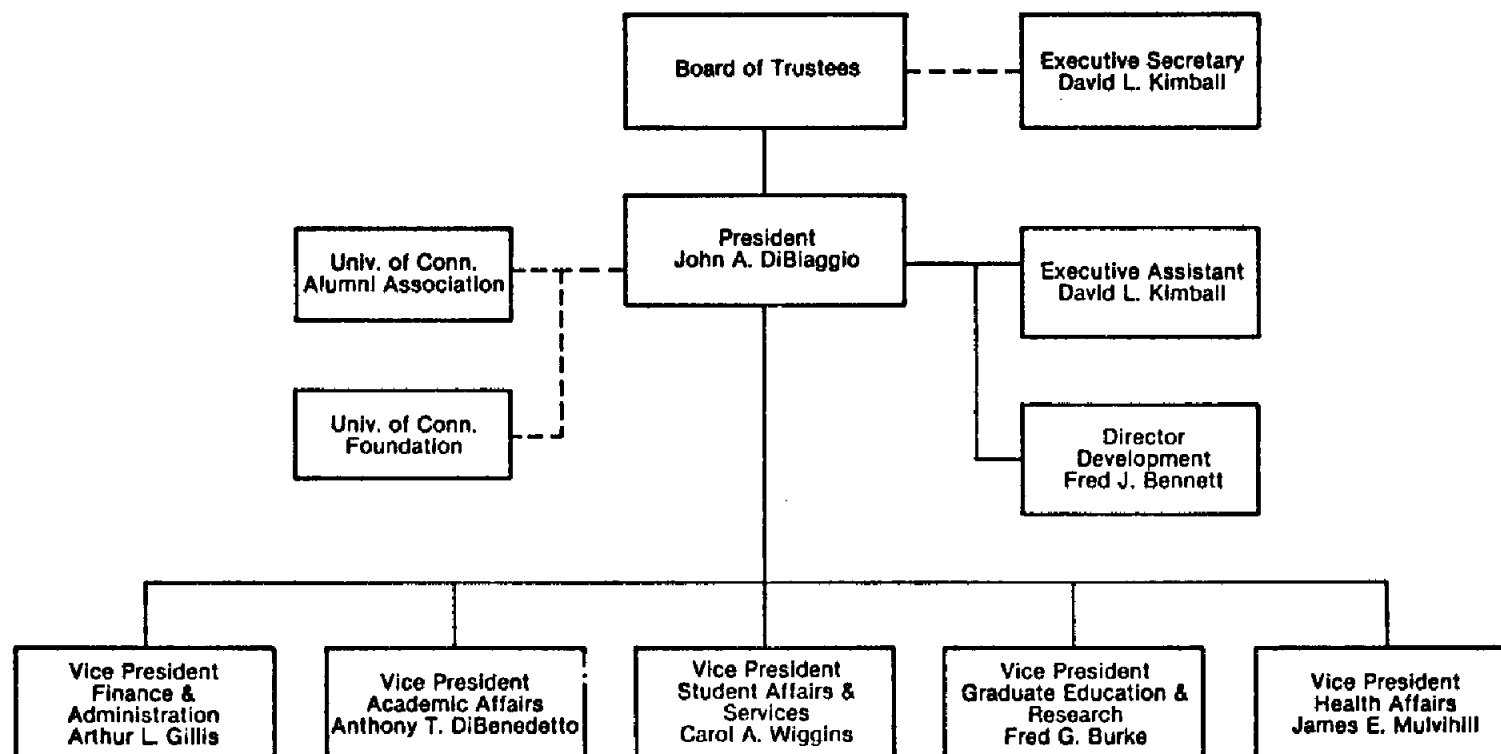
Andrew J. Canzonetti, Chairman
Elizabeth A. Bradlau
Otha N. Brown, Jr., ex officio
Kevin V. Dowling, ex officio
Louise B. Kronholm, ex officio
Irving R. Saslow

Honorary Degrees Committee

Otha N. Brown, Jr.
Andrew J. Canzonetti
Joseph J. Crisco, Jr.
Gerald N. Tirozzi

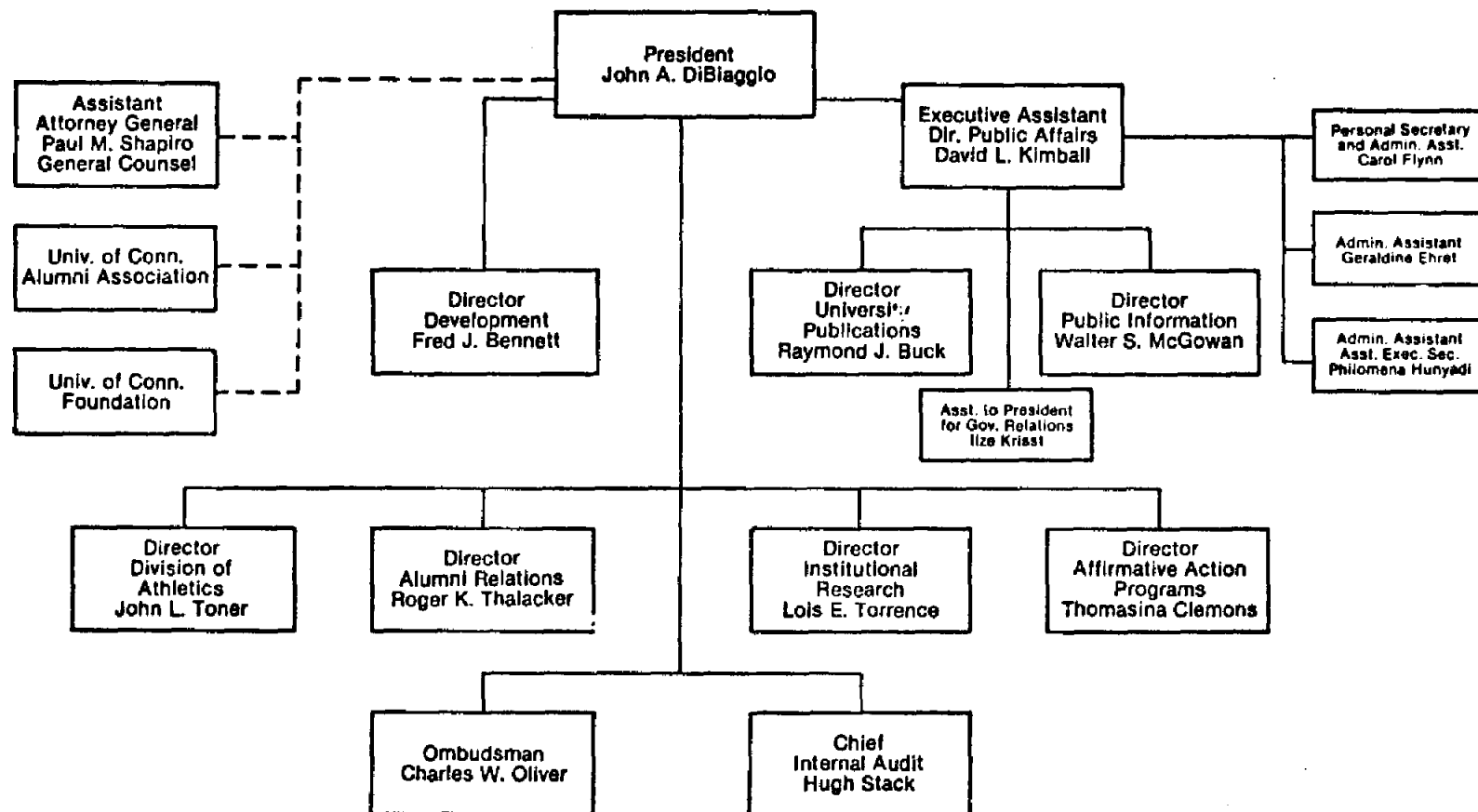
UCFPI Board of Directors

Andrew J. Canzonetti, ex officio
Frank D. Rich, ex officio

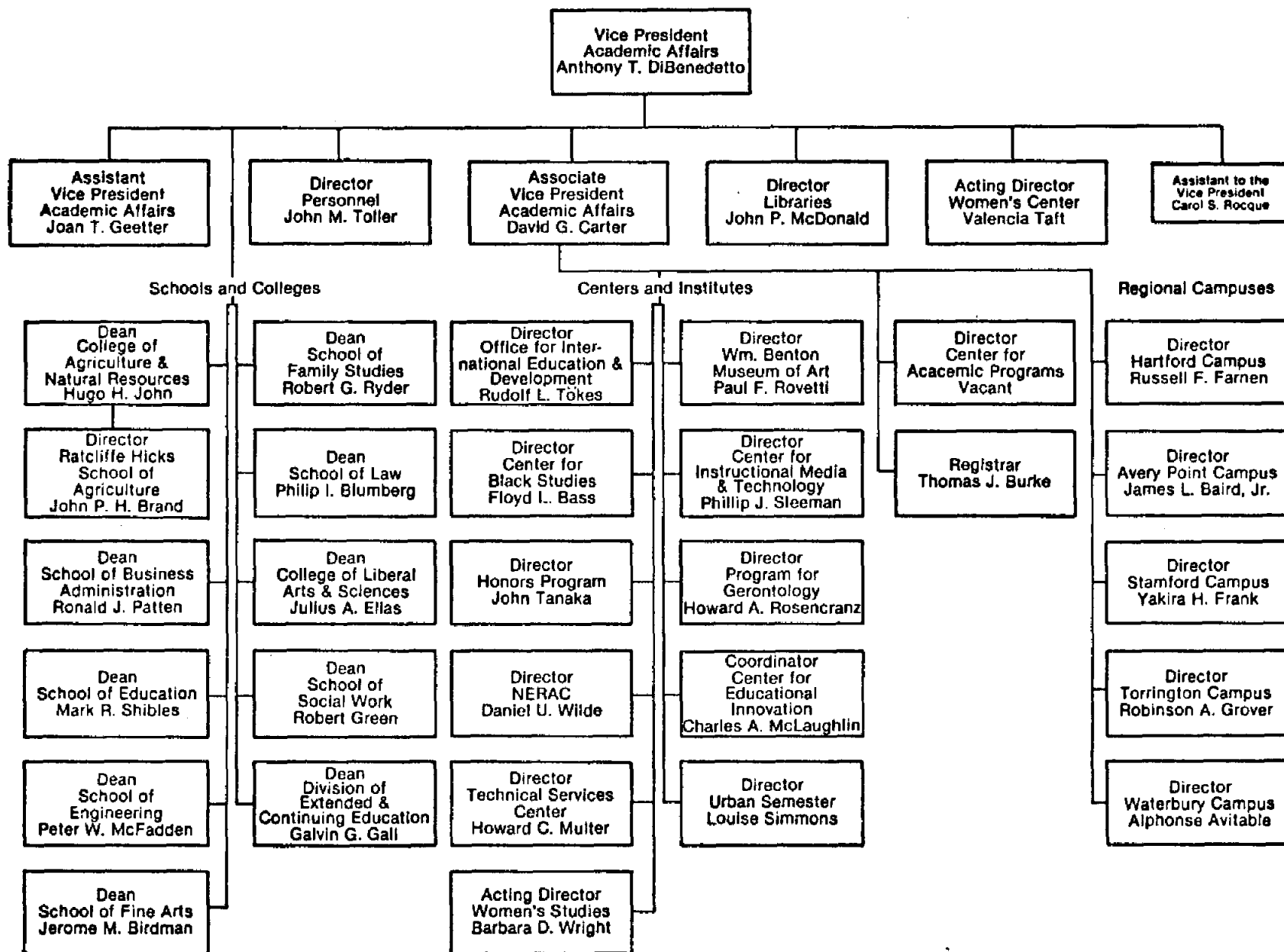


**The University of Connecticut
Organizational Chart
Central Administration
as of October, 1983**

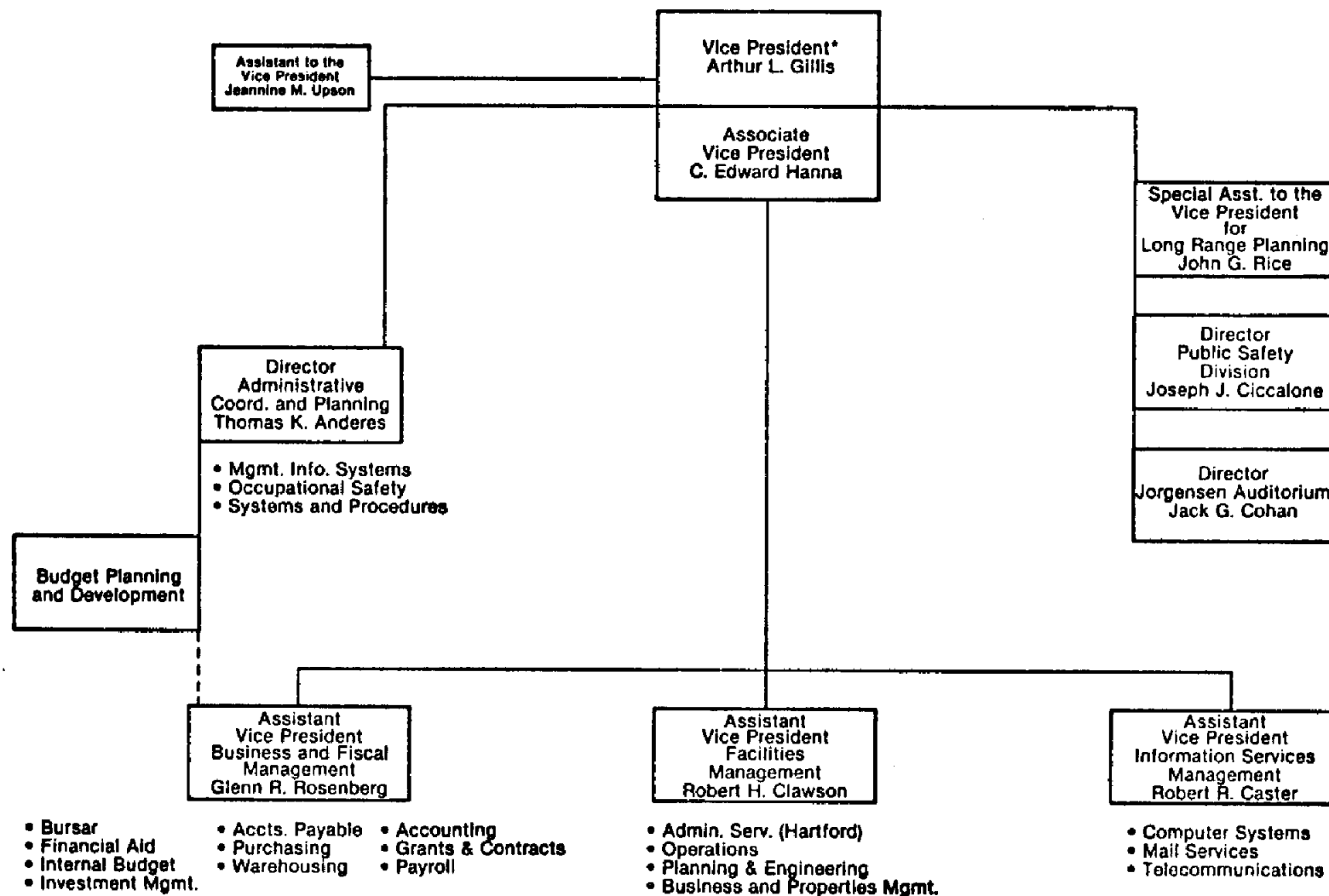




**The University of Connecticut
Organizational Chart
Office of the President
as of October, 1983**

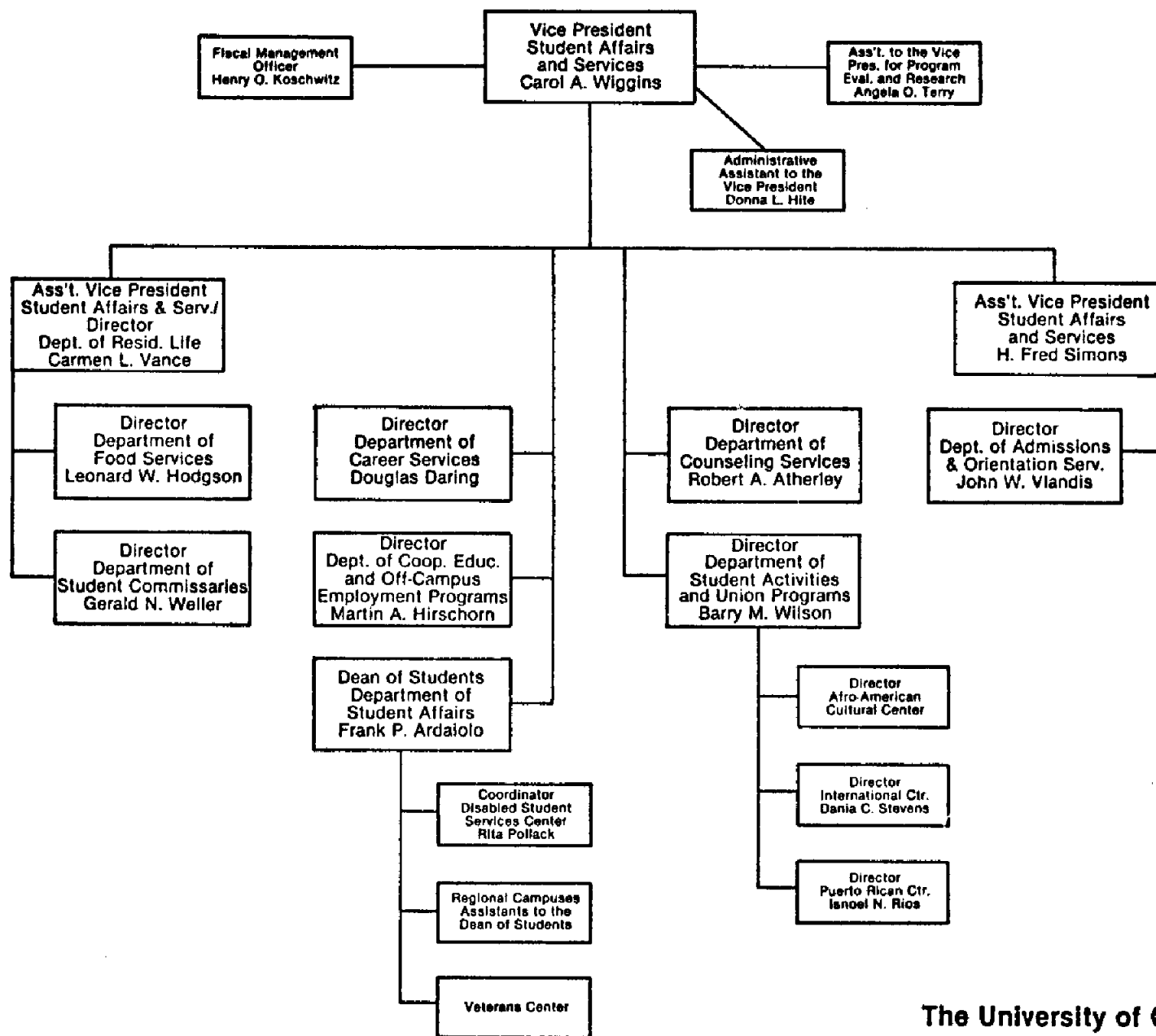


**The University of Connecticut
Organizational Chart
Academic Affairs
as of October, 1983**

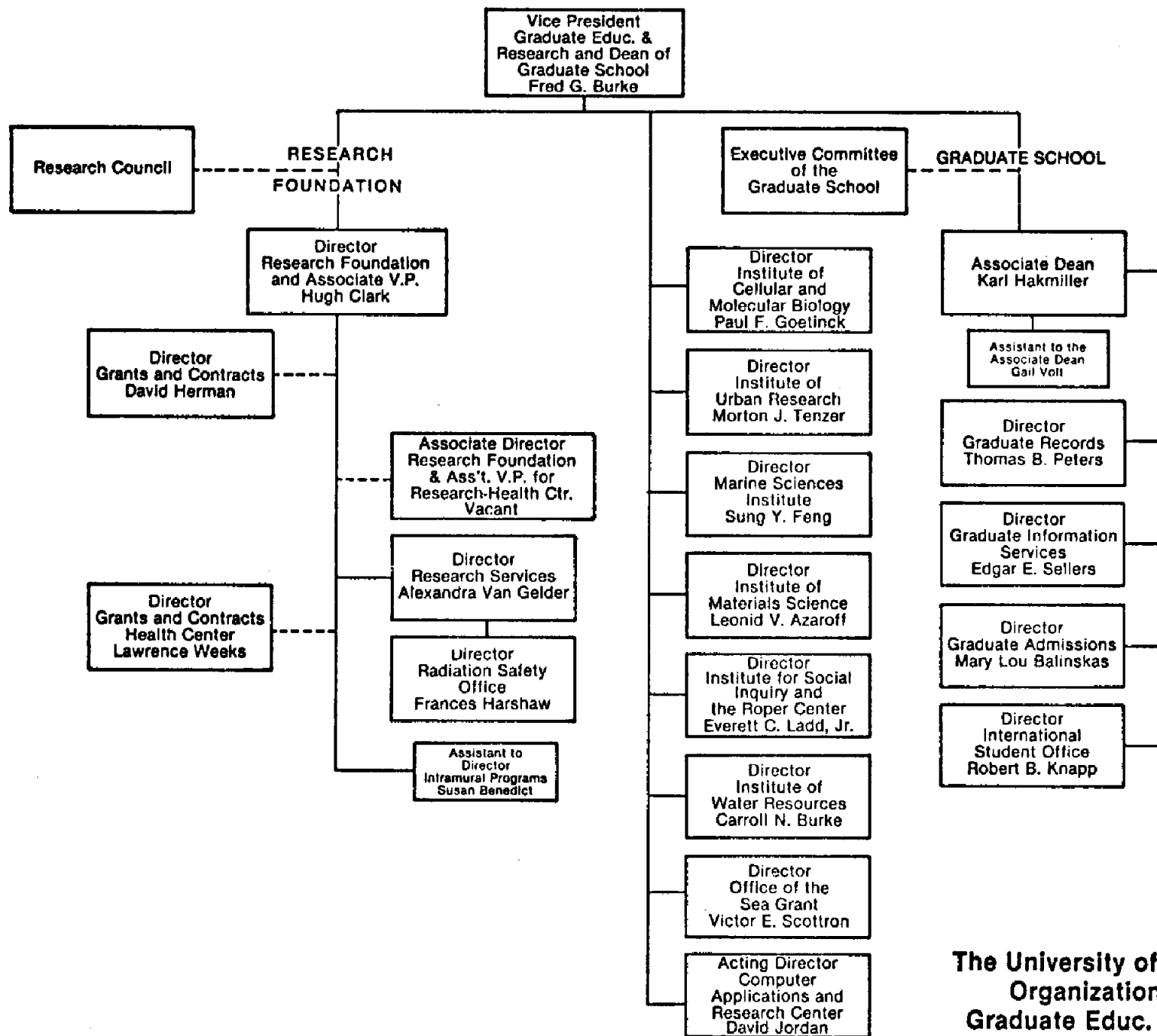


*The Vice President also provides budget, planning, coordination and analysis support to those operations reporting to the Office of the President.

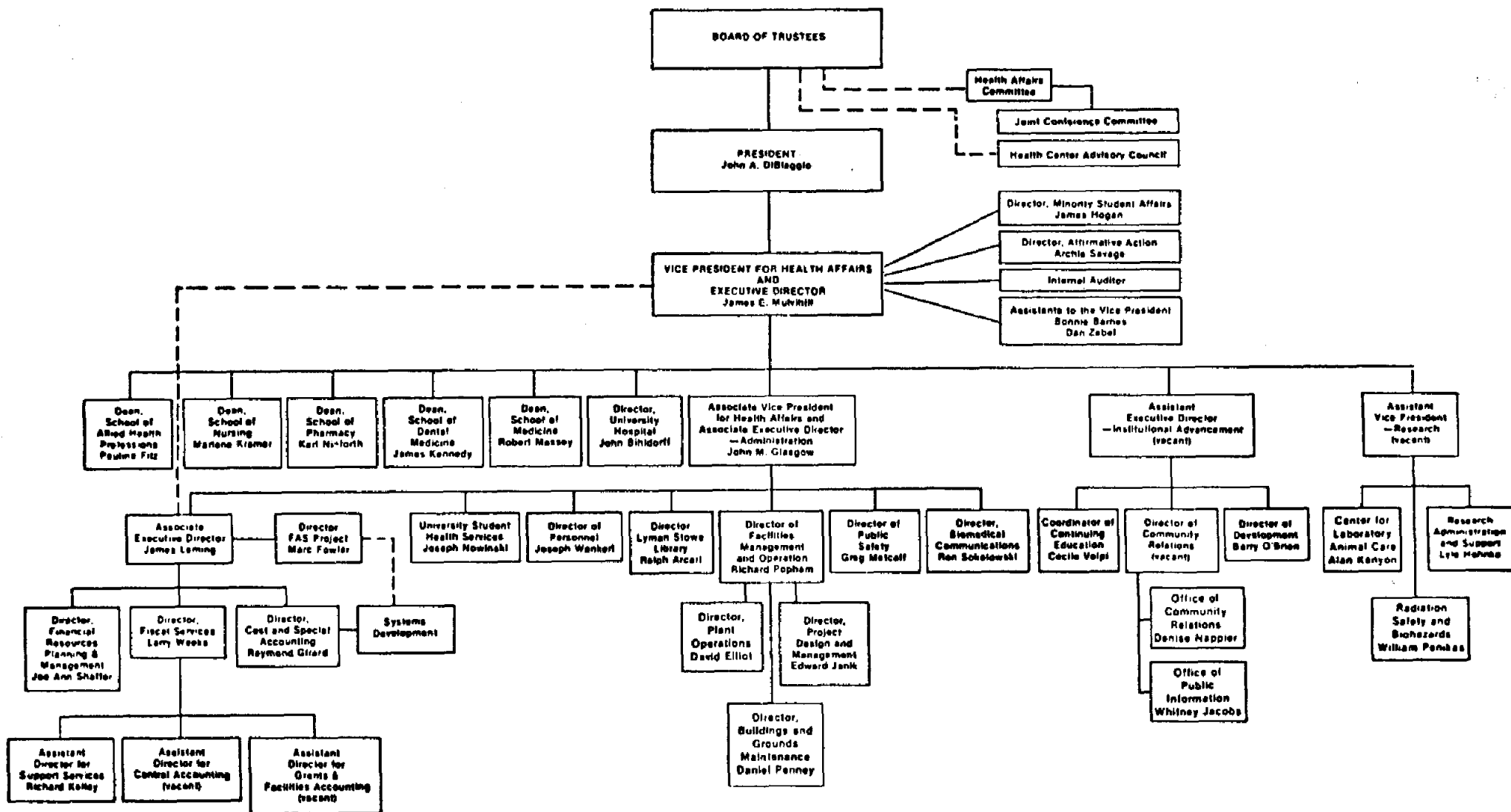
**The University of Connecticut
Organizational Chart
Finance & Administration
as of October, 1983**



**The University of Connecticut
Organizational Chart
Student Affairs and Services
as of October, 1983**

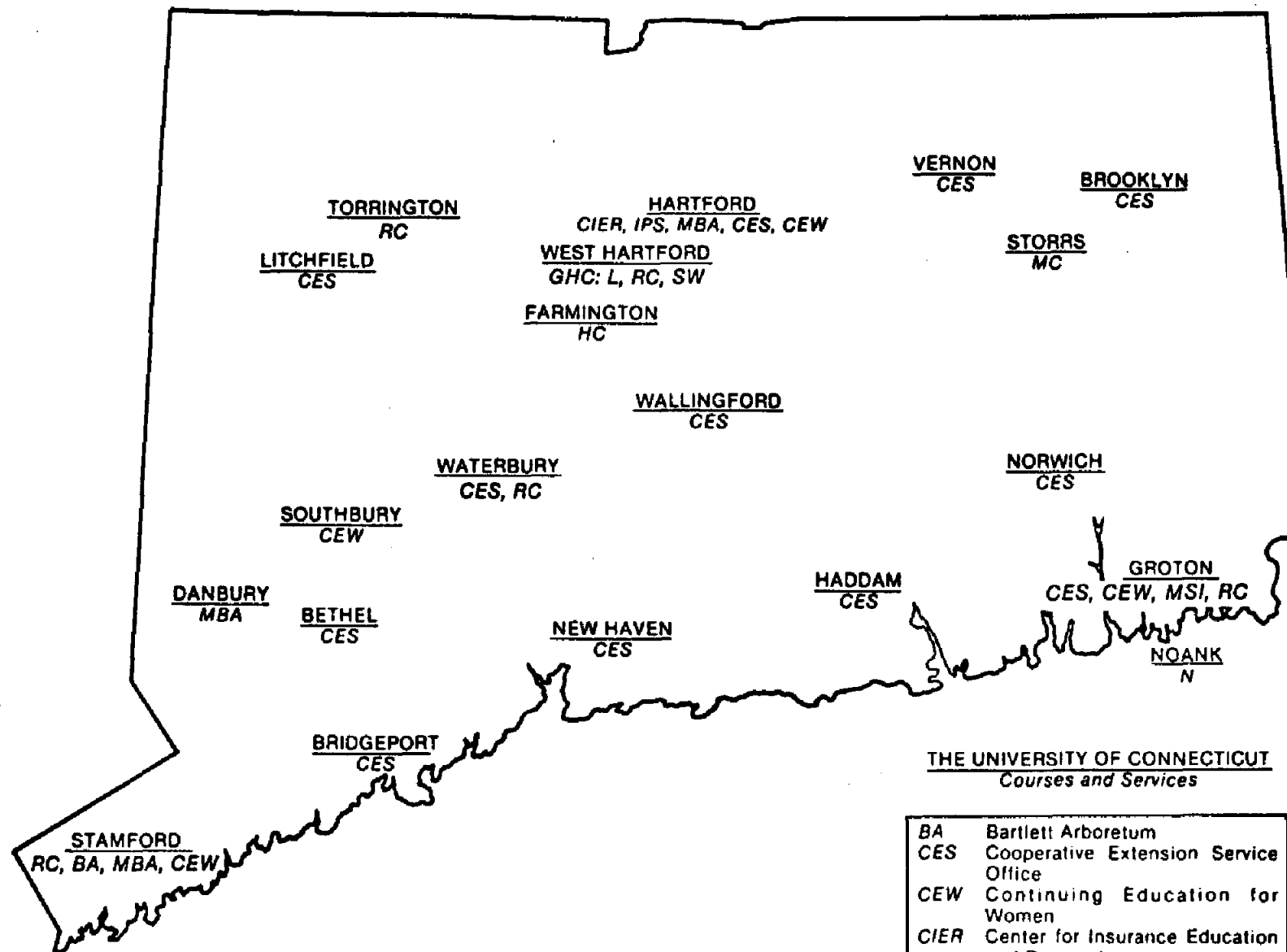


**The University of Connecticut
Organizational Chart
Graduate Educ. & Research
as of October, 1983**



**University of Connecticut Health Center
Organizational Chart
October, 1983**





The following programs are not shown on the map since their locations frequently change from semester to semester:

Continuing Education Credit Extension locations for Fall, 1983: Enfield, Farmington, Groton, Hartford/West Hartford, New London, Stamford, Storrs, Torrington, Waterbury, Wilton.

Continuing Education Non-Credit Extension locations for Fall, 1983: Cromwell, Danbury, Danielson, East Lyme, Farmington, Groton, Hamden, Hartford/West Hartford, Manchester, Meriden, Middletown, North Haven, Norwalk, Norwich, Plainville, Stamford, Storrs, Torrington, Waterbury.

STUDENTS

The University of Connecticut
Storrs and Regional Campuses
Undergraduate Enrollment in each School/College
Selected Years, Fall 1960 to Fall 1983

Storrs Campus						
School/College	1960	1970	1980	1981	1982	1983
Ratcliff Hicks	112	107	132	115	90	75
Agriculture & Natural Resources	237	314	813	740	667	605
Allied Health	---	---				
Physical Therapy	212	358	425	406	408	409
Business	926	940	2,023	2,004	1,989	2,004
Education	173	597				
Physical Education	108	182	448	344	328	352
Engineering	855	827	1,541	1,541	1,611	1,592
Family Studies	238	462	378	327	311	353
Fine Arts	---	485	536	535	526	551
Liberal Arts & Sciences	3,027	6,477	4,830	5,056	5,128	5,256
Nursing	334	381	472	460	499	535
Pharmacy	384	344	443	402	348	357
General Studies	---	---	18	33	50	51
Total	6,606	11,474	12,089	11,993	11,955	12,140

Storrs and Regional Campuses						
School/College	1960	1970	1980	1981	1982	1983
Ratcliffe Hicks	112	107	133	115	90	75
Agriculture & Natural Resources	249	382	954	912	801	699
Allied Health	---	---				
Physical Therapy	221	400	435	422	415	423
Business	1,181	1,236	2,222	2,183	2,142	2,163
Education	174	604				
Physical Education	117	200	460	359	355	376
Engineering	1,174	1,172	1,869	1,973	2,050	1,956
Family Studies	255	549	420	370	357	396
Fine Arts	---	533	629	608	595	603
Liberal Arts & Sciences	3,751	8,271	6,143	6,567	6,721	6,683
Nursing	347	438	505	505	539	570
Pharmacy	409	395	477	426	370	375
General Studies	---	---	165	279	408	480
Total	7,990	14,287	14,412	14,719	14,843	14,799

OIR/LET/dlk
December, 1983

¹Headcount (full-time plus part-time). Excludes non-degree enrollment.

The University of Connecticut
Storrs and Regional Campuses
Undergraduate Enrollment and Percent in Each School/College¹
Selected Years, Fall 1960 to Fall 1983

Storrs Campus							
	1960	1970	1980	1981	1982	1983	
Total : Undergraduates	6,606	11,474	12,089	11,993	11,955	12,140	
School/College	% of Total	% of Total	% of Total	% of Total	% of Total	Number	% of Total
Ratcliffe Hicks	1.7	0.9	1.1	1.0	0.8	75	0.6
Agriculture & Natural Resources	3.6	2.8	6.7	6.2	5.6	605	5.0
Allied Health	---	---					
Physical Therapy			3.5	3.4	3.4	409	3.4
Business	3.2	3.1					
Education	14.0	8.2	16.7	16.7	16.6	2,004	16.5
Physical Education	2.6	5.2					
Engineering			3.7	2.8	2.7	352	2.9
Family Studies	1.7	1.6					
Fine Arts	12.9	7.2	12.7	13.1	13.5	1,592	13.1
Liberal Arts & Sciences	3.6	4.0	3.1	2.7	2.6	353	2.9
Nursing	---	4.2	4.7	4.4	4.4	551	4.5
Pharmacy	45.8	56.5	40.0	42.2	42.9	5,256	43.3
General Studies	5.1	3.3	3.9	3.8	4.2	535	4.4
	5.8	3.0	3.7	3.4	2.9	357	3.0
	---	---	0.2	0.3	0.4	51	0.4
	100.0	100.0	100.0	100.0	100.0	12,140	100.0

Storrs and Regional Campuses							
	1960	1970	1980	1981	1982	1983	
Total : Undergraduates	7,990	14,287	14,412	14,719	14,843	14,799	
School/College	% of Total	% of Total	% of Total	% of Total	% of Total	Number	% of Total
Ratcliffe Hicks	1.4	0.7	0.9	0.8	0.6	75	0.5
Agriculture & Natural Resources	3.1	2.7	6.6	6.2	5.4	699	4.7
Allied Health	---	---					
Physical Therapy			3.0	2.9	2.8	423	2.9
Business	2.8	2.8					
Education	14.8	8.7	15.4	14.8	14.4	2,163	14.6
Physical Education	2.2	4.2					
Engineering			3.2	2.4	2.4	376	2.5
Family Studies	1.4	1.4					
Fine Arts	14.7	8.2	13.0	13.4	13.8	1,956	13.2
Liberal Arts & Sciences	3.2	3.8	2.9	2.5	2.4	396	2.7
Nursing	---	3.7	4.4	4.1	4.0	603	4.1
Pharmacy	47.0	57.9	42.6	44.6	45.3	6,683	45.2
General Studies	4.3	3.1	3.5	3.4	3.6	570	3.9
	5.1	2.6	3.3	2.9	2.5	375	2.5
	---	---	1.2	2.0	2.8	480	3.2
	100.0	100.0	100.0	100.0	100.0	14,799	100.0

OIR/LEI/eh
December, 1983

¹Percents based on headcount, excluding non-degree enrollment.

The University of Connecticut
Storrs Campus and Professional Schools
(excluding Health Center)
Graduate and Professional Enrollment in Each College/School¹
Selected Years, Fall 1960 to Fall 1983

College/School	1960	1970	1980	1981	1982	1983
Agriculture & Natural Resources	46	72	121	132	125	164
Allied Health	---	---	---	17	16	19
Business - Storrs	---	102	198	187	160	182
Hartford	79	203	465	458	494	436
Stamford	---	252	436	461	448	425
Danbury	---	---	201	207	203	183
Sub-total, Business	79	557	1,300	1,313	1,313	1,226
Education (includes 6th year)	456	989	916	927	940	947
Engineering	218	506	270	363	351	385
Family Studies	5	73	44	55	67	52
Fine Arts	---	58	80	86	109	109
Health Center ²	---	---	100	113	115	125
Liberal Arts & Sciences	401	1,344	1,059	1,105	1,075	1,166
Nursing	---	---	88	96	102	113
Pharmacy	19	41	58	67	69	70
Social Work	87	285	470	469	463	485
Sub-total, Graduate	1,315	3,925	4,506	4,743	4,745	4,861
Law	300	537	646	660	681	688
Total	1,615	4,462	5,152	5,403	5,426	5,549

Graduate and Professional Enrollment and Percent in Each College/School¹
Selected Years, Fall 1960 to Fall 1983

	1960	1970	1980	1981	1982	1983
Total & Graduate & Professional	1,615	4,462	5,152	5,403	5,426	5,549
College/School	% of Total	% of Total	% of Total	% of Total	% of Total	% of Total
Agriculture & Natural Resources	2.6	1.6	2.4	2.4	2.3	3.0
Allied Health	---	---	---	0.3	0.3	0.3
Business	4.9	12.5	25.2	24.3	24.2	22.1
Education	28.2	22.2	17.5	17.1	17.3	17.1
Engineering	13.5	11.4	5.2	6.7	6.5	6.9
Family Studies	0.6	1.6	0.9	1.0	1.2	0.9
Fine Arts	---	1.3	1.6	1.6	2.0	2.0
Health Center ²	---	---	1.9	2.1	2.1	2.3
Liberal Arts & Sciences	24.6	30.1	20.6	20.5	19.8	21.0
Nursing	---	---	1.7	1.8	1.9	2.0
Pharmacy	1.2	0.9	1.1	1.3	1.3	1.3
Social Work	5.4	6.4	9.1	8.7	8.5	8.7
Sub-total, Graduate	81.4	88.0	87.5	87.8	87.4	87.6
Law	18.6	12.0	12.5	12.2	12.6	12.4
	100.0	100.0	100.0	100.0	100.0	100.0

CIR/LEI/en
December, 1983

¹Head count (full-time plus part-time). Excludes non-degree enrollment.

²Biomedical Sciences, Community Health, and Dental Science. Does not include the Medical or Dental School.

The University of Connecticut
Total University
Comparison of Fall 1982 and Fall 1983 Enrollment

	Undergraduate - Full-time and Part-time					
	Fall 1982	Fall 1983			Change in Total Headcount	
		FT	PT	Total	#	%
Storrs						
Agriculture - Ratcliffe Hicks	90	69	6	75	- 15	- 16.7
Agriculture & Natural Resources	667	562	43	605	- 62	- 9.3
Allied Health	408	394	15	409	+ 1	+ 0.2
Business	1,989	1,961	43	2,004	+ 15	+ 0.8
Education	328	338	14	352	+ 24	+ 7.3
Engineering	1,611	1,513	79	1,592	- 19	- 1.2
Family Studies	311	329	24	353	+ 42	+ 13.5
Fine Arts	526	532	19	551	+ 25	+ 4.8
Liberal Arts & Sciences	5,128	5,047	209	5,256	+128	+ 2.5
Nursing	499	464	71	535	+ 36	+ 7.2
Pharmacy	348	344	13	357	+ 9	+ 2.6
General Studies	50	2	49	51	+ 1	+ 2.0
Sub-total	11,955	11,555	585	12,140	+185	+ 1.6
Unclassified	339	40	304	344	+ 5	+ 1.5
Storrs Total	12,294	11,595	889	12,484	+190	+ 1.6
Regional Campuses - by School						
Agriculture & Natural Resources	134	76	18	94	- 40	- 29.9
Allied Health	7	13	1	14	+ 7	+100.0
Business	153	143	16	159	+ 6	+ 3.9
Education	27	18	6	24	- 3	- 11.1
Engineering	439	344	20	364	- 75	- 17.1
Family Studies	46	33	10	43	- 3	- 6.5
Fine Arts	69	49	3	52	- 17	- 24.6
Liberal Arts & Sciences	1,593	1,279	148	1,427	-166	- 10.4
Nursing	40	33	2	35	- 5	- 12.5
Pharmacy	22	16	2	18	- 4	- 18.2
General Studies	358	8	421	429	+ 71	+ 19.8
Sub-total	2,888	2,012	647	2,659	-229	- 7.9
Unclassified	974	17	1,026	1,043	+ 69	+ 7.1
Regional Campuses Total	3,862	2,029	1,673	3,702	-160	- 4.1
Credit Extension	14	---	13	13	- 1	- 7.1
University - Total Undergraduate Level	16,170	13,624	2,575	16,199	+ 29	+ 0.2

	Undergraduate					Unclassified				
	Fall 1982	Fall 1983			Change in Headcount		Fall 1982	Fall 1983	Change in Headcount	
		FT	PT	Total	#	%			#	%
University of Connecticut at:										
Avery Point	453	341	95	436	- 17	- 3.8	158	193	+ 35	+ 22.2
Hartford	986	662	159	821	-165	-16.7	195	195	--	--
Stanford	705	417	298	715	+ 10	+ 1.4	489	518	+ 29	+ 5.9
Torrington	181	130	32	162	- 19	-10.5	78	55	- 23	- 29.5
Waterbury	563	462	63	525	- 38	- 6.8	54	82	+ 28	+ 51.9
Total	2,888	2,012	647	2,659	-229	- 7.9	974	1,043	+ 69	+ 7.1

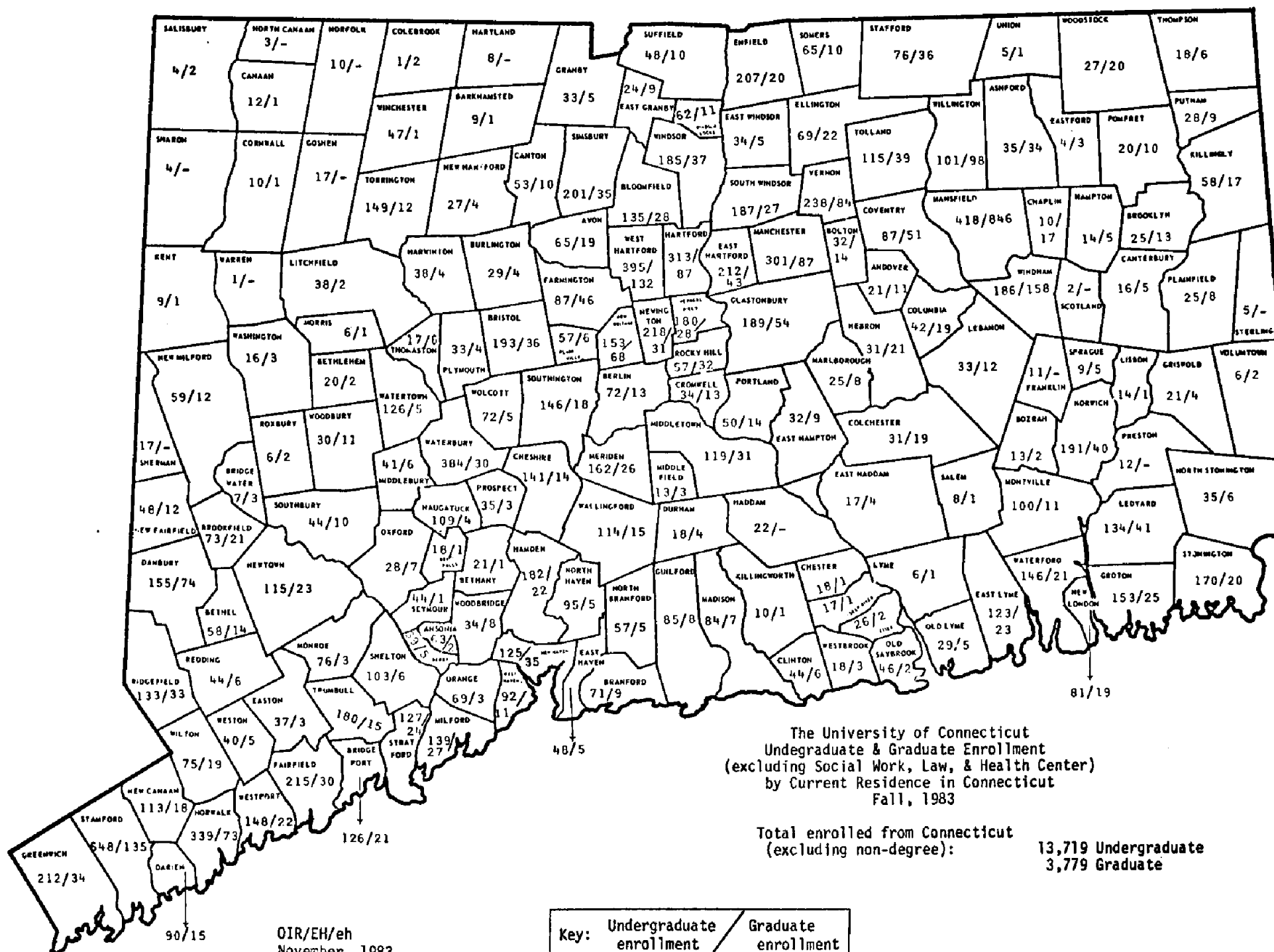
(continued)

The University of Connecticut
Total University
Comparison of Fall 1982 and Fall 1983 Enrollment

Graduate - Full-time & Part-time						
	Fall 1982	FT	PT	Total	Change in Total Headcount	
					#	%
Agriculture & Natural Resources	125	109	55	164	+ 39	+ 31.2
Allied Health	16	5	14	19	+ 3	+ 18.8
Business - Storrs	168	155	27	182	+ 14	+ 8.3
Hartford	494	6	430	436	- 58	- 11.7
Storrs	448	25	400	425	- 23	- 5.1
Dartmouth	203	5	178	183	- 20	- 9.9
Sub-total - Business	1,313	191	1,035	1,226	- 87	- 6.6
Education (includes 6th Year)	940	229	718	947	+ 7	+ 0.7
Engineering	351	220	165	385	+ 34	+ 9.7
Family Studies	67	33	19	52	- 15	- 22.4
Fine Arts	109	71	38	109	-	-
Health Center - Biomedical Science	115	81	44	125	+ 10	+ 8.7
Liberal Arts & Sciences	1,075	825	341	1,166	+ 91	+ 8.5
Nursing	102	47	66	113	+ 11	+ 9.7
Pharmacy	69	64	6	70	+ 1	+ 1.4
Social Work	463	485	---	485	+ 22	+ 4.8
Sub-total - Degree	4,745	2,360	2,501	4,861	+116	+ 2.4
Unclassified - Storrs	577	27	525	552	- 25	- 4.3
Other Locations	169	---	218	218	+ 49	+ 29.0
Social Work	388	9	332	341	- 47	- 12.1
MBA	70	---	45	45	- 25	- 35.7
Sub-total - Non-Degree	1,204	36	1,120	1,156	- 48	- 4.0
Total - All Graduate Level	5,949	2,396	3,621	6,017	+ 68	+ 1.1
School of Law	681	442	246	688	+ 7	+ 1.0

All Students, by Full-time/Part-time Status and Sex					
		Fall 1982	Fall 1983	Change	
				#	%
Undergraduate Level	Full-time	13,763	13,624	-139	- 1.0
	Part-time	2,407	2,575	+168	+ 7.0
	Male	7,838	7,723	-115	- 1.5
	Female	8,332	8,476	+144	+ 1.7
Graduate level	Full-time	2,220	2,396	+176	+ 7.9
	Part-time	3,729	3,621	-108	- 2.9
	Male	2,727	2,832	+105	+ 3.9
	Female	3,222	3,185	- 37	- 1.1
School of Law	Full-time	425	442	+ 17	+ 4.0
	Part-time	256	246	- 10	- 3.9
	Male	375	369	- 6	- 1.6
	Female	306	319	+ 13	+ 4.2
University Total	Full-time	16,408	16,462	+ 54	+ 0.3
	Part-time	6,392	6,442	+ 50	+ 0.8
	Male	10,940	10,924	- 16	- 0.1
	Female	11,860	11,980	+120	+ 1.0
Total		22,800	22,904	+104	+ 0.5

Health Center					
		Fall 1982	Fall 1983	Change	
				#	%
Medicine	Medical Students	340	347	+ 7	+ 2.1
	Interns & Residents	279	244	- 35	- 12.5
	Sub-total	619	591	- 28	- 4.5
Dental Medicine	Dental Students	176	177	+ 1	+ 0.6
	Residents (postgraduates)	60	64	+ 4	+ 6.7
	Sub-total	236	241	+ 5	+ 2.1
Medical & Dental Schools	Students	516	524	+ 8	+ 1.6
	Interns & Residents	339	308	- 31	- 9.1
	Sub-total	855	832	- 23	- 2.7



OIR/EH/eh
November, 1983

The University of Connecticut
Storrs & Regional Campuses
Undergraduate Student Enrollment
By Residence
Fall 1982 and Fall 1983

	Fall 1982			Fall 1983			Change from 1982 to 1983					
	Full-time	Part-time	Total	Full-time	Part-time	Total	Full-time		Part-time		Total	
	#	#	#	#	#	#	#	%	#	%	#	%
Storrs												
In-State												
New freshmen	2,018	25	2,043	2,117	21	2,138	+ 99	+ 4.9	- 4	- 16.0	+ 95	+ 4.7
All other undergraduates	8,327	551	8,878	8,330	541	8,871	+ 3	0.0	- 10	- 1.8	- 7	0.0
Out-of-State												
New freshmen	260	1	261	317	4	321	+ 57	+ 21.9	+ 3	+300.0	+ 60	+ 23.0
All other undergraduates	716	13	729	742	18	760	+ 26	+ 3.6	+ 5	+ 38.5	+ 31	+ 4.3
Foreign												
New freshmen	10	---	10	16	---	16	+ 6	+ 60.0	0	0.0	+ 6	+ 60.0
All other undergraduates	33	1	34	33	1	34	0	0.0	0	0.0	0	0.0
Total	11,364	591	11,955	11,555	585	12,140	+191	+ 1.7	- 6	- 1.0	+185	+ 1.6
Regional Campuses												
In-State												
New freshmen	1,151	15	1,166	840	22	862	-311	- 27.0	+ 7	+ 46.7	-304	- 26.1
All other undergraduates	1,163	527	1,690	1,145	615	1,760	- 18	- 1.5	+ 88	16.7	+ 70	+ 4.1
Out-of-State												
New freshmen	1	---	1	9	---	9	+ 8	+800.0	0	0.0	+ 8	+800.0
All other undergraduates	10	12	22	8	9	17	- 2	- 20.0	- 3	- 25.0	- 5	- 22.7
Foreign												
New freshmen	7	---	7	1	---	1	- 6	- 85.7	0	0.0	- 6	- 85.7
All other undergraduates	2	---	2	9	1	10	+ 7	+350.0	+ 1	+100.0	+ 8	+400.0
Total	2,334	554	2,888	2,012	647	2,659	-322	- 13.8	+ 93	+ 16.8	-229	- 7.9
Storrs & Regional Campuses												
In-State												
New freshmen	3,169	40	3,209	2,957	43	3,000	-212	- 6.7	+ 3	+ 7.5	-209	- 6.5
All other undergraduates	9,490	1,078	10,568	9,475	1,156	10,631	- 15	- 0.2	+ 78	+ 7.3	+ 63	+ 0.6
Out-of-State												
New freshmen	261	1	262	326	4	330	+ 65	+ 24.9	+ 3	+300.0	+ 68	+ 26.0
All other undergraduates	726	25	751	750	27	777	+ 24	+ 3.3	+ 2	+ 8.0	+ 26	+ 3.5
Foreign												
New freshmen	17	---	17	17	---	17	0	0.0	0	0.0	0	0.0
All other undergraduates	35	1	36	42	2	44	+ 7	+ 20.0	+ 1	+100.0	+ 8	+ 22.2
Total	13,698	1,145	14,843	13,567	1,232	14,799	-131	- 1.0	+ 87	+ 7.6	- 44	- 0.3

OIR/DLK/eh
January, 1984

The University of Connecticut
Total University
Minority Student Enrollment
Fall 1983

	Undergraduate			Graduate			Professional			Unclassified			Total All Minority (Headcount)
	FT	PT	Total	FT	PT	Total	FT	PT	Total	FT	PT	Total	
All Locations													
Black	421	40	461	59	44	103				--	75	75	639
Native American	26	1	27	5	4	9				--	6	6	42
Asian American	207	15	222	54	38	92				2	56	58	372
Hispanic	224	16	240	81	27	108				2	44	46	394
Sub-total	878	72	950	199	113	312				4	181	185	1,447
% Minority	6.5%	5.8%	6.4%	8.4%	4.5%	6.4%				4.3%	7.3%	7.2%	
Law													
Black							27	8	35				35
Native American							--	--	--				--
Asian American							--	1	1				1
Hispanic							11	2	13				13
Sub-total							38	11	49				49
% Minority							8.6%	4.5%	7.1%				
Health Center¹													
Black							13	--	13				13
Native American							--	--	--				--
Asian American							17	--	17				17
Hispanic							12	--	12				12
Sub-total							42	--	42				42
% Minority							8.0%	--	8.0%				
							Law 404	235	639				
							HC 482	--	482				
							--	--	--				
All Other Students	12,689	1,160	13,849	2,161	2,388	4,549	866	235	1,121	89	2,282	2,371	
							Law 442	246	688				
							HC 524	--	524				
							--	--	--				
Total	13,567	1,232	14,799	2,360	2,501	4,861	966	246	1,212	93	2,463	2,556	

OIR/LET/eh
December, 1983

¹Excludes Residents and Interns.

The University of Connecticut
Storrs Campus
Undergraduate Enrollment
By School/College,
by Minority, and by Male/Female
Fall 1983

School/College	Black	Native American	Asian American	Hispanic	Total Enroll- ment	# Male	# Female
Ratcliffe Hicks	-	-	-	-	75	45	30
Agriculture & Natural Resources	3	2	2	7	605	245	360
Allied Health	19	2	2	14	409	59	350
Business	72	8	17	31	2,004	1,027	977
Education	1	-	1	2	352	94	258
Engineering	38	2	53	22	1,592	1,268	324
Family Studies	11	-	4	6	353	27	326
Fine Arts	13	2	4	1	551	206	345
General Studies	-	-	-	-	51	11	40
Liberal Arts & Sciences	193	4	71	95	5,256	2,620	2,636
Nursing	18	1	4	6	535	33	502
Pharmacy	4	-	14	1	357	133	224
Total	372	21	172	185	12,140	5,768	6,372

Regional Campuses
Undergraduate Enrollment
By Location, by Minority, and by Male/Female
Fall 1983

Location	Black	Native American	Asian American	Hispanic	Total Enroll- ment	# Male	# Female
Avery Point	11	-	8	5	436	220	216
Hartford	37	2	19	19	821	429	392
Stanford	34	1	17	20	715	305	412
Torrington	-	-	-	3	162	66	96
Waterbury	7	3	6	8	525	267	258
Total	89	6	50	55	2,659	1,285	1,374

OIR/LET/eh
December, 1983

The University of Connecticut
Storrs Campus
Undergraduate Enrollment
By Major, by Class, and by Full-time/Part-time
Fall 1983

School/Department	F	S	Jr	Sr	All FT	PT	FT & PT
Agriculture & Natural Resources							
Hatchliffe Hicks:							
Animal Science	17	17	--	--	34	1	35
Horticulture	16	18	--	--	34	5	39
Undecided	1	--	--	--	1	--	1
Sub-total	34	35	--	--	69	6	75
Agriculture & Natural Resources	13	3	2	--	18	4	22
Ag. Economics & Rural Sociology	5	4	6	4	19	2	21
Agricultural Engineering	2	4	9	4	19	2	21
Animal Science	58	54	60	52	224	8	232
Nutritional Sciences	7	9	22	16	54	4	58
Pathobiology	10	8	22	13	53	3	56
Plant Sciences:							
Agronomy	1	4	7	6	18	3	21
Environmental Horticulture	5	6	15	26	52	2	54
Landscape Design	4	7	12	16	39	8	47
Renewable Natural Resources	8	10	32	9	59	6	65
Undecided	4	2	--	1	7	1	8
Sub-total	117	111	187	147	562	43	605
Total Ag. & Natural Resources	151	146	187	147	631	49	680
Allied Health							
Clinical Dietetics	10	12	14	24	60	2	62
Medical Technology	22	23	19	24	88	5	93
Physical Therapy	47	40	66	91	244	7	251
Undecided	1	--	1	--	2	1	3
Total Allied Health	80	75	100	139	394	15	409
Business							
Accounting	108	106	201	140	555	13	568
Business, General	160	98	81	32	371	5	376
Finance	32	41	118	168	359	7	366
Real Estate & Urban Economics	2	2	2	3	9	--	9
Risk & Insurance	4	1	4	6	15	1	16
Management & Organization	1	1	5	20	27	2	29
Health Systems	8	4	18	8	38	2	40
Management & Human Resources Development	50	69	54	22	195	2	197
Marketing	47	55	139	140	381	11	392
Undecided	8	--	2	1	11	--	11
Total Business	420	377	624	540	1,981	43	2,024
Education							
Curriculum & Instruction:							
Elementary Education	--	--	37	37	74	4	78
Secondary	1	--	4	31	36	3	39
Educational Psychology:							
Rehabilitation	2	--	9	6	17	--	17
Special Education	1	--	23	25	49	1	50
Higher, Technical & Adult:							
Agricultural Ed.	--	--	1	1	2	--	2
Home Economics Ed.	--	--	1	1	2	--	2
Sport & Leisure Studies:							
Sport Studies	4	1	3	8	16	2	18
Recreational Services	4	7	9	8	28	2	30
Sport & Leisure Studies	34	33	25	23	115	1	116
Total Education	46	41	112	140	339	13	352
Engineering							
Chemical Engineering	26	41	61	79	207	9	216
Civil Engineering	20	19	30	55	124	8	132
Computer Science	117	78	73	78	346	15	361
Electrical Engineering	99	63	90	146	398	28	426
Mechanical Engineering	64	62	120	163	409	15	424
Mechanical Technology	--	--	4	7	11	4	15
Undecided	4	10	3	1	18	--	18
Total Engineering	330	273	381	529	1,513	79	1,592

(continued)

The University of Connecticut
Storrs Campus
Undergraduate Enrollment
By Major, by Class, and by Full-time/Part-time
Fall 1983

School/Department	F	S	Jr	Sr	All FT	PT	FT & PT
Family Studies							
Design & Resource Management	16	29	47	63	155	14	169
Home Economics, General	1	1	1	--	3	1	4
Human Development & Family Relations	14	28	60	58	160	9	169
Undecided	4	1	4	2	11	--	11
Total Family Studies	35	59	112	123	329	24	353
Fine Arts							
Art:							
Art, General Program	2	9	5	3	19	1	20
Ceramics	1	--	3	--	4	1	5
Graphics	43	40	55	44	182	5	187
Painting	7	10	10	9	36	1	37
Photography	9	10	3	5	27	1	28
Printmaking	1	2	3	1	7	2	9
Sculpture	1	2	3	2	8	1	9
Undecided	4	--	4	--	8	--	8
Sub-total	68	73	86	64	291	12	303
Dramatic Arts:							
Acting	19	21	17	7	64	1	65
Directing	4	--	2	3	9	--	9
Drama, General Program	7	10	10	18	45	3	48
Puppetry	2	--	--	--	2	1	3
Technical Design	3	1	3	2	9	--	9
Sub-total	35	32	32	30	129	5	134
Music:							
Applied	8	3	12	8	31	--	31
Composition	2	1	2	1	6	1	7
Education (EA)	11	9	14	9	43	--	43
Music, General Program	7	9	7	6	29	1	30
Music History	--	--	--	1	1	--	1
Theory	--	--	--	1	1	--	1
Sub-total	28	22	35	26	111	2	113
Total Fine Arts	131	127	153	120	531	19	550
General Studies							
General Studies	--	--	--	--	--	50	50
Liberal Arts & Sciences							
Anthropology	5	5	5	9	24	1	25
Art History	2	4	5	5	16	--	16
Biological Sciences	246	186	143	97	672	38	710
Biophysics	8	3	4	--	15	--	15
Chemistry	37	44	59	46	186	18	204
Communication Sciences	65	62	117	83	327	14	341
Economics	91	111	160	143	505	13	518
English	44	67	124	99	334	14	348
Geography	2	3	10	18	33	1	34
Geology/Geophysics	8	12	19	21	60	6	66
Germanic & Slavic Languages:							
German	3	4	9	6	22	--	22
Russian	2	1	1	4	8	--	8
Slavic & E. European Studies	--	3	2	--	5	--	5
History	28	29	48	54	159	3	162
Individualized Major	5	7	21	26	59	2	61
Journalism	49	34	35	17	135	5	140
Latin American Studies	--	4	7	3	14	1	15
Linguistics/Philosophy	3	3	1	--	7	--	7
Mathematics	113	95	56	44	308	15	323
Math/Actuarial	11	13	29	27	80	--	80
Math/Statistics	11	6	13	8	38	1	39
Philosophy	6	--	12	5	23	3	26
Physics	41	29	27	9	106	4	110
Political Science	122	111	145	107	485	10	495
Psychology	112	100	144	101	457	24	481
Romance Languages:							
Classics	2	1	--	1	4	--	4
French	14	8	13	21	56	1	57
Italian	2	3	--	6	11	1	12
Portuguese	--	1	1	--	2	--	2
Spanish	7	9	11	11	38	3	41
Sociology	20	15	33	27	95	5	100

(continued)

The University of Connecticut
Storrs Campus
Undergraduate Enrollment
By Major, by Class, and by Full-time/Part-time
Fall 1983

School/Department	F	S	Jr	Sr	All FT	PT	FT & PT
Liberal Arts & Sciences (cont.)							
Statistics	2	2	3	2	9	--	9
Urban Studies	--	2	4	4	10	--	10
Undecided	321	213	191	19	744	26	770
Total Liberal Arts & Sciences	1,382	1,190	1,452	1,023	5,067	209	5,256
Nursing							
Nursing	96	111	138	119	464	71	535
Pharmacy							
Pharmacy	72	46	76	150	344	13	357
SUMMARY - STORRS CAMPUS							
Ratcliffe Hicks	34	35	--	--	69	6	75
Agriculture & Natural Resources	117	111	187	147	562	43	605
Allied Health	80	75	100	139	394	15	409
Business	420	377	624	540	1,961	43	2,004
Education	46	41	112	140	339	13	352
Engineering	330	273	381	529	1,513	79	1,592
Family Studies	35	59	112	123	329	24	353
Fine Arts	131	127	153	120	531	19	550
General Studies	--	--	--	--	--	50	50
Liberal Arts & Sciences	1,382	1,190	1,452	1,023	5,067	209	5,256
Nursing	96	111	138	119	464	71	535
Pharmacy	72	46	76	150	344	13	357
Total Storrs Campus	2,743	2,445	3,335	3,030	11,553	585	12,138

Regional Campuses
Undergraduate Enrollment
By Location, by Class, and by Full-time/Part-time
Fall 1983

Location	F	S	Jr	Sr	ALL FT	PT	FT & PT
Avery Point	202	122	12	5	341	95	436
Hartford	350	292	13	7	662	159	821
Storrs	191	157	44	25	417	298	715
Torrington	67	54	6	3	130	32	162
Waterbury	261	185	12	4	462	63	525
Total Regional Campuses	1,071	810	87	44	2,012	647	2,659

OIR/HKA/eh
January 1984

The University of Connecticut
Regional Campuses Enrollment, by School¹
Fall Semester 1977 to 1983

School/College	Avery Point	Hartford	Stamford	Torrington	Waterbury	Total
Agriculture & Natural Resources:						
1977	37	65	48	23	53	226
1978	35	57	34	19	35	180
1979	36	53	32	7	39	167
1980	23	43	29	7	39	141
1981	23	60	24	23	42	172
1982	17	48	20	22	27	134
1983	15	24	21	12	22	94
Allied Health:						
1977	2	4	1	--	2	9
1978	1	3	4	--	6	14
1979	2	4	2	2	4	14
1980	2	4	2	1	1	10
1981	1	5	--	4	6	16
1982	--	2	1	--	4	7
1983	1	4	2	--	7	14
Business:						
1977	46	124	136	14	72	392
1978	47	152	125	26	72	422
1979	25	86	76	16	56	259
1980	22	76	60	8	33	199
1981	20	61	60	7	31	179
1982	19	45	52	5	32	153
1983	18	44	52	6	39	159
Education:						
1977	7	4	4	--	6	21
1978	8	3	6	1	4	22
1979	2	5	1	--	1	9
1980	5	5	1	1	--	12
1981	8	3	3	1	--	15
1982	11	7	4	3	2	27
1983	11	5	2	2	4	24
Engineering:						
1977	60	114	69	18	106	367
1978	54	156	85	19	108	422
1979	45	135	59	18	87	344
1980	54	128	48	15	83	328
1981	73	149	58	21	101	402
1982	74	166	61	23	115	439
1983	71	128	56	18	91	364
Family Studies:						
1977	8	15	9	5	12	49
1978	8	17	10	6	9	50
1979	12	13	6	3	10	44
1980	15	6	10	3	8	42
1981	11	12	8	4	8	43
1982	11	15	8	4	8	46
1983	7	18	7	3	8	43

(continued)

¹ Includes only undergraduate students; excludes non-degree students.

The University of Connecticut
Regional Campuses Enrollment, by School¹
Fall Semester 1977 to 1983

School/College	Avery Point	Hartford	Stamford	Torrington	Waterbury	Total
Fine Arts:						
1977	8	18	16	1	7	50
1978	8	24	8	9	12	61
1979	6	23	13	2	9	53
1980	9	22	20	--	12	63
1981	9	27	22	3	12	73
1982	12	27	21	4	5	69
1983	14	11	13	2	12	52
General Studies:						
1977	--	--	27	--	--	27
1978	--	--	35	--	--	35
1979	--	2	57	5	4	68
1980	--	23	103	11	9	146
1981	25	56	143	9	13	246
1982	45	98	182	15	18	358
1983	58	106	210	19	36	429
Liberal Arts & Sciences:						
1977	159	436	286	92	276	1,249
1978	180	430	268	86	264	1,228
1979	217	429	283	60	253	1,242
1980	235	466	281	73	261	1,316
1981	230	535	323	101	322	1,511
1982	256	556	352	100	329	1,593
1983	231	462	348	98	288	1,427
Nursing:						
1977	1	7	7	--	5	20
1978	3	10	--	2	13	28
1979	4	12	2	--	13	31
1980	3	21	--	3	6	33
1981	9	17	3	8	8	45
1982	3	16	2	4	15	40
1983	7	14	1	2	11	35
Pharmacy:						
1977	4	4	8	5	10	31
1978	1	9	5	1	11	27
1979	3	12	5	1	21	42
1980	3	8	3	1	19	34
1981	4	5	1	2	12	24
1982	5	6	2	1	8	22
1983	3	5	3	--	7	18
Total						
1977	332	791	611	158	549	2,441
1978	345	661	580	169	534	2,489
1979	352	774	536	114	497	2,273
1980	371	802	557	123	471	2,324
1981	413	930	645	183	555	2,726
1982	453	986	705	181	563	2,888
1983	436	821	715	162	525	2,659

OIR/LET/eh
December, 1983

¹ Includes only undergraduate students; excludes non-degree students.

The University of Connecticut
(excluding Health Center)
Summer Session Enrollment
(all sessions)
Selected Years 1975-1983

	1975	1980	1981	1982	1983
Undergraduates					
Agriculture & Natural Resources	196	182	164	150	137
Allied Health	145	202	159	185	193
Business Administration	536	561	576	579	668
Education	179	91	70	72	87
Engineering	332	530	540	583	674
Family Studies	129	99	93	68	101
Fine Arts	126	86	84	79	72
General Studies	---	67	97	140	242
Liberal Arts & Sciences	1,406	1,292	1,379	1,366	1,677
Nursing	172	126	140	188	184
Pharmacy	99	112	102	84	79
Non-degree	951	1,472	1,606	1,899	2,015
Credit Extension	---	---	---	6	143
Total	4,271	4,820	5,010	5,399	6,272
Graduate and Professional					
Degree	1,058	924	836	785	816
Non-Degree	917	1,134	974	851	760
School of Social Work	286	230	263	203	225
School of Law	213	216	197	237	246
MBA Programs	806	938	898	882	923
Credit Extension	---	---	---	140	116
Total	3,280	3,442	3,168	3,098	3,086
Grand Total	7,551	8,262	8,178	8,497	9,358

OIR/DLK/dlk
November 1983

Source: Registrar's Office

The University of Connecticut
Storrs and Regional Campuses
Transfer Students
Selected Years, Fall 1975-1983

Storrs Campus					
School/College	Fall 1975	Fall 1980	Fall 1981	Fall 1982	Fall 1983
Agriculture & Natural Resources	67	61	49	45	49
Allied Health	12	19	19	20	32
Business Administration	91	39	29	34	40
Education	33	27	29	26	18
Engineering	71	82	79	84	78
Family Studies	41	26	19	18	19
Fine Arts	46	44	38	47	41
Liberal Arts & Sciences	261	270	271	282	380
Nursing	1	30	20	20	25
Pharmacy	1	10	10	13	22
Sub-total, Storrs	624	608	563	589	712

Regional Campuses					
	Fall 1975	Fall 1980	Fall 1981	Fall 1982	Fall 1983
All Schools	192	197	244	210	186
Total, Storrs and Regional Campuses	816	805	807	799	898

OIR/DLK/dlk
November 1983

Source: Based on number of paid deposits, as reported by the Admissions Office.

The University of Connecticut
Storrs and Regional Campuses
Age Distribution, Undergraduate Students¹
Fall 1983

		Age																	
		15 - 19		20 - 24		25 - 29		30 - 34		35 - 39		40 - 44		45 - 59		60+		Total	
		M	F	M	F	M	F	M	F	M	F	M	F	M	F	M	F	M	F
Storrs:																			
Full-time		1,963	2,576	3,256	3,269	216	143	50	54	15	29	1	12	2	7	1	1	5,504	6,091
Part-time		50	29	310	234	76	57	25	41	9	21	4	19	5	18	3	1	482	420
Total		2,013	2,605	3,566	3,503	292	200	75	95	24	50	5	31	7	25	4	2	5,986	6,511
		37.0%		56.6%		3.9%		1.4%		0.6%		0.3%		0.3%		---			
Regional Campuses:																			
Avery Point																			
Full-time		134	119	39	29	9	5	1	-	1	1	-	2	-	1	-	-	184	157
Part-time		12	16	47	39	23	25	23	17	7	27	5	17	8	19	1	2	126	162
Total		146	135	86	68	32	30	24	17	8	28	5	19	8	20	1	2	310	319
		44.7%		24.5%		9.9%		6.5%		5.7%		3.8%		4.5%		0.5%			
Hartford																			
Full-time		293	223	73	46	13	5	6	3	-	-	-	1	-	-	-	1	385	279
Part-time		23	15	63	67	23	39	11	24	5	27	4	19	3	24	-	5	132	220
Total		316	238	136	113	36	44	17	27	5	27	4	20	3	24	-	6	517	499
		54.5%		24.5%		7.9%		4.3%		3.1%		2.4%		2.7%		0.6%			
Storford																			
Full-time		143	127	82	49	14	3	1	3	-	2	-	2	-	2	-	-	240	188
Part-time		53	40	143	154	39	89	21	69	9	44	7	45	13	76	2	1	287	518
Total		196	167	225	203	53	92	22	72	9	46	7	47	13	78	2	1	527	706
		29.4%		34.7%		11.8%		7.6%		4.5%		4.4%		7.4%		0.2%			
Torrington																			
Full-time		38	57	11	11	7	2	2	3	-	-	-	1	1	1	-	-	59	75
Part-time		6	7	12	9	6	7	5	9	1	11	-	6	-	4	-	-	30	53
Total		44	64	23	20	13	9	7	12	1	11	-	7	1	5	-	-	89	128
		49.8%		19.8%		10.1%		6.8%		5.5%		3.2%		2.8%		---			
Waterbury																			
Full-time		207	177	43	25	3	5	-	-	1	-	-	1	-	-	-	-	254	208
Part-time		6	10	21	27	5	11	3	9	3	15	-	15	2	18	-	-	40	105
Total		213	187	64	52	8	16	3	9	4	15	-	16	2	18	-	-	294	313
		65.9%		19.1%		4.0%		2.0%		3.1%		2.6%		3.3%		---			
Storrs & Regional Campuses:																			
Full-time		2,778	3,279	3,504	3,429	262	163	60	63	17	32	1	19	3	11	1	2	6,626	6,998
Part-time		150	117	596	530	172	228	88	169	34	145	20	121	31	159	6	9	1,097	1,478
Total		2,928	3,396	4,100	3,959	434	391	148	232	51	177	21	140	34	170	7	11	7,723	8,476
		39.0%		49.7%		5.1%		2.3%		1.4%		1.0%		1.3%		0.1%			

OIR/EH/en
January, 1984

¹Includes Full-time, Part-time, and Unclassified Undergraduate Students.

The University of Connecticut
Storrs and Regional Campuses
Applied, Admitted, and Deposits Paid
Selected Years 1975-1983

		1975	1980	1981	1982	1983
Applied:						
	Freshmen	13,807	11,460	12,613	13,614	12,763
	Transfers ¹	3,299	2,284	2,300	2,237	2,065
	Total	17,106	13,744	14,913	15,851	14,828
Admitted:						
Storrs:	Freshmen	4,820	5,253	5,448	5,422	6,431
	Transfers ¹	876	924	836	904	1,056
		5,696	6,177	6,284	6,326	7,487
Regional Campuses:						
	Freshmen	2,701	2,238	2,513	2,835	2,183
	Transfers ¹	342	327	400	351	284
		3,043	2,565	2,913	3,186	2,467
	Total	8,739	8,742	9,197	9,512	9,954
Deposits Paid:						
Storrs:	Freshmen	2,283	2,283	2,479	2,366	2,516
	Transfers ¹	624	608	560	589	689
		2,907	2,891	3,039	2,955	3,205
Regional Campuses:						
	Freshmen					
	Avery Point	190	149	178	218	174
	Hartford	484	369	438	436	302
	Stamford	289	163	209	228	173
	Torrington	74	52	87	75	51
	Waterbury	344	246	284	306	226
		1,381	979	1,196	1,263	926
	Transfers¹					
	Avery Point	30	40	54	31	29
	Hartford	50	73	91	71	61
	Stamford	70	47	47	59	54
	Torrington	5	16	17	18	13
	Waterbury	26	21	35	31	29
		181	197	244	210	186
	Total	4,469	4,067	4,479	4,428	4,317

OIR/DLK/dlk
December, 1983

Source: Admissions Office Annual Reports.

¹Transfers entering the Bachelor of General Studies program are not included in these figures.

The University of Connecticut
Storrs and Medicinal Campuses
Entering Freshmen Profile
Fall 1983

SAT Scores	Admitted				Registered			
	Verbal		Math		Verbal		Math	
	#	% of Total	#	% of Total	#	% of Total	#	% of Total
Storrs								
700-800	110	1.7	405	6.3	24	0.9	87	3.5
600-699	907	14.1	2,012	31.3	268	10.7	680	27.0
500-599	2,671	41.6	2,713	42.3	957	38.1	1,088	43.3
400-499	2,278	35.5	1,134	17.7	1,010	40.2	567	22.6
Below 400	454	7.1	156	2.4	253	10.1	90	3.6
Sub-total	6,420	100.0	6,420	100.0	2,512	100.0	2,512	100.0
	Mean V-513.8		Mean M-567.8		Mean V-499.6		Mean M-552.4	
Regional Campuses								
700-800	6	0.2	25	1.0	2	0.2	12	1.3
600-699	78	3.2	279	11.4	40	4.3	131	14.1
500-599	574	23.5	816	33.3	241	26.0	304	32.7
400-499	1,183	48.3	976	40.0	408	43.9	328	35.3
Below 400	606	24.8	351	14.3	238	25.6	154	16.6
Sub-total	2,447	100.0	2,447	100.0	929	100.0	929	100.0
	Mean V-450.2		Mean M-490.1		Mean V-453.8		Mean M-494.2	
Storrs & Regional Campuses								
700-800	116	1.3	430	4.9	26	0.8	99	2.9
600-699	985	11.1	2,291	25.8	308	9.0	811	23.6
500-599	3,245	36.6	3,529	39.8	1,198	34.8	1,392	40.5
400-499	3,461	39.0	2,110	23.8	1,418	41.2	895	26.0
Below 400	1,060	12.0	507	5.7	491	14.2	244	7.0
Total	8,867	100.0	8,867	100.0	3,441	100.0	3,441	100.0
	Mean V-496.0		Mean M-546.0		Mean V-487.1		Mean M-536.5	

High School Rank	Admitted		Registered	
	#	% of Total	#	% of Total
Storrs				
90-99%ile	2,628	40.9	894	35.6
80-89%ile	1,873	29.2	769	30.6
70-79%ile	1,001	15.6	428	17.0
Below 70%ile or no Rank	918	14.3	421	16.8
Sub-total	6,420	100.0	2,512	100.0
	Mean 84.4	Median 87.7	Mean 83.0	Median 86.1
Regional Campuses				
90-99%ile	246	10.1	145	15.6
80-89%ile	317	13.0	174	18.7
70-79%ile	475	19.4	161	17.3
Below 70%ile or no Rank	1,409	57.5	449	48.4
Sub-total	2,447	100.0	929	100.0
	Mean 66.1	Median 67.1	Mean 69.1	Median 71.9
Storrs & Regional Campuses				
90-99%ile	2,874	32.4	1,039	30.2
80-89%ile	2,190	24.7	943	27.4
70-79%ile	1,476	16.7	589	17.1
Below 70%ile or no Rank	2,327	26.2	870	25.3
Total	8,867	100.0	3,441	100.0
	Mean 79.3	Median 83.7	Mean 79.2	Median 83.6

OIR/dlk/dlk
November 1983

Source: Admissions Office Annual Report.

The University of Connecticut
Storrs and Regional Campuses
Mean SAT Scores & Class Rankings
Entering Freshmen
Selected Years, 1975-1983

School/College	SAT		Decile	Number of Freshmen		Total
	Verbal	Math	Class Rank	Men	Women	
Agriculture & Natural Resources						
1975	522	551	79.6	98	76	142
1980	493	531	80.6	56	72	128
1981	478	528	78.0	49	60	109
1982	512	549	82.4	34	47	81
1983	501	537	80.5	29	57	86
Allied Health						
1975	522	553	88.3	8	73	81
1980	509	561	88.7	6	57	63
1981	508	548	91.9	9	57	66
1982	523	560	90.1	11	63	74
1983	515	560	90.7	12	66	78
Business Administration						
1975	489	554	78.7	198	84	282
1980	493	553	83.4	185	177	362
1981	489	545	84.8	181	204	385
1982	504	553	85.0	177	205	382
1983	502	560	85.9	191	209	400
Engineering						
1975	518	613	83.0	208	27	235
1980	512	611	89.0	253	76	329
1981	515	603	88.7	286	91	377
1982	536	618	90.7	217	96	313
1983	529	624	90.3	242	90	332
Fine Arts						
1975	533	548	79.6	26	72	98
1980	491	506	79.2	45	72	117
1981	496	504	79.1	31	66	97
1982	490	499	79.5	33	61	94
1983	500	519	79.4	43	76	119
Family Studies						
1975	491	525	83.6	1	50	51
1980	482	488	79.7	1	24	25
1981	504	503	78.0	---	26	26
1982	467	459	73.1	1	23	24
1983	491	513	83.9	1	26	27

(continued)

The University of Connecticut
Storrs and Regional Campuses
Mean SAT Scores & Class Rankings
Entering Freshmen
Selected Years, 1975-1983

School/College	SAT		Decile	Number of Freshmen		Total
	Verbal	Math	Class Rank	Men	Women	
Liberal Arts & Sciences						
1975	526	564	83.8	551	579	1,130
1980	496	536	79.4	473	589	1,062
1981	496	538	80.3	588	645	1,233
1982	508	540	81.1	557	680	1,237
1983	493	539	80.0	587	677	1,264
Nursing						
1975	501	520	86.8	1	86	87
1980	461	516	86.9	1	95	96
1981	470	510	86.7	4	90	94
1982	510	516	88.0	1	82	83
1983	486	524	82.8	1	94	95
Pharmacy						
1975	520	583	88.5	53	60	113
1980	500	546	87.2	23	46	69
1981	497	571	80.8	23	39	62
1982	506	565	88.2	18	35	53
1983	481	555	87.3	20	51	71
Summary - Storrs ¹						
1975	518	564	83.0	1,149	1,113	2,262
1980	495	546	82.3	1,061	1,218	2,279
1981	496	547	82.5	1,186	1,289	2,475
1982	510	550	83.5	1,061	1,305	2,366
1983	500	552	83.0	1,143	1,369	2,512
Regional Campuses ¹						
1975	465	509	71.3	836	552	1,388
1980	453	495	68.6	551	427	978
1981	448	491	68.1	672	521	1,193
1982	454	504	69.5	708	557	1,265
1983	454	494	69.1	498	431	929
Storrs and Regional ¹ Campuses						
1975	498	543	78.6	1,985	1,665	3,650
1980	462	531	78.1	1,612	1,645	3,257
1981	480	528	77.7	1,858	1,810	3,668
1982	490	534	78.5	1,769	1,862	3,631
1983	487	536	79.2	1,641	1,800	3,441

OIR/DLK/eh
December, 1983

Source: Admissions Office Annual Reports.

¹Includes 30 to 50 freshmen not covered in the School figures.

The University of Connecticut
Storrs and Regional Campuses
Retention of Entering Freshmen
By Location at Entrance

	Storrs	Regional Campuses	Storrs and Regional Campuses
Fall 1965 to Spring 1969			
Entering Freshmen, Fall 1965	2,002	853	2,855
* Registered 8th Semester, Spring 1969	1,338	464	1,802
% Retention in Fourth Year	66.8	54.4	63.1
Fall 1975 to Spring 1979			
Entering Freshmen, Fall 1975	2,253	1,315	3,568
* Registered 8th Semester, Spring 1979	1,614	667	2,281
% Retention in Fourth Year	71.6	50.7	63.9
Fall 1977 to Spring 1981			
Entering Freshmen, Fall 1977	2,294	1,062	3,355
* Registered 8th Semester, Spring 1981	1,636	559	2,195
% Retention in Fourth Year	71.3	52.7	65.4
Fall 1978 to Spring 1982			
Entering Freshmen, Fall 1978	2,283	1,154	3,437
* Registered 8th Semester, Spring 1982	1,609	566	2,175
% Retention in Fourth Year	70.5	49.0	63.3
Fall 1979 to Spring 1983			
Entering Freshmen, Fall 1979	2,343	926	3,269
* Registered 8th Semester, Spring 1983	1,646	474	2,120
% Retention in Fourth Year	70.3	51.2	64.9

OIR/LET/DLK/dlk
December, 1983

The University of Connecticut
Degrees Conferred
1882 - 1983

1882 - 1933			1934 - 1983						
	BACHELOR'S	MASTER'S		BACHELOR'S	MASTER'S	Ph.D.	J.D.	D.D.S.	M.D.
1882	---		1934	101	3				
1883	6 ¹		1935	92	4				
1884	6		1936	134	3				
1885	6		1937	141	4				
1886	14		1938	150	7				
1887	6		1939	150	6				
1888	9		1940	176	10				
1889	6		1941	191	9				
1890	13		1942	260	19				
1891	13		1943	247	13				
1892	N/A		1944	203	27				
1893	15		1945	205	31				
1894	8		1946	278	11				
1895	8		1947	379	26				
1896	10		1948	687	46				
1897	15		1949	1,040	69	3			
1898	14		1950	1,570	119	7	44		
1899	19		1951	1,242	169	5	66		
1900	18		1952	1,077	271	10	47		
1901	10		1953	1,053	237	19	57		
1902	11		1954	1,105	249	17	55		
1903	6		1955	1,067	242	32	55		
1904	8		1956	1,081	304	28	56		
1905	15		1957	1,166	296	34	54		
1906	15		1958	1,337	328	37	51		
1907	17		1959	1,367	337	48	51		
1908	18		1960	1,272	318	53	63		
1909	29		1961	1,218	331	34	54		
1910	27		1962	1,289	300	47	67		
1911	N/A		1963	1,438	416	63	70		
1912	7		1964	1,631	501	62	67		
1913	2		1965	1,665	566	85	58		
1914	15		1966	1,679	656	105	70		
1915	10		1967	1,725	720	119	101		
1916	N/A		1968	1,942	772	111	103		
1917	26		1969	2,177	775	151	125		
1918	11		1970	2,397	849	148	97		
1919	15		1971	2,408	981	158	105		
1920	24	1	1972	2,954	978	204	163	12	29
1921	38	2	1973	3,191	947	176	186	17	31
1922	53	3	1974	3,228	953	191	202	11	32
1923	58	4	1975	3,208	996	193	180	16	37
1924	45	2	1976	3,239	1,083	217	189	29	61
1925	66	5	1977	3,278	1,172	200	208	24	67
1926	64	3	1978	3,243	1,225	189	192	38	66
1927	77	4	1979	3,072	1,058	161	210	43	85
1928	74	1	1980	2,925	1,098	194	210	43	84
1929	95	4	1981	3,081	1,136	205	168	44	83
1930	92	0	1982	2,878	1,051	168	179	44	91
1931	105	0	1983	2,889	1,087	159	187	41	84
1932	82	4							
1933	109	1							
			Total	75,936	22,843	3,633	3,790	362	750

OIR/DLK/eh
December, 1983

¹From 1883-1910 a "Certificate" was awarded rather than a "Degree"

The University of Connecticut
Total University
Degrees Conferred
Selected Years, 1970-1983

Bachelors

	Bachelors				
	1970	1980	1981	1982	1983
Agriculture & Natural Resources	67	267	262	201	181
Allied Health	60	107	136	78	113
Business Administration	260	537	584	603	590
Education	204	235 ¹	220 ¹	169 ¹	125 ¹
Engineering	157	305	296	331	340
Family Studies	148	162	162	128	105
Fine Arts	46	89	108	94	92
General Studies	---	11	33	30	46
Liberal Arts & Sciences	1,283	1,023	1,081	1,075	1,101
Nursing	97	92	109	82	110
Pharmacy	75	97	90	87	86
Social Work	---	---	---	---	---
Health Center ²	---	---	---	---	---
Total	2,397	2,925	3,081	2,878	2,889
Liberal Arts & Sciences ³					
Biobehavioral Sciences	127	134	105	104	114
Biological Sciences Group	98	144	149	132	115
Humanities	402	190	152	174	193
Math Sciences	80	34	48	54	48
Physical Sciences	44	68	50	67	62
Social Sciences	532	398	519	480	496
Other	---	55	58	64	73
Sub Total	1,283	1,023	1,081	1,075	1,101

OIR/MKA/eh
December, 1983

¹Adjusted to include degrees in Secondary Education for students with teaching concentration in College of Liberal Arts & Sciences fields. The appropriate College of Liberal Arts & Sciences fields are reduced accordingly.

²Biomedical Sciences, etc.

³College of Liberal Arts & Sciences

Biobehavioral Sciences-----	Biobehavioral Science, Linguistics, and Psychology
Biological Sciences Group--	Biological Science
Humanities-----	English, Germanic & Slavic Languages, Philosophy, and Romance & Classical Languages
Mathematical Sciences-----	Mathematics and Statistics
Physical Sciences-----	Chemistry, Geology & Geophysics, and Physics
Social Sciences-----	Anthropology, Communication Sciences, Economics, Geography, History, Journalism, Political Science, and Sociology
Other-----	Comparative Literature, Individualized Major, Marine Sciences, Medieval Studies, Urban Studies, and Area Studies

The University of Connecticut
Total University
Degrees Conferred
Selected Years 1970-1983

Masters

	Masters				
	1970	1980	1981	1982	1983
Agriculture & Natural Resources	17	51	29	39	22
Allied Health	---	---	---	6	4
Business Administration	150	349	354	353	341
Education	212	233	240	181	174
Engineering	116	64	73	67	57
Family Studies	26	13	6	8	29
Fine Arts	26	20	29	15	25
General Studies	---	---	---	---	---
Liberal Arts & Sciences	220	200	164	162	194
Nursing	---	31	28	31	32
Pharmacy	4	1	2	6	5
Social Work	77	134	201	176	199
Health Center ¹	---	2	9	7	5
Total	848	1,098	1,136	1,051	1,087
Liberal Arts & Sciences ²					
Biobehavioral Sciences	11	21	22	18	28
Biological Sciences Group	41	37	16	21	31
Humanities	50	21	15	19	21
Math Sciences	9	9	3	11	8
Physical Sciences	27	28	21	12	29
Social Sciences	82	83	84	67	69
Other	---	2	3	14	8
Sub-total	220	200	164	162	194

OIR/MKA/eh
December, 1983

¹Biomedical Sciences, etc.

²College of Liberal Arts & Sciences

Biobehavioral Sciences-----Biobehavioral Science, Linguistics, and Psychology
Biological Sciences Group-----Biological Science
Humanities-----English, Germanic & Slavic Languages, Philosophy, and Romance & Classical Languages
Mathematical Sciences-----Mathematics and Statistics
Physical Sciences-----Chemistry, Geology & Geophysics, and Physics
Social Sciences-----Anthropology, Communication Sciences, Economics, Geography, History, Journalism, Political Science, and Sociology
Other-----Comparative Literature, Individualized Major, Marine Sciences, Medieval Studies, Urban Studies, and Area Studies

The University of Connecticut
Total University
Degrees Conferred
Selected Years, 1970-1983

Doctoral

	Doctoral				
	1970	1980	1981	1982	1983
Agriculture & Natural Resources	5	3	7	6	3
Allied Health	---	---	---	---	---
Business Administration	---	---	---	---	---
Education	35	65	57	72	60
Engineering	20	15	18	6	16
Family Studies	---	2	1	1	1
Fine Arts	---	1	1	2	1
General Studies	---	---	---	---	---
Liberal Arts & Sciences	84	96	110	70	68
Nursing	---	---	---	---	---
Pharmacy	5	4	6	4	5
Social Work	---	---	---	---	---
Health Center ¹	---	8	5	7	5
	<u>149</u>	<u>194</u>	<u>205</u>	<u>168</u>	<u>159</u>
Liberal Arts & Sciences ²					
Biobehavioral Sciences	11	21	35	19	25
Biological Sciences Group	22	15	20	11	10
Humanities	5	16	11	9	5
Math Sciences	6	2	6	2	---
Physical Sciences	21	14	7	6	8
Social Sciences	19	27	28	19	15
Other	---	1	3	4	5
Sub-total	<u>84</u>	<u>96</u>	<u>110</u>	<u>70</u>	<u>68</u>
	Professional				
	1970	1980	1981	1982	1983
Law	97	210	168	179	187
Dentistry	---	43	44	44	41
Medicine	---	84	83	91	84
Total	<u>97</u>	<u>337</u>	<u>295</u>	<u>314</u>	<u>312</u>

OIR/MKA/eh
December, 1983

¹Biomedical Sciences, etc.

²College of Liberal Arts & Sciences

Biobehavioral Sciences-----Biobehavioral Science, Linguistics and Psychology

Biological Sciences Group--Biological Science

Humanities-----English, Germanic & Slavic Languages, Philosophy, and Romance & Classical Languages

Mathematical Sciences-----Mathematics and Statistics

Physical Sciences-----Chemistry, Geology & Geophysics, and Physics

Social Sciences-----Anthropology, Communication Sciences, Economics, Geography, History, Journalism, Political Science, and Sociology

Other-----Comparative Literature, Individualized Major, Marine Sciences, Medieval Studies, Urban Studies, and Area Studies

ALUMNI

The University of Connecticut
Alumni Geographic Distribution
As of June 30, 1983

Location	Alumni	Location	Alumni
Alabama	104	Montana	37
Alaska	64	Nebraska	61
Arizona	312	Nevada	43
Arkansas	52	New Hampshire	939
California	2,328	New Jersey	2,015
Colorado	339	New Mexico	100
Connecticut	51,073	New York	4,367
Delaware	136	North Carolina	445
District of Columbia	264	North Dakota	27
Florida	1,545	Ohio	596
Georgia	405	Oklahoma	81
Hawaii	83	Oregon	118
Idaho	34	Pennsylvania	1,270
Illinois	669	Rhode Island	1,303
Indiana	215	South Carolina	170
Iowa	90	South Dakota	21
Kansas	77	Tennessee	177
Kentucky	109	Texas	760
Louisiana	142	Utah	47
Maine	656	Vermont	651
Maryland	965	Virginia	1,105
Massachusetts	5,132	Washington	253
Michigan	455	West Virginia	67
Minnesota	179	Wisconsin	186
Mississippi	49	Wyoming	36
Missouri	177	Foreign	786
		Total	81,315

OIR/MKA/eh
December, 1983

Source: Alumni Office

The University of Connecticut
Number of Alumni and Alumni Support
1963-1983

Year	Number of Alumni	Number of Contributors	Total Alumni Support ¹
1963-64 ²	25,000 ³	2,240	\$ 25,290
1964-65	26,000 ³	2,755	37,522
1965-66	28,000 ³	3,510	60,385
1966-67	30,000 ³	4,510	88,220
1967-68	33,000 ³	5,368	96,672
1968-69	36,000 ³	5,251	114,097
1969-70	39,000 ³	5,392	128,016
1970-71	40,941	5,331	136,641
1971-72	43,892	5,032	137,342
1972-73	46,102	5,216	292,193
1973-74	50,619	5,602	224,695
1974-75	52,984	7,008	211,203
1975-76	57,024	6,655	264,806
1976-77	59,750	7,285	253,936
1977-78	62,969	8,342	350,004
1978-79	65,902	8,356	433,610
1979-80	70,220	8,537	500,277
1980-81	72,426	8,763	534,369
1981-82	76,927	9,469	764,498
1982-83	81,315	10,715	908,747

OIR/DIK/eh
December, 1983

¹Includes: Margin for Excellence, Special Alumni Gifts, School of Law Alumni, Insurance.

²The Alumni Program of Giving was instituted in 1963.
Prior to 1963 Alumni support totaled less than \$10,000.

³Estimate.

Source: Alumni Office

The University of Connecticut
Total Responses to Survey of 1983 Graduating Class
Demographic and General Questions

# of respondents	1,001	Entered University:	Primary reason for originally selecting the University:	In retrospect, primary reason should have been:
% of graduates ¹	35.5%	(a) as freshman 77.1%		
Respondents by sex:		(b) as transfer from:	(a) Variety of programs 8.0%	(a) Variety of programs 13.1%
Male	38.3%	Reg. Comm. College 2.7%	(b) Quality of programs 17.2%	(b) Quality of programs 50.2%
Female	61.7%	State Tech. College 1.0%	(c) Location 13.7%	(c) Location 4.1%
Respondents by age:		State College 2.3%	(d) Level of tuition & fees 37.4%	(d) Level of tuition & fees 14.1%
18 - 20	0.2%	Private instit. in Ct. 2.9%	(e) To live away from home 1.7%	(e) To live away from home 0.5%
21 - 24	85.6%	New England public & private 5.7%	(f) Relatives wanted me to attend 4.1%	(f) Relatives wanted me to attend 0.3%
25 - 34	10.8%	All Other 7.1%	(g) Specific program offered (____) 9.9%	(g) Specific program offered (____) 11.2%
35 - 49	2.7%	No response 1.9%	(h) Many friends attend 1.6%	(h) Many friends attend 0.2%
50 or over	0.7%	Transfer Sub-Total 23.6%	(i) Other (____) 5.6%	(i) Other (____) 5.1%
No response	---%	(c) No response ---%	(j) No response 0.9%	(j) No response 1.2%
By ethnic background:		Decided on major field:	Would you recommend The University of Connecticut to others planning to attend college?	
White	95.8%	(a) Before entering college 41.8%		
Hispanic		(b) As a freshman 10.6%		
Black		(c) As a sophomore 27.4%		
American Indian	2.9%	(d) As a junior 18.2%		
Asian-American		(e) As a senior 1.1%	Yes	94.5%
Non-resident alien	0.2%	(f) Don't remember 0.5%	No	4.6%
No response	1.1%	(g) No response 0.5%	No Response	0.9%
By location of initial registration				
Avery Point	4.2%			
Hartford	9.3%			
Stamford	5.3%			
Torrington	1.2%			
Waterbury	4.0%			
Regional Campus Sub-total	24.0%			
Storrs	76.0%			
No Response	---%			

OIR/FL/DLK/dlk
December, 1983

¹Percentage based on 2,817 graduates. The total number of bachelor's degrees was 2,889. For this study, graduates who received dual degrees were counted only once and graduates who could not be reached by mail were deleted from the total.

The University of Connecticut
Total Responses to Survey of 1983 Graduating Class
Employment

Currently employed:		Type of employer: (% based on 782 employed)	Where employed: (% based on 782 employed)
(a) Full-time	624 62.3%	Business	467 59.7%
(b) Part-time	158 15.8%	Education	58 7.4%
Sub-total	782 78.1%	Media	17 2.2%
Entered graduate or professional school full-time	132 13.2%	Self-employed	24 3.1%
Net (non-duplicating employed full-time or part-time or in graduate school full-time)	872 87.1%	Government-Local	9 1.2%
If not employed, are you looking for full-time work?		Government-State	24 3.1%
(a) Yes	95 9.5%	Government-Federal	9 1.2%
(b) No	13 1.3%	Military Service	8 1.0%
(c) No response	10 1.0%	Hospital or other health related; or non-profit	132 16.9%
Entered graduate or professional school part-time	71 7.1%	Agriculture	12 1.5%
Expect to enter graduate school at a later date	636 63.5%	Other	18 2.3%
Do you consider your position career-related? (responses of those employed full-time)		No response	4 0.4%
(a) Yes	85.1%		
(b) No	14.6%		
(c) No response	0.3%		
			Connecticut 580 74.2%
			Massachusetts 46 5.9%
			New York 34 4.3%
			California 13 1.7%
			New Jersey 13 1.7%
			Texas 5 0.6%
			Pennsylvania 7 0.9%
			Rhode Island 6 0.8%
			Maryland 8 1.0%
			New Hampshire 5 0.6%
			All other (29 states, foreign, and no state given) 65 8.3%

The University of Connecticut
Selected Responses to Survey of Graduates
1977-1983

Demographic and General Questions

	1977	1978	1979	1980	1981	1982	1983
# of respondents	1,300	1,195	1,072	1,037	1,066	1,075	1,001
% of graduates	40.6%	37.6%	35.7%	36.4%	35.5%	38.4%	35.5%
Respondents by sex:							
Male	48.0%	50.8%	49.3%	46.4%	43.2%	46.7%	38.3%
Female	51.8%	48.7%	50.7%	53.6%	56.8%	53.2%	61.7%
No response	0.2%	0.5%	---	---	---	---	---
Respondents by age:							
18-20	0.8%	0.5%	0.4%	0.3%	0.2%	0.3%	0.2%
21-24	87.3%	88.9%	88.2%	87.2%	86.3%	84.7%	85.6%
25-34	10.0%	8.9%	10.3%	10.5%	10.8%	11.6%	10.8%
35-49	1.1%	1.1%	1.0%	1.5%	2.1%	2.8%	2.7%
50 & over	*	0.2%	0.1%	0.4%	0.7%	0.6%	0.7%
No response	0.2%	0.5%	---	0.1%	---	0.1%	---
By ethnic background:							
White	96.3%	96.6%	97.8%	97.4%	97.4%	97.4%	95.8%
Hispanic	0.5%						
Black	1.0%	1.9%	1.1%	1.6%	1.7%	1.7%	2.9%
Asian-American	0.2%						
Non-resident alien	---	---	0.2%	0.1%	0.1%	0.2%	0.2%
No response	2.0%	1.5%	0.9%	1.0%	0.8%	0.7%	1.1%
By location of initial registration:							
Avery Point	2.6%	3.3%	4.9%	3.6%	3.0%	2.5%	4.2%
Hartford	10.1%	8.7%	8.4%	8.2%	8.2%	9.7%	9.3%
Stamford	5.3%	6.1%	6.8%	6.3%	7.0%	6.6%	5.3%
Torrington	1.7%	1.9%	2.3%	1.4%	2.0%	1.1%	1.2%
Waterbury	6.9%	7.2%	6.7%	5.9%	5.7%	5.3%	4.0%
Regional Campus Sub-total	26.6%	27.2%	29.1%	25.2%	25.9%	25.2%	24.0%
Storrs	72.7%	72.5%	70.6%	74.7%	74.1%	74.7%	76.0%
No Response	0.7%	0.3%	0.3%	---	---	0.1%	---
Entered University:							
(a) as freshman	75.2%	82.5%	78.6%	79.1%	76.7%	77.3%	77.1%
(b) as transfer from:							
Regional Community College	4.5%	3.3%	3.6%	3.4%	3.8%	4.1%	2.7%
State Technical College	0.8%	0.5%	0.8%	1.1%	0.9%	0.8%	1.0%
State College	3.4%	1.8%	3.7%	3.7%	3.8%	3.0%	2.3%
Private institution in Ct.	2.2%	1.8%	2.2%	1.7%	2.0%	3.0%	2.9%
New England public & private	2.1%	3.5%	4.3%	4.8%	3.7%	4.4%	5.7%
All other	10.4%	6.0%	6.6%	5.9%	7.9%	6.0%	7.1%
No response	*	0.3%	0.1%	0.3%	1.3%	1.2%	1.9%
Transfer sub-total	23.4%	17.2%	21.3%	20.8%	23.4%	22.5%	23.6%
(c) No response	1.4%	0.3%	0.1%	0.1%	---	0.2%	---

*Not used that year.

(continued)

The University of Connecticut
Selected Responses to Survey of Graduates
1977-1983

Demographic and General Questions

	1977	1978	1979	1980	1981	1982	1983
Decided on major field:							
(a) Before entering college	36.5%	39.1%	39.2%	41.5%	40.5%	39.5%	41.8%
(b) As a freshman	12.8%	14.1%	11.1%	12.8%	10.8%	11.3%	10.6%
(c) As a sophomore	33.2%	28.4%	27.9%	27.7%	28.9%	27.9%	27.4%
(d) As a junior	14.8%	15.0%	17.8%	15.1%	16.9%	18.7%	18.2%
(e) As a senior	1.6%	2.3%	2.0%	2.2%	1.6%	1.8%	1.1%
(f) Don't remember	0.6%	0.5%	0.8%	0.4%	0.4%	0.6%	0.5%
(g) No response	0.5%	0.6%	1.2%	0.3%	0.9%	0.3%	0.5%
Primary reason for originally selecting the University:							
(a) Variety of programs	13.8%	9.5%	8.2%	8.6%	7.8%	9.5%	8.0%
(b) Quality of programs	20.5%	19.0%	14.3%	15.7%	15.6%	14.5%	17.2%
(c) Location	16.0%	15.0%	15.8%	17.4%	17.0%	17.6%	13.7%
(d) Level of tuition & fees	36.0%	29.1%	33.5%	34.2%	33.5%	35.3%	37.4%
(e) To live away from home	2.2%	1.4%	1.2%	1.2%	1.2%	0.9%	1.7%
(f) Relatives wanted me to	2.4%	2.6%	3.5%	2.5%	2.9%	2.8%	4.1%
(g) Specific program offered	*	13.1%	12.2%	12.0%	14.1%	11.3%	9.9%
(h) Many friends attending	0.8%	1.0%	0.9%	1.5%	0.8%	0.9%	1.6%
(i) Other	7.2%	3.9%	5.0%	5.8%	5.6%	6.0%	5.6%
(j) No response	0.9%	5.4%	5.4%	1.1%	1.5%	1.3%	0.9%
In retrospect, primary reason should have been:							
(a) Variety of programs	17.5%	12.0%	14.7%	14.7%	14.3%	12.2%	13.1%
(b) Quality of programs	43.8%	41.5%	41.7%	46.6%	49.1%	50.2%	50.2%
(c) Location	6.7%	5.7%	3.3%	4.7%	3.4%	4.7%	4.1%
(d) Level of tuition & fees	21.5%	15.8%	16.0%	14.7%	14.4%	15.6%	14.1%
(e) To live away from home	1.4%	1.3%	0.8%	0.4%	0.8%	0.5%	0.5%
(f) Relatives wanted me to	0.2%	0.1%	0.2%	0.3%	0.2%	0.3%	0.3%
(g) Specific programs offered	*	14.2%	13.1%	12.7%	12.0%	10.4%	11.2%
(h) Many friends attending	0.1%	0.1%	0.1%	0.4%	0.1%	0.3%	0.2%
(i) Other	5.2%	2.7%	3.6%	3.7%	3.8%	4.2%	5.1%
(j) No response	3.8%	6.6%	6.5%	1.9%	2.2%	1.6%	1.2%
Would you recommend Univ. of Ct. to others planning to attend college?							
Yes	87.1%	90.1%	91.9%	92.0%	92.8%	94.0%	94.5%
No	6.8%	7.8%	5.5%	6.6%	5.4%	4.7%	4.6%
No response	6.1%	2.1%	2.6%	1.4%	1.8%	1.3%	0.9%

OIR/DLK/dlk
December, 1983

*Not used that year.

The University of Connecticut
Selected Responses to Survey of Graduates
1977-1983
Employment

	1977	1978	1979	1980	1981	1982	1983
Currently employed:							
(a) full-time	805 61.9%	803 67.2%	741 69.1%	703 67.8%	724 67.9%	703 65.4%	624 62.3%
(b) part-time	215 16.5%	124 10.4%	120 11.2%	130 12.5%	131 12.2%	153 14.2%	158 15.8%
Sub-total	1,020 78.4%	927 77.7%	861 80.3%	833 80.3%	855 80.2%	856 79.6%	782 78.1%
Entered graduate or professional school full-time	233 17.9%	167 14.0%	144 13.4%	167 16.1%	142 13.3%	122 11.3%	132 13.2%
Net (non-duplicating) employed full-time or part-time or in graduate school full-time	* *	1,043 87.3%	957 89.3%	938 90.5%	951 89.2%	931 86.6%	872 87.1%
If not employed, are you looking for full-time work?¹							
(a) Yes	* *	112 9.4%	88 8.2%	82 7.9%	87 8.2%	112 10.4%	95 9.5%
(b) No	* *	17 1.4%	27 2.5%	10 1.0%	11 1.0%	15 1.4%	13 1.3%
Entered graduate or professional school part-time	85 6.5%	114 9.5%	94 8.8%	79 7.6%	85 8.0%	81 7.5%	71 7.1%
Expect to attend graduate or professional school later	743 57.2%	713 59.7%	678 62.2%	675 65.1%	698 65.5%	727 67.6%	636 63.5%
Total number employed:	1,020	927	861	833	855	856	782
Type of employer:							
Business	490 48.0%	437 47.1%	459 53.3%	419 50.3%	459 53.7%	475 55.5%	467 59.7%
Education	152 14.9%	114 12.3%	76 8.8%	92 11.0%	97 11.3%	89 10.4%	58 7.4%
Media	10 1.0%	15 1.6%	15 1.7%	14 1.7%	19 2.2%	15 1.8%	17 2.2%
Self-employed	6 0.6%	22 2.4%	22 2.6%	9 1.1%	20 2.3%	30 3.5%	24 3.1%

*Not used that year.

¹Responses tabulated for those not employed and not in Graduate School full-time.

(continued)

	1977	1978	1979	1980	1981	1982	1983
Type of employer: (continued) (% based on the total number employed)							
Government - local	28 2.7%	10 1.1%	12 1.4%	8 1.0%	15 1.8%	14 1.6%	9 1.2%
Government - state	35 3.4%	57 6.1%	38 4.4%	41 4.9%	26 3.0%	23 2.7%	24 3.1%
Government - federal	15 1.5%	24 2.6%	26 3.0%	22 2.6%	15 1.8%	20 2.3%	9 1.2%
Military Service	15 1.5%	16 1.7%	13 1.5%	10 1.2%	11 1.3%	14 1.6%	8 1.0%
Hospital or other Health related; or non-profit	179 17.6%	151 16.3%	136 15.8%	131 15.7%	147 17.2%	127 14.8%	132 16.9%
Agriculture	* *	* *	18 2.1%	13 1.6%	15 1.8%	18 2.1%	12 1.5%
Other	54 5.3%	74 8.0%	43 5.0%	58 7.0%	29 3.4%	28 3.3%	18 2.3%
No response	36 3.5%	7 0.8%	3 0.4%	16 1.9%	2 0.2%	3 0.4%	4 0.4%
Where employed: (% based on the total number employed)							
Connecticut	693 67.9%	622 67.1%	572 66.4%	564 67.7%	569 66.5%	640 74.8%	580 74.2%
Massachusetts	63 6.2%	61 6.6%	70 8.1%	59 7.1%	54 6.3%	43 5.0%	46 5.9%
New York	47 4.6%	42 4.5%	52 6.0%	42 5.0%	58 6.8%	39 4.6%	34 4.3%
New Jersey	23 2.2%	16 1.7%	16 1.9%	17 2.0%	25 2.9%	13 1.5%	13 1.7%
Texas	8 0.8%	16 1.7%	13 1.5%	10 1.2%	11 1.3%	7 0.8%	5 0.6%
California	10 1.0%	16 1.7%	19 2.2%	19 2.3%	19 2.2%	13 1.5%	13 1.7%
Other states and foreign countries	176 17.3%	154 16.7%	119 12.9%	122 14.7%	109 12.7%	101 11.8%	91 11.6%

OIR/DLK/dlk
 November 1983
 *Not used that year.

COURSES

The University of Connecticut
Storrs Campus
Course Enrollment Matrix
By School/Department Offering Course and by School of Undergraduate Student Major
Fall 1983

School/ Department	Total Course Enroll- ments	Coll. of Agric.	Allied Health	CLAS	Bus.	Educ.	Engr.	Fine Arts	Grad School	Family Stud.	Nurs.	Phar.	Gen. of Stud.	School of Ag. RH	No Sch.
Baileliffe Hicks															
Aq. Economics & Rural Sociology	15	-	-	-	-	-	-	-	-	-	-	-	-	15	-
Aq. Engineering	7	-	-	-	-	-	-	-	-	-	-	-	-	7	-
Animal Indus.	109	-	-	-	-	-	-	-	-	-	-	-	-	108	1
English	25	-	-	-	-	-	-	-	-	-	-	-	-	25	-
Agriculture & Natural Res.	20	-	-	-	-	-	-	-	-	-	-	-	-	20	-
Pathobiology	16	-	-	-	-	-	-	-	-	-	-	-	-	16	-
Plant Science	208	-	-	-	-	-	1	-	-	-	-	-	-	203	4
Total	400	-	-	-	-	-	1	-	-	-	-	-	-	394	5
Agriculture & Natural Resources															
Aq. Economics & Rural Sociology	140	95	-	14	-	7	-	-	21	-	-	-	1	-	2
Aq. Engineering	14	8	-	6	-	-	-	-	-	-	-	-	-	-	-
Animal Indus.	477	368	-	22	8	4	7	1	53	1	1	1	-	-	11
Aq. & Natural Resources	122	99	-	11	2	1	-	-	1	1	4	-	-	-	3
Nutritional Sci.	475	104	56	53	10	23	2	1	45	8	104	7	-	-	22
Pathobiology	215	156	-	17	-	1	-	-	38	-	-	-	-	-	3
Plant Science	434	333	2	14	4	3	2	-	30	10	2	7	2	-	25
Renewable Nat. Resources	150	116	-	20	1	1	3	-	6	-	-	-	1	-	2
Total	2,027	1,279	58	157	25	40	14	2	194	20	151	15	4	-	68
Allied Health															
Allied Health Clinical	269	4	239	2	-	-	-	-	15	1	1	-	-	-	7
Dietetics	51	2	36	-	-	-	-	-	5	-	-	-	-	-	8
Health Sciences	162	-	153	2	-	3	-	-	3	-	-	1	-	-	-
Medical Tech.	103	-	94	-	-	-	-	-	4	-	-	-	-	-	5
Physical Therapy	364	-	344	6	-	-	-	-	4	-	1	-	-	-	9
Total	949	6	866	10	-	3	-	-	31	1	2	1	-	-	29

(continued)

The University of Connecticut
Storrs Campus
Course Enrollment Matrix
By School/Department Offering Course and by School of Undergraduate Student Major
Fall 1983

School/ Department	Total Course Enroll- ments	Coll. of Agric.	Allied Health	CLAS	Bus.	Educ.	Engr.	Fine Arts	Grad School	Family Stud.	Nurs.	Phar.	Gen. Stud.	School of Ag. RH	No Sch.
Business Administration															
Accounting	1,213	4	-	66	1,039	4	3	1	81	1	-	-	-	-	14
Business Environ. & Policy	1,410	12	1	142	1,060	9	4	5	154	7	-	2	3	-	11
Finance	1,057	3	-	179	787	-	3	-	71	2	-	-	1	-	11
Information Management	705	2	1	23	434	-	5	-	232	1	-	1	-	-	6
Management & Organization	648	4	-	51	451	2	-	1	110	19	1	-	2	-	7
Marketing	1,095	7	-	139	806	29	-	1	78	30	-	1	1	-	3
Total	6,128	32	2	600	4,577	44	15	8	726	60	1	4	7	-	52
Education															
Educ. Admin.	184	-	-	4	-	-	-	-	135	-	-	-	-	-	45
Educ. Psychology	1,124	22	9	150	41	229	4	10	508	27	7	3	-	-	114
Educ. Sport & Leisure Studies	1,137	18	59	248	133	412	49	12	98	36	12	24	3	1	32
Educ. Studies & Inst. Media	234	-	2	33	11	55	1	7	93	3	-	-	-	-	29
Curriculum & Instruction	682	-	-	42	8	308	-	12	243	2	-	-	-	-	67
General	8	-	-	-	-	8	-	-	-	-	-	-	-	-	-
Higher, Tech., & Adult	150	-	-	-	-	4	-	-	122	-	-	-	-	-	24
Total	3,519	40	70	477	193	1,016	54	41	1,199	68	19	27	3	1	311
Engineering															
Chem. Engr.	551	-	-	19	-	-	387	-	135	-	-	-	-	-	10
Civil Engr.	938	18	-	127	2	-	676	1	64	-	1	1	-	-	48
Computer Science	1,328	18	1	191	92	3	887	5	91	2	1	-	-	-	37
Elec. Engr. & Comp. Sci.	1,023	3	-	50	-	-	841	-	97	-	-	-	-	-	32
Engineering	222	4	-	65	3	-	135	-	14	-	-	-	-	-	1
Mech. Engr.	776	2	-	26	-	-	658	-	59	-	-	-	-	-	31
Mech. Tech.	26	-	-	-	-	-	25	-	-	-	-	-	-	-	1
Metallurgy	377	-	-	30	-	-	301	-	40	-	-	-	-	-	6
Total	5,241	45	1	508	97	3	3,910	6	500	2	2	1	-	-	166

(continued)

The University of Connecticut
Storrs Campus
Course Enrollment Matrix
By School/Department Offering Course and by School of Undergraduate Student Major
Fall 1983

School/ Department	Total Course Enroll- ments	Coll. of Agric.	Allied Health	CLAS	Bus.	Educ.	Engr.	Fine Arts	Grad School	Family Stud.	Nurs.	Phar.	Gen. Stud.	School of Ag. RH	No Sch.
Family Studies															
Design & Resource Mngt.	1,145	25	-	204	248	12	52	19	15	502	37	4	1	-	26
Human Dev. & Family Rel.	1,393	25	13	340	169	51	20	9	124	438	163	5	10	-	26
Total	<u>2,538</u>	<u>50</u>	<u>13</u>	<u>544</u>	<u>417</u>	<u>63</u>	<u>72</u>	<u>28</u>	<u>139</u>	<u>940</u>	<u>200</u>	<u>9</u>	<u>11</u>	<u>-</u>	<u>52</u>
Fine Arts															
Art	1,680	31	4	412	36	7	47	1,045	5	42	16	7	5	-	23
Dramatic Arts	1,625	23	20	531	140	17	87	587	145	26	28	7	2	-	12
Fine Arts	99	2	14	46	15	1	11	3	-	5	1	-	-	-	1
Music	1,684	19	18	384	95	114	93	751	131	15	16	12	-	-	36
Total	<u>5,088</u>	<u>75</u>	<u>56</u>	<u>1,373</u>	<u>286</u>	<u>139</u>	<u>238</u>	<u>2,386</u>	<u>281</u>	<u>88</u>	<u>61</u>	<u>26</u>	<u>7</u>	<u>-</u>	<u>72</u>
General Studies															
Total	10	-	-	-	-	-	-	-	-	-	-	-	10	-	-
Graduate School															
Total	1,077	-	-	-	-	-	-	-	1,077	-	-	-	-	-	-
Liberal Arts & Sciences															
Biochem. Sci.	60	1	-	4	-	-	-	-	46	-	-	-	-	-	9
Linguistics	495	8	8	262	89	5	29	14	67	8	1	2	-	-	2
Psychology	2,900	69	50	1,578	486	106	27	72	254	74	116	7	4	-	57
Sub-total	<u>3,455</u>	<u>78</u>	<u>58</u>	<u>1,844</u>	<u>575</u>	<u>111</u>	<u>56</u>	<u>86</u>	<u>367</u>	<u>82</u>	<u>117</u>	<u>9</u>	<u>4</u>	<u>-</u>	<u>68</u>
Biological Sci.	2,425	315	137	1,147	10	56	16	14	276	14	280	95	3	-	62

(continued)

The University of Connecticut
Storrs Campus
Course Enrollment Matrix
By School/Department Offering Course and by School of Undergraduate Student Major
Fall 1983

School/ Department	Total Course Enroll- ments	Coll. of Agric.	Allied Health	CLAS	Bus.	Educ.	Engr.	Fine Arts	Grad School	Family Stud.	Nurs.	Phar.	Gen. of Stud.	School of Ag. RM	No Sch.
Liberal Arts & Sci. (cont.)															
Arabic	13	1	-	7	2	-	1	1	-	-	-	-	-	-	1
Classics	154	1	2	117	7	-	7	2	7	4	3	-	-	-	4
Chinese	16	-	-	11	1	-	1	-	1	1	-	-	-	-	1
Critical Languages Prog.	47	2	2	28	8	-	-	3	2	-	1	-	-	-	1
English	4,339	112	66	2,707	474	96	319	157	101	70	91	75	8	-	63
French	497	12	4	327	65	5	24	14	14	7	9	4	-	-	12
German	289	6	4	211	23	1	10	5	17	6	1	2	-	-	3
Hebrew	314	4	-	137	102	5	31	5	-	20	5	5	-	-	-
Italian	212	4	5	103	50	-	9	5	10	8	14	2	-	-	2
Modern Greek	12	-	-	10	1	-	-	-	-	-	-	-	-	-	1
Philosophy	1,340	26	19	832	184	7	86	60	43	23	27	19	-	-	14
Polish	24	1	-	7	7	-	4	1	2	2	-	-	-	-	-
Portuguese	19	-	-	14	2	-	1	-	-	-	-	1	-	-	1
Romance Lang.	8	-	-	1	-	-	-	-	7	-	-	-	-	-	-
Russian	101	1	-	84	8	-	3	-	1	1	-	1	-	-	2
Spanish	719	11	18	481	89	12	21	3	34	12	15	10	-	-	13
Sub-total	8,104	181	120	5,077	1,023	126	517	256	239	154	166	119	8	-	118
Mathematics	4,258	146	59	2,283	541	44	858	31	89	18	26	73	-	-	90
Statistics	1,051	54	9	506	217	6	101	7	113	7	2	4	1	-	24
Sub-total	5,309	200	68	2,789	758	50	959	38	202	25	28	77	1	-	114
Chemistry	2,360	180	144	1,025	15	26	498	4	161	7	133	121	2	-	44
Geology & Geophysics	357	18	1	219	12	4	10	19	51	9	-	-	-	-	14
Physics	1,234	32	43	657	10	11	316	10	73	5	3	42	-	-	32
Sub-total	3,951	230	188	1,901	37	41	824	33	285	21	136	163	2	-	90
Anthropology	946	24	17	463	203	8	57	21	88	19	31	5	-	-	10
Communication Sciences	1,487	14	10	827	194	10	44	23	242	24	67	7	5	-	20
Economics	2,544	78	12	1,551	457	18	167	16	121	29	9	56	1	-	29
Geography	874	50	7	463	190	3	109	15	3	5	-	10	1	-	18
History	1,626	16	11	1,202	106	30	56	37	100	15	7	5	8	1	32
Journalism	356	3	2	248	61	4	14	8	1	7	1	1	6	-	-
Political Sci.	2,108	13	6	1,449	348	12	67	9	168	3	2	-	1	-	30
Sociology	2,191	27	40	1,314	354	54	93	34	41	79	66	62	4	-	23
Sub-total	12,132	225	105	7,517	1,913	139	607	163	764	181	183	146	26	1	162

(continued)

The University of Connecticut
Storrs Campus
Course Enrollment Matrix
By School/Department Offering Course and by School of Undergraduate Student Major
Fall 1983

School/ Department	Total Course Enroll- ments	Coll. of Agric.	Allied Health	CLAS	Bus.	Educ.	Engr.	Fine Arts	Grad School	Family Stud.	Nurs.	Phar.	School Gen. of Ag. Stud. RH	No Sch.
Liberal Arts & Sci. (GODf.)														
Comp. Lit.	13	-	-	1	-	-	-	-	11	-	-	-	-	1
Co-op Ed Work Placement	58	1	-	6	21	-	22	-	2	2	-	-	3	1
Inter-Dept.	419	3	102	138	36	1	2	2	7	7	112	2	4	3
Jr. Year Abroad	123	1	-	78	21	2	7	4	-	1	-	-	-	9
Latin Amer. Studies	12	1	-	7	-	-	-	-	3	-	-	-	-	1
Science	11	1	-	5	1	-	1	1	-	-	-	-	-	2
Urban Studies	17	-	-	16	1	-	-	-	-	-	-	-	-	-
Sub-total	653	7	102	251	80	3	32	7	23	10	112	2	7	17
Air Force - Aerospace	105	-	-	42	6	-	30	2	-	-	4	1	-	20
Military Sci.	137	5	2	68	22	3	12	3	1	2	3	5	1	10
Sub-total	242	5	2	110	28	3	42	5	1	2	7	6	1	30
Marine Sciences	46	2	-	11	1	-	7	3	14	-	-	-	-	8
Total-Liberal Arts & Sci.	36,317	1,243	780	20,647	4,425	529	3,060	605	2,171	489	1,029	617	51	669
Nursing														
Total	824	2	-	12	4	-	2	1	189	3	594	-	-	17
Pharmacy														
Total	1,331	1	-	12	-	-	-	-	100	1	155	1,032	-	30
Total University (Storrs)	65,449	2,773	1,846	24,340	10,024	1,837	7,366	3,077	6,607	1,672	2,214	1,732	93	1,471

The University of Connecticut
Storrs Campus
Summary - Undergraduate Student Course Enrollments¹
Fall 1983

Courses Offered by	# & % of total Under- graduate student course enrollments		# & % of these course enrollments by majors in this school		# & % of these course enrollments by majors in other schools	
	#	%	#	%	#	%
Ratcliffe Hicks	395	0.6	394	99.7	1	0.3
Agriculture & Natural Res.	1,765	3.1	1,279	72.5	486	27.5
Allied Health	889	1.5	866	97.4	23	2.6
Business	5,350	9.3	4,577	85.6	773	14.5
Education	2,009	3.5	1,016	50.6	993	49.4
Engineering	4,575	8.0	3,910	85.5	665	14.5
Family Studies	2,347	4.1	940	40.1	1,407	59.9
Fine Arts	4,735	8.3	2,386	50.4	2,349	49.6
Liberal Arts & Sciences	33,477	58.4	20,647	61.7	12,830	38.3
Nursing	618	1.1	594	96.1	24	3.9
Pharmacy	1,201	2.1	1,032	85.9	169	14.1
Total	57,361	100.0	37,641	----	19,720	----

OIR/EH/dlk
December, 1983

¹ Excludes graduate and unclassified students.

STAFF

The University of Connecticut
Total University
Staff Census
Fall 1983

	University ¹	Health Center ²	Total
I. Full-time Employees			
Faculty-All Ranks	1,208	336 ³	1,544
Other Professionals	1,060	1,259	2,319
Graduate Assistants	446	---	446
Classified Staff	1,676	815	2,491
Total	4,390	2,410	6,800

II. Full-Time and Part-time Employees by Manpower Resource Category and Sex										
Manpower Resource Category	University ¹							Health Center ²		
	Full-time			Part-time			FI & PT	Full-time		
	Male	Female	Total	Male	Female	Total	Total	Male	Female	Total
Professional:										
Executive, Administrative, Managerial	85	22	107	1	---	1	108	48	6	54
Instruction/Research	971	237	1,208	18	23	41	1,249	319 ⁴	178 ⁴	497 ⁴
Specialist/Support	434	519	953	39	76	115	1,068	356	688	1,044
Sub-total	1,490	778	2,268	58	99	157	2,425	723	872	1,595
Other support (technical; office; crafts & trades, and service)	647	1,029	1,676	18	117	135	1,811	293	522	815
Graduate Assistants	291	155	446	242	188	430	876	---	---	---
Grand Total	2,428	1,962	4,390	318	404	722	5,112	1,016	1,394	2,410

OIR/PJR/dlk
February, 1984

¹ On regular payroll as of November, 1983.

² As of October, 1983.

³ Includes Vice President, Deans, Associate Vice President.

⁴ Health Center instruction/research figures include research assistants and therefore are not comparable to the University figures.

The University of Connecticut
(excluding health center)
Minority Staff Census¹
All Employees by Sex and Ethnicity²
Fall 1982

	Black		Hispanic		Asian- American		American Indian		Sub-total Minorities		All Other		Total		Total
	M	F	M	F	M	F	M	F	M	F	M	F	M	F	
Executive/Administrative/ Managerial Employees ³	10	4	-	-	1	1	-	-	11	5	90	29	101	34	135
Faculty	16	9	13	5	36	4	-	-	65	18	934	234	999	252	1,251
Professional Non-Faculty ⁴	18	20	5	7	10	12	-	-	33	39	422	577	455	616	1,071
Support:															
Secretarial/Clerical	-	11	-	6	-	-	-	2	-	19	17	660	17	679	696
Technical/Para- Professional	2	7	-	4	-	-	-	-	2	11	44	27	46	38	84
Skilled Crafts	1	-	-	-	-	-	-	-	1	-	114	-	115	-	115
Service/Maintenance	20	3	7	2	-	3	2	2	29	10	454	408	483	418	901
Total	67	54	25	24	47	20	2	4	141	102	2,075	1,935	2,216	2,037	4,253

OIR/PJR/eh
February, 1984

¹Based on payroll titles; graduate assistants not included. Data are for full-time and part-time employees.

²Data compiled by the Office of Affirmative Action Programs, adjusted by the Office of Institutional Research to make the figures comparable to prior years of OIR data.

³Includes assistant and associate librarians, counted as professional non-faculty in CIR Reports.

⁴Includes some staff with supervisory responsibilities.

The University of Connecticut
Storrs and Regional Campuses
Number of Full-time Teaching Faculty, by School/College¹
Selected Years, Fall 1960 to Fall 1983

Storrs Campus						
School/College	1960	1970	1980	1981	1982	1983
Agriculture & Natural Resources	80	100	72	77	74	74
Allied Health (Physical Therapy)	7	11	17	16	15	16
Business Administration ²	27	53	79	75	78	74
Education (& Physical Education)	41	118	73	73	72	70
Engineering	36	81	90	93	90	90
Family Studies	21	31	26	26	24	23
Fine Arts	--	64	66	65	66	66
Liberal Arts & Sciences	234	492	492	489	479	483 ³
Nursing	16	45	45	45	39	36
Pharmacy	6	20	31	31	29	29
	---	---	---	---	---	---
Total	466	1,015	951	990	966	961

Storrs and Regional Campuses						
School/College	1960	1970	1980	1981	1982	1983
Agriculture & Natural Resources	80	100	72	77	74	74
Allied Health (Physical Therapy)	7	11	17	16	15	16
Business Administration	28	53	79	75	78	74
Education (& Physical Education)	43	119	74	74	73	71
Engineering	38	86	96	100	95	96
Family Studies	22	32	27	27	25	23
Fine Arts	--	73	75	74	75	74
Liberal Arts & Sciences	278	592	586	583	575	579
Nursing	16	45	45	45	39	36
Pharmacy	6	20	31	31	29	29
	---	---	---	---	---	---
Total	518	1,131	1,102	1,102	1,078	1,072

OIR/PJR/eh
February, 1984

¹Does not include School of Social Work and School of Law.

²Includes all MEA Programs.

³Includes 8 speech pathologists/audiologists, not included in prior year.

The University of Connecticut
(excluding Health Center)
Tenure Status of Full-time Teaching Faculty, by School or College Affiliation
Selected Years 1970-71 to 1983-84¹

College/School	1970-71			1980-81			1981-82			1982-83			1983-84		
	N	n	% ten	N	n	% ten	N	n	% ten	N	n	% ten	N	n	% ten
Agric. & Natural Resources	100	73	73.0	72	56	77.8	77	57	74.0	74	58	78.4	74	61	82.4
Allied Health ²	11	8	72.7	17	7	41.2	16	6	37.5	15	8	53.3	16	8	50.0
Business Admin.	53	28	52.8	79	39	49.4	75	40	53.3	78	42	53.8	74	40	54.1
Education ³	118	51	43.2	73	62	84.9	73	61	83.6	72	62	86.1	70	62	88.6
Engineering	81	46	56.8	90	57	63.3	93	61	65.6	90	60	66.7	90	57	63.3
Family Studies	31	13	41.9	26	15	57.7	26	15	57.7	24	16	66.7	23	15	65.2
Fine Arts	64	35	54.7	66	50	75.8	65	50	76.9	66	51	77.3	66	51	77.3
Liberal Arts & Sciences	492	246	50.0	492	390	79.3	489	397	81.2	479	400	83.5	483	395	81.8
Nursing	45	7	15.6	45	22	48.9	45	22	48.9	39	20	51.3	36	16	44.4
Pharmacy	20	6	30.0	31	16	51.6	31	15	48.4	29	15	51.7	29	14	48.3
Law	34	16	47.1	31	21	67.7	30	20	66.7	30	19	63.3	33	24	72.7
Social Work	37	16	43.2	41	24	58.5	39	25	64.1	33	22	66.7	28	23	82.1
University of Connecticut at:															
Avery Point	19	2	10.5	16	12	75.0	15	13	86.7	15	13	86.7	14	12	85.7
Hartford	36	13	36.1	35	30	85.7	37	31	83.8	35	31	88.6	36	32	88.9
Stamford	23	14	60.9	25	12	48.0	26	15	57.7	28	16	57.1	29	19	65.5
Torrington	10	--	--	10	6	60.0	9	6	66.7	9	6	66.7	7	5	71.4
Waterbury	28	14	50.0	25	22	88.0	25	20	80.0	25	19	76.0	25	19	76.0
Total (5 Ranks)	1,202	588	48.9	1,174	841	71.6	1,171	854	72.9	1,141	858	75.2	1,133	853	75.3

OIR/PJR/eh
February, 1984

N = Total number
n ten = number tenured
% ten = percent tenured

¹Faculty in centers and institutes are counted according to their school or college affiliation.

²Former School of Physical Therapy included in all years.

³Former School of Physical Education included in all years. For 1970-71, Intercollegiate Athletics faculty teaching in Physical Education are also included.

The University of Connecticut
(excluding Health Center)
Departmental Affiliation, Sex, and Tenure Status of the Full-time Teaching Faculty
1983-84

College/School-Department ¹	Male		Female		Total	
	N	n ten	N	n ten	N	n ten
Agriculture & Natural Resources:						
Dean's Office	2	2	--	--	2	2
Agricultural Economics & Rural Sociology	9	7	2	1	11	8
Agricultural Engineering	3	3	--	--	3	3
Animal Genetics	4	3	1	--	5	3
Animal Industries	9	7	1	--	10	7
Nutritional Sciences	7	6	5	2	12	8
Pathobiology	9	9	1	1	10	10
Plant Science	17	16	--	--	17	16
Renewable Natural Resources	4	4	--	--	4	4
Sub-total, Agriculture & Natural Resources	64	57	10	4	74	61
Allied Health	6	4	10	4	16	8
Business Administration:						
Accounting	11	5	2	1	13	6
Business Environment & Policy	11	5	2	2	13	7
Finance	11	5	--	--	11	5
Information Management	6	3	--	--	6	3
Management & Organization	8	7	--	--	8	7
Marketing	7	6	2	--	9	6
MBA Program - Hartford	1	1	--	--	1	1
MBA Program - Stamford	11	5	2	--	13	5
Sub-total, Business Administration	66	37	8	3	74	40
Education:						
Curriculum & Instruction	16	16	3	2	19	18
Educational Administration	5	5	--	--	5	5
Educational Psychology	18	14	2	2	20	16
Educational Studies & Instructional Media	5	5	2	1	7	6
Higher, Technical & Adult Education	9	8	2	1	11	9
Sport & Leisure Studies	7	7	1	1	8	8
Sub-total, Education	60	55	10	7	70	62
Engineering:						
Chemical Engineering	12	8	--	--	12	8
Civil Engineering	19	13	--	--	19	13
Computer Science	12	4	2	--	14	4
Electrical Engineering	16	9	1	1	17	10
Mechanical Engineering	18	13	--	--	18	13
Metallurgy	10	9	--	--	10	9
Sub-total, Engineering	87	56	3	1	90	57
Family Studies	12	10	11	5	23	15
Fine Arts:						
Art	19	18	6	3	25	21
Dramatic Arts	13	10	4	4	17	14
Music	21	15	3	1	24	16
Sub-total, Fine Arts	53	43	13	8	66	51

(continued)

N = total
n ten = number tenured

¹Faculty on leave without pay are omitted. Faculty in Centers and Institutes are counted according to departmental affiliation.

The University of Connecticut
(excluding Health Center)
Departmental Affiliation, Sex, and Tenure Status of the Full-time Teaching Faculty
1983-84

College/School-Department ¹	Male		Female		Total	
	N	n ten	N	n ten	N	n ten
Liberal Arts & Sciences:						
Anthropology	12	11	--	--	12	11
Biobehavioral Sciences	10	7	1	1	11	8
Biological Sciences	61	49	8	4	69	53
Chemistry	27	18	4	1	31	19
Communication Sciences ²	13	11	15	4	28	15
Economics	21	14	1	1	22	15
English	39	37	8	7	47	44
Foreign Languages	32	30	6	3	38	33
Geography	6	2	1	1	7	3
Geology & Geophysics	9	8	--	--	9	8
History	26	25	3	3	29	28
Journalism	2	1	1	--	3	1
Linguistics	5	4	1	1	6	5
Marine Sciences	10	8	1	1	11	9
Mathematics	27	24	1	1	28	25
Philosophy	12	12	1	--	13	12
Physics	26	22	1	1	27	23
Political Science	23	20	3	2	26	22
Psychology	32	31	3	3	35	34
Sociology	19	18	3	2	22	20
Statistics	8	7	1	--	9	7
Sub-total, Liberal Arts & Sciences	420	359	63	36	483	395
Nursing	1	--	35	16	36	16
Pharmacy	28	13	1	1	29	14
Law	27	21	6	3	33	24
Social Work	14	14	14	9	28	23
University of Connecticut at:						
Avery Point	10	8	4	4	14	12
Hartford	23	20	13	12	36	32
Stamford	18	10	11	9	29	19
Torrington	6	5	1	--	7	5
Waterbury	18	14	7	5	25	19
Sub-total, Regional Campuses	75	57	36	30	111	87
Grand Total	913	726	220	127	1,133	853
Percent Tenured		79.5%		57.7%		75.3%

OIR/PJR/eh
February, 1984

N = total
n ten = number tenured

¹Faculty on leave without pay are omitted. Faculty in Centers and Institutes are counted according to departmental affiliation.

²Includes 8 speech pathologists/audiologists.

The University of Connecticut
(excluding Health Center)
Tenure Status of the Full-time Teaching Faculty, by Rank
Selected Years, 1970-71 to 1983-84

Rank	1970-71			1980-81			1981-82			1982-83			1983-84		
	N	n ten	% ten	N	n ten	% ten	N	n ten	% ten	N	n ten	% ten	N	n ten	% ten
Professor	306	282	92.2	476	460	96.2	497	478	96.2	513	501	97.7	518	504	97.3
Associate	358	232	64.8	370	319	86.2	368	314	85.3	351	301	85.8	339	296	87.3
Assistant	379	59	15.6	237	58	24.5	230	58	25.2	209	53	25.4	214	51	23.8
Instructor	139	15	10.8	47	3	6.4	46	3	6.5	35	2	5.7	26	2	7.7
4-Rank Total	1,182	588	49.7	1,132	840	74.2	1,141	853	74.8	1,108	857	77.3	1,097	853	77.8
Lecturer	20	---	---	42	1	2.4	30	1	3.3	33	1	3.0	36	---	---
5-Rank Total	1,202	588	48.9	1,174	841	71.6	1,171	854	72.9	1,141	858	75.2	1,133	853	75.3

OIR/PJR/eh
February, 1984

N = Total number
n ten = number tenured
% ten = percent tenured

The University of Connecticut
(Excluding Health Center)
Full-time Teaching Faculty by Rank and Sex, with Percentage Distribution among Ranks
1960-61 to 1983-84

	Professors ¹				Associate Professors				Assistant Professors				Instructors				Lecturers				Five Ranks Combined					
	M	F	Total	% in rank	M	F	Total	% in rank	M	F	Total	% in rank	M	F	Total	% in rank	M	F	Total	% in rank	M	F	Total	% in rank		
1960-61	---	---	99	17.5	---	---	131	23.5	---	---	174	30.7	---	---	162	28.6	---	---	---	---	---	---	566	100.0		
1961-62	---	---	109	20.9	---	---	127	24.3	---	---	161	30.8	---	---	125	24.0	---	---	---	---	---	---	522	100.0		
1962-63	---	---	123	18.7	---	---	147	22.3	---	---	214	32.5	---	---	175	26.5	---	---	---	---	---	---	659	100.0		
1963-64	---	---	142	20.2	---	---	154	21.9	---	---	246	35.1	---	---	160	22.8	---	---	---	---	---	---	702	100.0		
1964-65	---	---	154	19.8	---	---	177	22.8	---	---	270	34.8	---	---	175	22.6	---	---	---	---	---	---	776	100.0		
1965-66	156	6	162	19.7	181	20	201	24.5	264	44	308	37.6	107	42	149	18.2	---	---	---	---	---	---	708	112	820	100.0
1966-67	169	10	179	19.3	210	24	234	25.3	266	65	331	37.9	105	50	155	16.7	4	3	7	0.8	---	---	774	152	926	100.0
1967-68	200	13	213	21.1	238	30	268	26.5	306	64	370	36.6	91	55	146	14.5	8	5	13	1.3	---	---	843	167	1010	100.0
1968-69	227	13	240	22.3	270	36	306	28.4	297	66	363	33.7	104	54	158	14.7	6	5	11	1.0	---	---	904	174	1078	100.0
1969-70	257	15	272	23.8	290	39	329	28.8	300	72	372	32.5	94	56	150	13.1	14	6	20	1.8	---	---	955	188	1143	100.0
1970-71	287	19	306	25.4	318	40	358	29.8	299	80	379	31.5	84	55	139	11.6	16	4	20	1.7	---	---	1004	198	1202	100.0
1971-72	296	18	314	25.9	330	46	376	31.0	296	87	383	31.6	78	42	120	9.9	17	3	20	1.6	---	---	1017	196	1213	100.0
1972-73	311	14	325	27.5	329	53	382	32.3	267	81	348	29.4	69	41	110	9.3	15	3	18	1.5	---	---	991	192	1183	100.0
1973-74	329	21	350	30.3	330	57	387	33.5	235	78	313	27.1	47	40	87	7.5	13	6	19	1.6	---	---	954	202	1156	100.0
1974-75	341	26	367	31.8	308	51	359	31.1	228	86	314	27.2	38	35	73	6.3	26	16	42	3.6	---	---	941	214	1155	100.0
1975-76	376	25	401	35.4	290	53	343	30.3	228	77	305	26.9	24	32	56	4.9	16	12	28	2.5	---	---	934	199	1133	100.0
1976-77	389	29	418	36.6	282	56	336	29.6	220	84	304	26.7	19	28	47	4.1	16	10	26	2.0	---	---	926	215	1141	100.0
1977-78	413	33	446	38.9	293	52	345	30.1	194	90	284	24.8	17	25	42	3.7	14	15	29	2.5	---	---	931	215	1146	100.0
1978-79	421	29	450	39.0	295	55	350	30.3	190	90	280	24.3	18	23	41	3.5	18	15	33	2.9	---	---	942	212	1154	100.0
1979-80	432	32	464	40.4	296	59	355	30.9	171	84	255	22.2	18	26	44	3.8	17	14	31	2.7	---	---	934	215	1149	100.0
1980-81	443	35	478	40.7	306	64	370	31.5	155	82	237	20.2	22	25	47	4.0	23	19	42	3.6	---	---	949	225	1174	100.0
1981-82	459	38	497	42.4	297	71	368	31.4	141	89	230	19.6	26	20	46	3.9	15	15	30	2.6	---	---	938	233	1171	100.0
1982-83	471	42	513	45.0	280	71	351	30.8	141	68	209	18.3	20	15	35	3.1	16	17	33	2.9	---	---	928	213	1141	100.0
1983-84	470	48	518	45.7	269	70	339	29.9	143	71	214	18.9	14	12	26	2.3	17	15	36	3.2	---	---	913	220	1133	100.0

OIR/FJR/dlk
February, 1984

¹University Professors included.

The University of Connecticut
(excluding Health Center)
Mean Salaries as of November 1 for Five Ranks of the Full-time Teaching Faculty
1960-61 and 1963-64 to 1983-84
Longevity Included¹

Year	Professor	Associate Professor	Assistant Professor	Instructor	Lecturer
1960-61	\$10,102	\$ 8,423	\$ 6,831	\$ 5,477	\$ None
1963-64	13,024	10,304	8,035	6,685	None
1964-65	14,241	10,732	8,231	6,821	None
1965-66	15,571	11,504	8,879	7,524	None
1966-67	16,116	11,837	9,201	7,758	6,586
1967-68	19,921	14,318	11,088	8,876	10,835
1968-69	20,772	14,882	11,543	9,290	10,164
1969-70	22,118	15,606	12,155	10,044	11,193
1970-71	23,730	16,830	12,954	10,640	11,926
1971-72	24,402	17,085	13,178	10,706	11,396
1972-73	24,185	16,971	13,105	10,846	12,259
1973-74	24,522	17,337	13,385	11,165	12,281
1974-75	26,115	18,457	14,334	11,941	12,886
1975-76	26,479	18,845	14,639	12,136	13,538
1976-77 ²	26,237	18,490	14,492	12,307	13,542
1977-78	30,404	21,580	16,610	14,613	15,647
1978-79	32,159	22,783	17,956	15,325	16,236
1979-80	34,048	24,048	19,140	16,449	16,723
1980-81	36,076	25,611	20,383	17,450	17,982
1981-82	38,187	27,302	21,628	19,352	20,664
1982-83	41,279	29,764	24,398	22,231	22,012
1983-84	44,473	32,206	26,739	23,530	23,760

OIR/FJR/eh
February, 1984

¹Longevity - started Fall 1967.

²Salary increments, effective 12/31/76, raised these figures to 27,647; 19,533; 15,138; 12,634; and 13,933 respectively.

The University of Connecticut
(excluding Health Center)

Distribution of 1,133 Members of the 1983-84 Full-time Teaching Faculty by Sex, Age, and Years of Service

Years of Service - as of 9/83																				
	0 - 4		5 - 9		10 - 14		15 - 19		20 - 24		25 - 29		30 - 34		35 - 39		40 - 44		Total	
Sex	M	F	M	F	M	F	M	F	M	F	M	F	M	F	M	F	M	F	Male N %	Female N %
Age in 1983																				
20 - 24	1																		1 0.1	
25 - 29	13	9																	13 1.4	9 4.1
30 - 34	69	24	7	6															76 8.3	30 13.6
35 - 39	55	22	45	13	28	4	2												130 14.2	39 17.7
40 - 44	23	15	31	9	78	12	32	4											164 18.0	40 18.2
45 - 49	9	6	14	12	42	12	70	7	13	2									148 16.2	39 17.7
50 - 54	8	1	8	5	34	10	64	7	35	1	10	3		1					159 17.4	28 12.7
55 - 59	7	1	4	2	15	1	38	4	31	4	22		4		1				122 13.4	12 5.5
60 - 64	2	1	2	1	7	6	12	3	12	3	12		23	1	4				74 8.1	15 6.8
65 +				1	3	1	8	4	1	1	5	1	3		4		2		26 2.8	8 3.6
Total Male:																				
N	187		111		207		226		92		49		30		9		2		913	
%	20.5		12.1		22.7		24.7		10.1		5.4		3.3		1.0		0.2		100.0	
Total Female:																				
N	79		49		46		29		11		4		2		-		-		220	
%	35.9		22.3		20.9		13.2		5.0		1.8		0.9		-		-		100.0	

OIR/PJR/dlk
February, 1984

The University of Connecticut
(excluding Health Center)
Age of Retirement of the Tenured Faculty in All Functions
1974 to 1983

Age in Years	1974	1975	1976	1977	1978	1979	1980	1981	1982	1983	10 Year total	
71									1		1	19 = 10.2%
70	2		4	4	1	2	3	1		1	18	
69	1		1	2	1	2			1	1	9	59 = 31.7%
68		1		1	1	3	1	1		2	10	
67				1	2	1		1	1	3	9	
66	1		2	2		2	1		1	7	16	
65		2	1	3	2	1	2	1	2	1	15	
64	1		3	1	1		1	1	1	1	9	49 = 26.3%
63	2		2	1		2	1			1	9	
62	1	2	1	1			2			1	8	
61	1	1	2	1	1			1			7	
60	3	2	1	2	1	3	1		3		16	
59	1		1		1	2					5	36 = 19.4%
58	1		1	2	2	4		1	1	1	13	
57			1	1		1		2		1	6	
56	1			1		2	1	1			6	
55			1		1	1		2		1	6	
54		2	1		1			2			6	23 = 12.4%
53	1		3								4	
52				1		3					4	
51			1	1		1	2				5	
50			2			1	1				4	
Total	16	10	20	25	15	31	16	13	11	21	186	
Mean Age	62.1	61.1	60.8	63.3	62.7	60.7	62.1	59.8	64.1	64.9	62.1	
Median Age	61.5	61.5	61.5	65.0	64.0	60.0	63.5	57.0	65.0	66.0	63.0	

OIR/PJR/en
February, 1984

One dean who was also a tenured professor has been excluded.

Note: Table is based upon the calendar year. Year of retirement minus year of birth equals age at retirement. Actuarial accuracy (taking into account month and day of birth and of retirement date) was not attempted.

SPACE

The University of Connecticut
Storrs Campus
Space Distribution
By Type of Structure¹
Fall 1983

Type of Structure	Number of Usable Structures	Gross Sq. Ft.	Net Assignable Sq. Ft.
Academic ²	75	2,312,151	1,562,018
Academic Farm	37	148,152	133,515
Academic Houses	3	7,404	5,066
Library	1	414,486	294,540
Dormitories	55	2,086,690	1,349,651
Farm/Field Service	74	52,359	48,071
Garaques	7	7,575	7,053
General Use	22	276,328	165,647
General Use Houses	4	11,569	8,476
Commercial Rentals	3	35,409	30,605
Field Service/Farm Rentals	4	5,228	4,769
Rental Garaques	19	12,169	9,814
Rental Houses	43	91,251	81,066
Rental Apartrents	28	167,391	136,158
General Admin. Service	8	110,537	67,660
Support & Maintenance	14	151,010	138,673
Support & Maintenance Houses	4	11,576	8,177
Utility, Mechanical ³	29	36,480	2,625
Total	430	5,937,765	4,053,589

OIR/DNK/eh
December, 1983

¹ Includes only those structures considered fully usable. Does not include space not owned by the University (e.g., Faculty Alumni Center, Co-op Bookstore, churches, facilities owned by other agencies.)

² Jones Bldg. Annex, Nutritional Sciences, Agric. Fest. Fes. Bldgs. are all counted together as one building.

Physical Educ./Field House (pool, gym, Field House) are counted as one building.

³ Only 21 of the 29 structures have gross sq. footage figures available. Included in this category are such structures as watertowers, pump houses, and well structures.

Only one of these structures (the Sewage Plant Operation & Control Bldg.) has a net assignable square foot figure (2,625 sq. ft.)

The University of Connecticut
Storrs Campus
Space Distribution
By Functional Use
Fall 1983

Functional Use Categories	Net Assignable Sq. Ft.	% of Total
Unclassified Areas ¹	88,223	2.18
Classroom Facilities	172,209	4.25
Class Lab. Facilities	143,301	3.54
Office Facilities	513,804	12.68
Study Facilities ²	315,189	7.78
Special Use Facilities ³	534,209	13.18
General Use Facilities ⁴	503,798	12.43
Supporting Facilities ⁵	188,125	4.64
Medical Care Facilities	10,840	0.27
Residential Facilities	1,200,285	29.61
Class Lab. Facilities Service	40,328	0.99
Other Class Lab. Facilities	30,761	0.76
Non-Class Lab. Facilities	245,984	6.07
Non-Class Lab. Service Facilities	66,533	1.64
Total Assignable Square Feet	4,053,589	100.00

OIR/DNK/eh
December, 1983

- ¹ Includes inactive areas, alteration/conversion areas, unfinished areas.
- ² Includes study areas, stack areas, reading rooms, library processing and work areas.
- ³ Includes armory, athletic/P.E., Audio-Visual facilities, and non-medical clinic instruction areas such as used for Speech, Psychology, and Remedial Reading; Demonstration facilities (designed for practice in child care, home management, etc.); Farm Field buildings (barns or similar structures for animal shelter or the handling, storage, and/or protection of farm products, supplies and tools used for field experiments).
- ⁴ Includes areas open to the student body at large and/or the general public (e.g., assembly, exhibition areas, dining rooms, sales facilities, lounges, recreation - game facilities, non-class meeting rooms, general locker rooms, etc.).
- ⁵ Includes computer/data processing facilities, printing areas, central storage and vehicle storage areas.

The University of Connecticut
Space Distribution
By Functional Use
Fall 1983

UNIVERSITY OF CONNECTICUT at:

	Hartford		Avery Point		Stamford		Torrington		Waterbury	
Functional Use Categories	Net Assignable Square Feet	% of Total	Net Assignable Square Feet	% of Total	Net Assignable Square Feet	% of Total	Net Assignable Square Feet	% of Total	Net Assignable Square Feet	% of Total
Unclass. Areas	0	--	14,003	10.2	0	--	0	--	0	--
Classroom Facilities	12,762	31.0	15,821	11.5	10,455	18.7	2,550	10.1	12,181	25.1
Class Lab Facilities	6,464	15.7	4,755	3.5	5,955	10.6	5,066	20.0	4,762	9.8
Office Facilities	6,990	16.9	14,768	10.8	7,055	12.6	3,855	15.2	7,109	14.7
Study Facilities	5,273	12.8	10,335	7.5	18,843	33.7	2,360	9.3	10,286	21.2
Special Use Facilities	467	1.1	26,773	19.5	508	0.9	105	0.4	412	0.9
General Use Facilities	6,423	15.6	26,893	19.6	9,925	17.7	5,744	22.7	8,688	17.9
Supporting Facilities	0	--	10,745	7.8	1,452	2.6	1,398	5.5	762	1.6
Medical Care Facilities	176	0.4	0	--	0	--	0	--	0	--
Residential Facilities	0	--	4,270	3.1	0	--	2,288	9.0	0	--
Class Lab Facilities Serv.	2,290	5.5	4,794	3.5	1,812	3.2	1,319	5.2	2,043	4.2
Other Class Lab Facilities	180	0.4	2,490	1.8	0	--	669	2.6	2,233	4.6
Non-Class Lab Facilities	239	0.6	1,600	1.2	0	--	0	--	0	--
Non-Class Lab Facilities Serv.	0	--	0	--	0	--	0	--	0	--
Total	41,262	100.0	137,247	100.0	56,005	100.0	25,354	100.0	48,476	100.0

*Not included here are 71,723 additional square feet of areas rented or leased out, based on 1982 data.
Avery Point failed to respond to the 1983 Facilities inventory.

PROFESSIONAL SCHOOLS & INSTITUTES:

	Insurance & MBA - Hartford		School of Law		School of Social Work		Marine Sciences Avery Point		Marine Sciences Lab - Noank		Institute of Public Service Hartford	
Functional Use Categories	Net Assignable Square Feet	% of Total	Net Assignable Square Feet	% of Total	Net Assignable Square Feet	% of Total	Net Assignable Square Feet	% of Total	Net Assignable Square Feet	% of Total	Net Assignable Square Feet	% of Total
Unclass. Areas	0	--	0	--	0	--	0	--	0	--	0	--
Classroom Facilities	7,534	49.4	7,754	18.8	5,245	22.6	2,496	6.2	0	--	3,508	50.0
Class Lab Facilities	0	--	0	--	0	--	0	--	0	--	0	--
Office Facilities	3,972	26.0	11,665	28.4	8,666	37.4	11,047	27.2	1,078	12.9	2,905	41.4
Study Facilities	2,030	13.3	14,257	34.7	6,918	29.8	0	--	803	9.6	0	--
Special Use Facilities	0	--	0	--	700	3.0	0	--	0	--	0	--
General Use Facilities	1,120	7.4	7,475	18.1	1,304	5.6	209	0.5	0	--	603	8.6
Supporting Facilities	600	3.9	0	--	374	1.6	2,381	5.9	1,348	16.1	0	--
Medical Care Facilities	0	--	0	--	0	--	0	--	0	--	0	--
Residential Facilities	0	--	0	--	0	--	0	--	0	--	0	--
Class Lab Facilities Serv.	0	--	0	--	0	--	0	--	0	--	0	--
Other Class Lab Facilities	0	--	0	--	0	--	0	--	0	--	0	--
Non-Class Lab Facilities	0	--	0	--	0	--	11,171	27.5	2,798	33.5	0	--
Non-Class Lab Facilities Serv.	0	--	0	--	0	--	13,279	32.7	2,330	27.9	0	--
Total	15,256	100.0	41,151	100.0	23,207	100.0	40,583	100.0	8,357	100.0	7,016	100.0

OIN/DNK/en
December, 1983

The University of Connecticut
Storrs Campus
Assignable Square Feet
Fall 1983

College, School, Division		Assignable Sq. Ft.
Agriculture		349,216
Allied Health		13,411
Business		22,394
Education:		
E. O. Smith High School	98,227	
Sport & Leisure Studies	64,222	
All Other	29,282	
Total		191,731
Engineering		113,986
Family Studies		32,906
Fine Arts		88,400
Graduate Education & Research		18,891
Liberal Arts & Sciences:		
Dean's Office	5,352	
Anthropology	9,796	
Biobehavioral Sciences	32,251	
Biological Sciences	136,274	
Chemistry	61,045	
Communication Sciences	14,490	
Economics	7,719	
English	11,508	
Geography	3,431	
Geology and Geophysics	19,726	
History	8,451	
Journalism	1,876	
Linguistics	3,318	
Mathematics	10,430	
Modern & Classical Lang.	9,740	
Philosophy	4,153	
Physics	43,946	
Political Science	7,890	
Psychology	50,382	
Sociology	8,300	
Statistics	4,922	
Air ROTC	5,150	
Army ROTC Military Science	19,871	
Total		480,021
Nursing		10,967
Pharmacy		42,235
Department of Residential Life		1,244,970
All Other		1,444,461
Total Assignable Space		4,053,589

OIR/DNK/eh
December, 1983

The University of Connecticut
Health Center
Facilities Data
Fall 1983

I. Total Acreage		151.24 acres
<hr/>		
II. Number of Structures	Gross Sq. Ft.	Net Assignable Sq. Ft.
A. Main Complex	1,150,000	580,960
B. Out Buildings (17)	51,280	47,237
Total	<u>1,201,280</u>	<u>628,197</u>
<hr/>		
III. Room Use Categories		Net Assignable Sq. Ft.
A. Classroom Facilities		11,687
B. Class Laboratories		34,212
C. Special Class Laboratories		7,797
D. Non-Class Laboratories		106,027
E. Offices and Conference Rooms		127,256
F. Study Facilities		21,146
G. Audio-Visual Facilities		3,401
H. Animal Facilities		22,871
I. Assembly Facilities		4,735
J. Food Services Facilities		20,229
K. Lounges		1,936
L. Merchandising Facilities		2,547
M. Lockers		3,429
N. Data Processing Facilities		2,978
O. Trade Shops		13,534
P. Storage and Warehousing Facilities		24,375
Q. Vehicle Garages		5,276
R. Health Care Facilities		214,761
Total		<u>628,197</u>
<hr/>		
IV. Distribution by School, Program		Net Assignable Sq. Ft.
A. Medical School		193,745
B. Dental School		98,138
C. Hospital		214,761
D. Other: Library		26,838
Center for Laboratory Animal Care		22,737
Auditoria - Jointly Used		9,950
Finance, Physical Plant, Public Safety		42,499
All Other - Administrative and Support		19,529
Total		<u>628,197</u>

OIR/DLK/eh
December, 1983

Source: Health Center's Department of Facilities Planning and Analysis.

FINANCE

The 1981 Conn. Budget
(excluding Health Center)
Balance Sheet June 30, 1983

FUNDS								
	Current		Endowment and Similar Funds	Loan	Agency	Plant		
	Unrestricted	Restricted				Unexpended	Funds for Retirement of Indebtedness	Investment in Plant
ASSETS								
Cash held by State Treas.	\$15,769,921	\$1,569,763	\$ 4,677	\$	\$	\$ 538,354	\$2,133,351	\$
Cash in Local Banks	68,657	(66,220)	(15,456)	(8,876)	10,038			
Cash in Other Banks	102,766							
Continuing Appropriations	112,476							
Investments:								
State Treasurer	6,000,000	100,000	230,516				1,040,000	
Univ. Admin.	1,357,494	3,678,512	1,598,856	368,582	862,318			
Accounts Receivable (less reserve of \$83,388.11)	4,358,559	1,332,494	2,038		492			24,694
Loans Receivable				10,731,884				
Accrued Interest Receivable				1,031				
Advance to Univ. of Ct. Fnd.	110,632							
Advance to Bond Sinking Fund	3,173,351							
Due from Univ. of Conn. Health Center								70,635
Due from Other Funds	385,524	75,390				1,088,719		
Inventories	1,642,739							
Land								4,174,225
Non-Structural Improvements								16,736,220
Buildings								157,285,820
Equipment								86,602,854
Construction in Progress								3,615,245
Deferred Charges	10,349							
Unexpended Allotments						5,421,648		
Total Assets	\$33,092,468	\$6,669,939	\$1,820,629	\$11,092,621	\$872,848	\$7,048,721	\$3,173,351	\$268,509,733
LIABILITIES AND FUND BALANCES								
Liabilities:								
Accounts Payable	\$ 160,992	\$ 7,136	\$ 1,900	\$ 23	\$ 57,148	\$	\$	\$
Accrued Salaries	1,649,396	296,583						
Due to State of Conn.	711,592	48,946						968,190
Due to Other Funds	1,065,848	460,148	5,558	2,386	15,693			
Deposits Held in Custody for Others					800,007			
Bonds Payable								7,710,000
Deferred Income	3,050,710							
Advance from Auxiliary Services							3,173,351	
Total Liabilities	6,638,538	812,813	7,458	2,409	872,848		3,173,351	8,678,190
Fund Balances:								
Restricted:								
Federal Loan Funds				10,829,390				
Other Loan Funds				260,821				
Total Restricted		5,857,126	1,613,171	11,090,211		5,960,002		
Unrestricted	26,453,930					1,088,719		
Net Investment in Plant								259,831,543
Total Fund Balances	26,453,930	5,857,126	1,613,171	11,090,211		7,048,721		259,831,543
Total Liabilities & Fund Balances	\$33,092,468	\$6,669,939	\$1,820,629	\$11,092,620	\$872,848	\$7,048,721	\$3,173,351	\$268,509,733

OIR/eh
December, 1983

Source: Accounting Office

The University of Connecticut
(excluding Health Center)
Physical Facilities
By Location
Fall 1983

	Number of Usable Structures ¹	Gross Sq. Ft.	Net Assignable Sq. Ft.
Storrs	430	5,937,765	4,053,589
Avery Point and Noank			
University of Connecticut at Avery Point	30	289,598	137,247
Marine Sciences Institute	4	51,881	40,583
Noank Marine Research Laboratory	3	10,620	8,357
Branford House	1	18,900	11,340 ²
Hartford			
University of Connecticut at Hartford	1	67,376	41,262
Center for Insurance Education and Research and MBA	2	30,020	15,256
School of Law	1	67,751	41,151
Institute of Public Service	1	11,538	7,016
School of Social Work	1	39,096	23,207
Stamford			
University of Connecticut at Stamford	3	80,036	56,005
Torrington			
University of Connecticut at Torrington	3	40,513	25,354
Waterbury			
University of Connecticut at Waterbury	5	75,544	48,476
Total	485	6,720,638	4,508,843

OIR/DNK/eh
December, 1983

¹Unusable structures with no assignable space are omitted.

²Estimated.

The University of Connecticut
Health Center
Balance Sheet by Fund Group
June 30, 1983

	FUNDS							
	Current		Auxiliary Enterprises	Clinical Programs	Endowment and Similar Funds	Loan	Plant	
	Unrestricted	Restricted					Unexpended	Investment in Plant
ASSETS								
Cash	\$ 341,852	\$3,493,965	\$1,003,486	\$(3,435,012)	\$39,979	\$ 395,487	\$ 2,797,469	\$
Investments	460,000	4,000,000						
Receivables	14,733		4,296,868	12,758,422		1,792,224	394,110	
Due from Other Funds			429,563	282,084				
Inventories	880,895		150,770	651,120				
Prepaid Expenses				248,103				
Authorized Future Borrowing							734,400	
Unallotted Appropriations							6,608,328	
Lands								883,459
Buildings								97,986,637
Non-Structural Improvements								4,615,132
Construction in Progress								322,709
Equipment			350,727					39,139,497
Total Assets	\$1,697,480	\$7,493,965	\$6,231,414	\$10,504,737	\$39,979	\$2,187,711	\$10,534,307	\$142,947,434
LIABILITIES, RESERVES AND FUND BALANCES								
Deferred Income	\$ 60,425	\$	\$ 136,280	\$	\$	\$	\$	\$
Accounts Payable		69,866	2,553,380	7,622,537				
Due to Other Funds		163,359	68,396	347,320				
Due to Other Agencies		253,253					70,635	
Fund Balances:								
Reserved	1,158,712	6,944,478	742,267					
Unreserved	478,343	63,009	2,731,091	2,534,880	39,979	2,187,711	10,463,672	
New Investment in Plant								142,947,434
Total Liabilities and Fund Balances	\$1,697,480	\$7,493,965	\$6,231,414	\$10,504,737	\$39,979	\$2,187,711	\$10,534,307	\$142,947,434

OIR/eh
December, 1983

Source: The University of Connecticut Health Center

The University of Connecticut
(excluding Health Center)
Statement of Current Funds Revenues,
Expenditures and Other Changes

			Totals	
	Unrestricted	Restricted	For the Year Ended June 30, 1983	1982
REVENUES				
Fees and Tuition	\$ 30,275,977	\$ 57,435	\$ 30,333,412	\$ 23,839,627
Federal Appropriations	12,633	4,392,955	4,405,588	4,167,107
State Appropriations	79,787,891		79,787,891	74,662,269
Federal Grants and Contracts	557,731	16,285,812	16,843,543	15,956,978
State Grants and Contracts	748,201	900,484	1,648,685	666,708
Local Grants and Contracts		8,569	8,569	64,105
Private Gifts, Grants and Contracts	4,869,989	4,890,859	9,760,848	7,328,163
Endowment Income		383,621	383,621	422,228
Sales and Services of Educational Activities	4,165,415		4,165,415	3,986,140
Sales and Services of Auxiliary Services	25,051,983		25,051,983	24,400,015
Other Sources	2,387,811	338,878	2,726,689	3,160,851
Total Current Revenues	147,857,631	27,258,613	175,116,244	158,654,211
EXPENDITURES AND MANDATORY TRANSFERS				
Educational and General:				
Instruction	50,808,183	3,362,499	54,170,682	48,689,377
Research	9,258,992	12,917,583	22,176,575	18,939,091
Public Service	4,274,249	3,428,398	7,702,647	7,063,590
Academic Support	16,451,175	138,257	16,589,432	17,073,385
Student Services	8,168,766	1,701,560	9,870,326	7,730,773
Institutional Support	16,263,137	946,285	17,209,422	16,558,311
Operation and Maintenance of Plant	13,905,984	32,875	13,938,859	12,402,759
Independent Operations	571,767	1,664	573,431	488,457
Scholarships and Fellowships	3,292,658	4,743,124	8,035,782	7,013,547
Capital Outlay and Warehousing	(6,037)	370,261	364,224	267,766
Educational and General expenditures	124,988,874	27,642,506	152,631,380	136,227,056
Mandatory Transfers for:				
Loan Fund Matching Grant	30,000		30,000	27,938
Work Study Matching Grant	229,000		229,000	229,000
Total Educational and General	125,247,874	27,642,506	152,890,380	136,483,994
Auxiliary Services:				
Expenditures	18,237,972		18,237,972	17,536,497
Mandatory Transfers for Retirement of Indebtedness	1,436,609		1,436,609	1,331,506
Total Expenditures and Mandatory Transfers	144,922,455	27,642,506	172,564,961	155,351,997
OTHER TRANSFERS AND ADDITIONS/(DEDUCTIONS)				
Transfers from:				
Unrestricted Funds		229,000	229,000	229,000
Plant Funds		140,014	140,014	(218,993)
Deferred Charges				(2,387)
Endowment Principal		3,514	3,514	
Transfers to:				
Loan Funds		(121)	(121)	(141)
Endowment Principal				(13,718)
Restricted Funds	(665,441)	665,441		
Plant Funds	(246,617)		(246,617)	
Inventory Increase/(Decrease)	(11,915)		(11,915)	7,234
Net Increase in Fund Balances	\$ 2,011,203	\$ 653,955	\$ 2,665,158	\$ 3,303,209

OIR/en
December, 1983

Source: Accounting Office

The University of Connecticut
Health Center
Statement of Current Funds Revenues,
Expenditures and Transfers

	Totals					
	Unrestricted	Restricted	Auxiliary Enterprises	Clinical Programs	For the Year Ended June 30, 1983	1982
REVENUES						
Student Fees and Tuition	\$ 580,962	\$	\$ 1,274,406	\$	\$ 1,855,368	\$ 1,310,470
Governmental Appropriations	30,568,820				30,568,820	28,306,093
Endowment Income		5,221			5,221	4,878
Sponsored Research						
Governmental		16,076,445			16,076,445	13,992,259
Non-Governmental		2,271,074			2,271,074	2,369,670
Other Sponsored Programs						
Governmental		1,865,198			1,865,198	3,627,793
Non-Governmental		1,541,577			1,541,577	777,361
Student Aid		1,380,449			1,380,449	967,780
Clinical Programs				44,644,580	44,644,580	38,893,784
Auxiliary Services			7,121,964		7,121,964	6,380,656
Medical Group Services			11,909,985		11,909,985	9,848,684
Other Sources	44,828				44,828	15,782
Total Revenues	31,194,610	23,139,964	20,306,355	44,644,580	119,285,509	106,495,210
EXPENDITURES						
Non-Functional	32,875		17,417		50,292	53,577
Instruction	13,378,382	3,063,526	4,363,592		20,805,500	20,855,715
Organized Research		13,193,176			13,193,176	13,943,758
Public Service	1,324,509	152,679	12,711,482	46,687,316	60,875,986	53,328,033
Academic Support	2,317,038	277,827	1,093,830		3,688,695	3,178,016
Student Service			387,856		387,856	337,541
Institutional Support	10,612,865	1,326,501	1,219,557		13,158,923	12,223,882
Independent Operations			141,280		141,280	76,422
Scholarships and Fellowships	62,372	1,394,143			1,456,515	1,088,293
Total Expenditures	27,728,041	19,407,652	19,935,014	46,687,316	113,758,223	105,085,237
TRANSFERS						
To:						
Loan Funds	2,647		134,090		136,737	165,468
Clinical Programs Fund	2,177,636				2,177,636	3,677,636
Student Aid			68,771		68,771	78,692
Auxiliary Services Fund	902,500				902,500	902,500
Dean's Discretionary Fund		344			344	676
Plant Funds				(830,257)	(830,257)	295,594
Petty Cash Fund		11,500			11,500	
Unrestricted Fund Reserve	72,333				72,333	-0-
Auxiliary Services Fund Reserve			742,267		742,267	-0-
From:						
Plant Funds						1,474
Unrestricted Funds			902,500	2,177,636	3,080,136	4,580,459
Restricted Fund Reserve		(3,781,648)			(3,781,648)	(802,387)
Auxiliary Services Fund		68,771			68,771	78,692
Clinical Program Reserve						786,916
Loan Funds		500			500	-0-
Net Transfers	(3,155,116)	(3,724,221)	(42,628)	3,007,893	(3,914,072)	(475,412)
Excess of Current Revenues Over Expenditures and Transfers	\$ 311,453	\$ 7,891	\$ 328,713	\$ 965,157	\$ 1,613,214	\$ 934,561

OIR/eh
December, 1983

Source: The University of Connecticut Health Center

The University of Connecticut
(excluding Health Center)
Summary of Changes in Investment in Plant
For the Year Ended June 30, 1983

	Acres	Value July 1, 1982	Additions	Deductions	Value June 30, 1983
Land	3,967	\$ 4,174,225	\$	\$	\$ 4,174,225
Buildings		156,611,528	689,563	15,271	157,285,820
Non-Structural Improvements		16,228,693	507,527		16,736,220
Equipment		79,857,964	6,744,930		86,602,894
Construction in Progress:					
Buildings		1,105,428	2,135,298	409,857	2,830,869
Non-Structural Improvements		106,759	730,908	53,291	784,376
Investment in Plant, July 1982		\$258,084,597			
Additions			\$10,808,226		
Deductions				\$478,419	
Investment in Plant, June 30, 1983					\$268,414,404

LAND DISTRIBUTION - JUNE 30, 1983

Location	Acres	Book Value
Center for Insurance Education & Research and MEA - Hartford	3	\$ 18,762
Cooperative Extension Service:		
Former Hartford County Extension - Hartford	-	1,468
Middlesex County Extension - Haddam	6	16,955
Windham County Extension - Brooklyn	6	2,995
Greater Hartford Campus	58	572,492
University of Connecticut at Hartford		
School of Law		
School of Social Work		
Holcomb Property - Granby	332	332,430
Bowen-Richardson Property - Woodstock	120	107,143
Lee Farm - Coventry	91	14,966
Whitacre Property - Madison	5	4,000
University of Connecticut at Storrs	3,003	1,874,169
University of Connecticut at Avery Point and Institute of Marine Sciences		
Avery Point	73	283,000
Noank	1	8,440
University of Connecticut at Stamford	34	102,770
University of Connecticut at Torrington	191	64,000
University of Connecticut at Waterbury	6	53,885
Other		
Former Hartford Campus - Hartford	17	90,345
Hartford Seminary Foundation Property - Hartford	20	617,369
Former School of Social Work - Hartford	1	9,036
Total	3,967	\$4,174,225

OIR/eh
December, 1983

Source: Accounting Office

The University of Connecticut
(excluding Health Center)
1984-85 Capital Budget Recommendations

Project	Campus	Unit Request	BOG Recommendation	OPH Recommendation
ENERGY CONSERVATION/ HANDICAPPED ACCESS				
Solid Waste Disposal/ Heat Recovery Facility ¹	Storrs	\$ 2,018,000	\$ 2,018,000	\$ -0-
Energy Conservation Projects ¹	Various	1,867,000	1,867,000	950,000
Conversion from Oil to Oil/ Gas Fired Burners ¹	Storrs	959,000	-0-	-0-
Removal of Architectural Barriers ¹	Various	218,800	218,800	218,800
RENOVATIONS				
Campus Master Plan ¹	Storrs	200,000	-0- ²	-0-
Dormitory Renovations Phase II ¹	Storrs	2,770,999 ³	2,770,000 ³	2,750,000 ³
Renovate Hall Building	Storrs	672,000	672,000	-0-
Improve Campus Security ¹	Storrs	220,000	220,000	220,000
Air Condition Jordensen Auditorium ¹	Storrs	540,000 ³	540,000 ³	540,000 ³
Academic Laboratory Renovations	Storrs	1,172,000 ⁴	702,180 ⁴	702,200
Computer Wiring - Buildings ¹	Storrs	500,000	500,000	150,000
Renovate and Expand Utilities ¹	Various	1,076,000	1,076,000	-0-
Improvements and Renovations ¹	Various	1,076,000	1,076,000	858,830
Facilities Restoration ¹	Various	2,128,000	2,600,000 ⁵	⁶
Hartford Campus Renovations	West Hartford	773,000	-0-	-0-
Waste Water Collection & Treatment System	Storrs	840,000	-0-	-0-
Drama/Music Renovations	Storrs	74,000	-0-	-0-
NEW FACILITIES				
Addition to Biobehavioral Building ¹	Storrs	232,200	232,200	-0-
George White Building Addition - Agriculture	Storrs	144,000	-0-	-0-
Addition to Benton Museum	Storrs	58,000	-0-	-0-
Fine Arts - Music Library Addition	Storrs	126,000	-0-	-0-
MISCELLANEOUS (BUREAU OF PUBLIC WORKS FEES)⁷				
General Obligation Bonds	---	927,394	928,000	927,470
Self-liquidating Bonds	---	---	---	---

OIR/DLK/dlk
January, 1984

¹Included in Board of Higher Education Five-Year Facilities Plan FY 83-88.

²Funds are available for this project from an existing bond authorization for alterations, renovations and improvements to various buildings at The University of Connecticut.

³Self-liquidating bonds.

⁴Upon review of the list of proposed renovations with the University staff, it was determined that funds requested for renovations to laboratories in the Pharmacy building (\$149,000) and \$200,000 which has been included in the operating budget for laboratory renovations could be culled from the FY 84-85 Capital Budget Request. The \$702,180 recommendation reflects the revised list of renovations for which funds are needed from the FY 84-85 Capital Budget.

⁵It is recommended that funds requested by the University in the FY 84-85 Operating Budget for facilities restoration projects be included as part of the FY 84-85 Capital Budget Request. The Board's recommendation reflects the funds requested by the University for FY 84-85 in both the operating and capital budgets.

⁶The Office of Policy and Management recommended the authorization of funds to the Department of Higher Education in the amount of \$1,500,000 for deferred maintenance projects for all constituent units of Higher Education.

⁷Additional funds are requested to supplement existing bond authorizations wherein funds have been allocated or are earmarked to finance Bureau of Public Works fees charged against various projects.

Source: Office of Facilities

The University of Connecticut
Health Center
1984-85 Capital Budget Recommendations

Project	Unit Request	BCG Recommendation
<u>Energy Conservation/Handicapped Access</u>		
<u>Renovations</u>		
Sprinklers	\$ 500,000	\$ 500,000
<u>New Facilities</u>		
Parking	2,363,600	2,363,600
Nuclear Magnetic Resonance Facility	40,000	40,000
New Inpatient Hospital Tower	250,000	-0-
Sub-total	2,653,000	2,403,600
Total	\$3,153,600	\$2,903,600

OIR/DLK/eh
December, 1983

Included in Board of Higher Education Five-Year Facilities Plan FY 82-87

Source: The University of Connecticut Health Center.

The University of Connecticut
Awards and Donations
July 1, 1982 to June 30, 1983

	Accumulations		
	<u>Storrs</u>	<u>Health Center</u>	<u>Total University</u>
	<u>1982/83</u>	<u>1982/83</u>	<u>1982/83</u>
As of June 30	\$18,551,931	\$21,025,104	\$39,577,035
I. Research Projects	11,383,796	18,178,732	29,562,528
II. Scholarships & Fellowships	3,420,497	294,873	3,715,370
III. Traineeships	1,114,000	1,439,034	2,553,034
IV. Educational Related Programs	2,208,026	1,000,342	3,208,368
V. Gifts and Donations - Unrestricted	425,612	112,123	537,735
Total	\$18,551,931	\$21,025,104	\$39,577,035

OIR/eh
December, 1983

Source: The Office of Grants and Contracts Administration.

The University of Connecticut
(excluding Health Center)
Budget Summary - All Funds

Programs	1981/82 Actual	1982/83 Estimated	1983-84 Estimated	1984/85 Recommended
Academic Affairs				
College of Agriculture and Natural Resources	\$ 12,673,000	\$ 13,890,000	\$ 14,909,000	\$ 15,480,000
School of Business	4,472,000	5,405,000	5,867,000	6,205,000
School of Education	5,647,000	6,016,000	6,473,000	6,680,000
School of Engineering	5,727,000	5,844,000	6,444,000	6,785,000
School of Family Studies	1,176,000	1,201,000	1,313,000	1,335,000
School of Fine Arts	2,970,000	3,152,000	3,372,000	3,435,000
College of Liberal Arts and Sciences	26,729,000	27,202,000	29,475,000	30,137,000
Avery Point Regional Campus	1,483,000	1,581,000	1,723,000	1,763,000
Hartford Regional Campus	1,182,200	1,306,000	1,394,000	1,414,000
Stanford Regional Campus	1,222,000	1,344,000	1,442,000	1,494,000
Torrington Regional Campus	445,000	463,000	506,000	515,000
Waterbury Regional Campus	1,030,000	1,117,000	1,206,000	1,221,000
School of Law	2,660,000	3,056,000	3,265,000	3,390,000
School of Social Work	3,837,000	3,786,000	3,998,000	4,155,000
Division of Continuing Education	5,895,000	5,823,000	6,291,000	6,634,000
University Library - Storrs	3,023,000	3,433,000	3,928,000	4,329,000
Educational Centers	5,130,000	6,026,000	6,387,000	6,676,000
Academic Administration	1,369,000	1,531,000	1,717,000	2,138,000
Total Academic Affairs	86,674,000	92,176,000	99,710,000	103,786,000
Executive Administration				
Division of Athletics	2,690,000	3,295,000	3,493,000	3,702,000
Executive Administration	1,804,000	1,824,000	1,886,000	1,818,000
Total Executive Administration	4,494,000	5,119,000	5,179,000	5,520,000
Finance and Administration				
Office of Facilities	6,317,000	7,124,000	7,935,000	8,190,000
Facilities Restoration Program	180,000	633,000	470,000	1,000,000
Division of Public Safety	2,585,000	2,823,000	3,066,000	3,368,000
Department of University Computer Systems	4,179,000	4,360,000	4,952,000	5,937,000
Energy	10,395,000	9,983,000	10,692,000	11,910,000
General Finance and Administration	6,352,000	8,544,000	9,206,000	9,557,000
Total Finance and Administration	30,008,000	33,467,000	36,321,000	39,962,000
Graduate Education				
Graduate Education	3,541,000	4,763,000	5,057,000	5,223,000
Total Graduate Education	3,541,000	4,763,000	5,057,000	5,223,000
Health Affairs				
School of Allied Health	791,000	867,000	901,000	938,000
School of Nursing	1,642,000	1,535,000	1,658,000	1,719,000
School of Pharmacy	2,564,000	2,748,000	2,932,000	3,079,000
Division of Health Services	2,039,000	2,075,000	2,200,000	2,332,000
Total Health Affairs	7,036,000	7,225,000	7,691,000	8,068,000
New Facilities				
New Facilities	0	0	0	352,000
Total New Facilities	0	0	0	352,000
Student Affairs				
Residential Life	11,947,000	13,351,000	14,152,000	15,002,000
Student Affairs Administration	3,122,000	3,437,000	3,687,000	3,901,000
Total Student Affairs	15,069,000	16,788,000	17,839,000	18,903,000
Student Financial Aid				
Financial Aid	8,493,000	8,493,000	9,807,000	10,734,000
Total Student Financial Aid	8,493,000	8,493,000	9,807,000	10,734,000
Undistributed Charges				
Undistributed Charges	2,444,000	3,664,000	6,006,000	8,172,000
Collective Bargaining	175,000	172,000	176,000	4,705,000
Total Undistributed Charges	2,619,000	3,836,000	6,182,000	12,877,000
Total	\$157,934,000	\$171,867,000	\$187,786,000	\$205,425,000

OIR/eh
October 1983

Source: The University of Connecticut Program Budget, 1984-85.

The University of Connecticut
(excluding Health Center)
Budget Summary - General and Tuition Funds

Program	1981/82 Actual	1982/83 Estimated	1983/84 Estimated	1984/85 Recommended
Academic Affairs				
College of Agriculture and Natural Resources	\$ 5,600,000	\$ 6,402,000	\$ 6,971,000	\$ 7,068,000
School of Business	2,472,000	2,696,000	2,997,000	3,163,000
School of Education	3,109,000	3,318,000	3,614,000	3,649,000
School of Engineering	4,177,000	4,529,000	5,052,000	5,308,000
School of Family Studies	987,000	1,024,000	1,124,000	1,136,000
School of Fine Arts	2,607,000	2,834,000	3,035,000	3,078,000
College of Liberal Arts and Sciences	19,503,000	21,037,000	22,941,000	23,211,000
Avery Point Regional Campus	1,078,000	1,175,000	1,293,000	1,307,000
Hartford Regional Campus	1,149,000	1,273,000	1,360,000	1,377,000
Storford Regional Campus	1,178,000	1,288,000	1,384,000	1,432,000
Torrington Regional Campus	443,000	456,000	499,000	507,000
Waterbury Regional Campus	1,007,000	1,096,000	1,184,000	1,198,000
School of Law	2,033,000	2,304,000	2,999,000	3,076,000
School of Social Work	1,469,000	1,576,000	1,655,000	1,672,000
Division of Continuing Education	527,000	520,000	669,000	674,000
University Library - Storrs	2,799,000	3,201,000	3,683,000	4,069,000
Educational Centers	1,738,000	1,891,000	2,057,000	2,084,000
Academic Administration	1,174,000	1,441,000	1,622,000	2,037,000
Total Academic Affairs	53,050,000	58,061,000	64,139,000	66,046,000
Executive Administration				
Executive Administration	1,168,000	988,000	1,071,000	1,150,000
Total Executive Administration	1,168,000	988,000	1,071,000	1,150,000
Finance and Administration				
Office of Facilities	5,951,000	6,402,000	7,169,000	7,378,000
Facilities Restoration Program	180,000	633,000	470,000	1,000,000
Division of Public Safety	1,617,000	1,762,000	1,942,000	2,177,000
Department of University Computer Systems	3,730,000	3,962,000	4,530,000	5,489,000
Energy	5,822,000	5,525,000	5,966,000	6,900,000
General Finance and Administration	3,569,000	3,932,000	4,789,000	4,848,000
Total Finance and Administration	20,869,000	22,216,000	24,866,000	27,792,000
Graduate Education				
Graduate Education	2,226,000	2,357,000	2,569,000	2,586,000
Total Graduate Education	2,226,000	2,357,000	2,569,000	2,586,000
Health Affairs				
School of Allied Health	633,000	731,000	757,000	785,000
School of Nursing	1,073,000	1,132,000	1,230,000	1,267,000
School of Pharmacy	1,291,000	1,362,000	1,463,000	1,522,000
Total Health Affairs	2,997,000	3,225,000	3,450,000	3,574,000
New Facilities				
New Facilities	0	0	0	352,000
Total New Facilities	0	0	0	352,000
Student Affairs				
Student Affairs Administration	765,000	737,000	825,000	867,000
Total Student Affairs	765,000	737,000	825,000	867,000
Student Financial Aid				
Financial Aid	1,613,000	1,788,000	2,700,000	4,321,000
Total Student Financial Aid	1,613,000	1,788,000	2,700,000	4,321,000
Undistributed Charges				
Undistributed Charges	195,000	1,571,000	3,787,000	5,819,000
Collective Bargaining	175,000	172,000	176,000	4,705,000
Total Undistributed Charges	370,000	1,743,000	3,963,000	10,524,000
Total	\$83,058,000	\$91,115,000	\$103,583,000	\$117,212,000

OIR/eh
October 1983

Source: The University of Connecticut Program Budget, 1984-85.

The University of Connecticut
Health Center
Program Budget Summary - All Funds

	Actual 1980-81	Actual 1981-82	Estimated 1982-83	Estimated 1983-84	Requested 1984-85
School of Medicine	\$14,000,788	\$ 15,324,037	\$ 15,484,306	\$ 18,081,048	\$ 18,962,378
School of Dental Medicine	7,341,309	8,754,142	9,624,783	10,469,270	\$11,459,311
Basic Science Departments	8,883,250	9,365,108	9,321,941	10,105,185	10,632,848
Library	931,271	966,427	1,142,319	1,239,899	1,339,167
Physical Plant	6,024,423	6,780,433	7,620,634	7,914,403	8,243,154
Center Administrative Services	3,497,836	3,882,838	4,101,449	5,329,636	6,030,127
Center Educational Support Services	2,637,865	2,620,062	3,214,777	3,883,390	4,052,770
Clinical Programs	53,141,004	60,833,940	71,563,922	73,164,742	81,746,171
Total Expenditures	\$96,457,746	\$108,526,987	\$122,074,131	\$130,187,573	\$142,465,926

OIR/DLK/eh
December, 1983

Source: The University of Connecticut Health Center Program Budget, 1984-85.

The University of Connecticut
Health Center
Program Budget Summary - General Fund & Tuition Fund

	Actual 1980-81	Actual 1981-82	Estimated 1982-83	Estimated 1983-84	Requested 1984-85
School of Medicine	\$ 6,304,708	\$ 6,679,843	\$ 7,248,080	\$ 9,055,308	\$ 9,629,128
School of Dental Medicine	3,338,207	3,624,787	5,174,815	5,717,170	6,346,211
Basic Science Departments	2,969,705	3,075,197	3,305,027	3,773,685	4,042,748
Library	782,748	865,690	1,008,344	1,099,599	1,185,867
Physical Plant	5,859,735	6,329,542	7,193,576	7,552,803	7,891,654
Center Administrative Services	2,099,424	2,450,156	2,753,487	3,110,036	3,564,927
Center Educational Support Services	1,138,231	1,188,123	1,311,220	1,730,434	1,764,670
Clinical Programs Subsidy	4,897,565	4,580,136	3,080,136	2,428,784	3,575,000
Poison Information Center	67,786	66,683	126,653	135,929	164,071
	-----	-----	-----	-----	-----
Total Expenditures	\$27,458,109	\$28,860,157	\$31,201,338	\$34,603,748	\$38,164,276

OIR/DLK/eh
December, 1983

Source: The University of Connecticut Health Center Program Budget, 1984-85.

The University of Connecticut
Total University
Student Financial Aid
1980 - 1983

Type of Aid	1980-81		1981-82		1982-83	
	Dollars	# Students	Dollars	# Students	Dollars	# Students
Loan						
GSL (F)	\$28,380,000	9,650	\$23,714,419	11,047	\$16,715,738	6,794
NDSL (F)	1,331,800	2,496	915,216	1,786	1,409,197	2,275
	<u>29,711,800</u>	<u>12,146</u>	<u>24,629,635</u>	<u>12,833</u>	<u>18,124,935</u>	<u>9,069</u>
Employment						
Student Labor (S)	1,970,387	3,500	2,034,882	3,500	1,807,547	3,653
CWS (F)	1,370,000	2,165	1,008,056	1,663	\$1,040,293	1,619
	<u>3,340,387</u>	<u>5,665</u>	<u>3,042,938</u>	<u>5,163</u>	<u>2,847,840</u>	<u>5,272</u>
Grant						
Auxil. Fund (S)	1,032,315	1,326	1,265,878	1,665	1,233,756	962
Pell (F)	2,825,750	3,052	2,325,855	2,725	2,077,794	2,107
Grad. Aid ¹ (S)	1,285,472	1,443	1,247,896	1,407	1,695,728	1,294
Tuit. Remiss. (S)	737,750	2,250	926,600	1,915	977,430	1,929
Outside Schol. (O)	667,000	1,000	810,289	1,118	910,472	1,124
State Schol. (S, O)	438,700	883	460,004	998	523,900	1,069
SEOG (F)	546,300	1,170	456,668	788	546,015	795
Inside Schol. (I)	105,900	252	100,951	233	138,566	288
Nursing Grant (F)	-0-	-0-	17,875	57	-0-	-0-
	<u>7,639,187</u>	<u>11,376</u>	<u>7,612,016</u>	<u>10,896</u>	<u>8,103,661</u>	<u>9,568</u>
Total	\$40,691,374	29,187²	\$35,284,589	28,892²	\$29,076,436	23,909²
F = Federal S = State I = Institutional O = Other						

OIR/DLK/eh
December, 1983

Source: Student Financial Aid Office.

¹Does not include Graduate/Research Assistantship Stipends.

²Represents duplicated number of students, since some students receive a combination of awards.

The University of Connecticut
(excluding Health Center)
Fees - Fall Semester 1983

	Storrs		Regional	Social Work		Bachelor of General Credit	MBA	Summer Session		Law	
	Grad	Undergrad	Campuses	Day	Credit Ext.	Studies Ext.	Off Campus	Grad	Undergrad	Day	Evening
Application Fee	\$ 25	\$ 20	\$ 20	\$ 20	\$	\$20	\$ 20	\$	\$	\$ 30	\$ 30
Acceptance Deposit		60	60	60						100	100
General University Fee	195	195	1	160	65/cr.	2	2	140/cr.	75/cr.	60/cr.	235
Health Service Fee	83	83	3	8						83	75/cr.
Tuition In-State	465	438	438	465						810	
Tuition Out-of-State	1,670	1,640	1,640	1,670						1,960	
Tuition Regional											
Program	580	550	550	580						1,015	
Nonresident Fee		325	325								
Student Activity Fee	10			5				7	7	15	
Student Government Fee		10	4								
Student Union Fee		6.50									
Connecticut Daily Campus Fee		1									
Deposit Account	50	50	50	50		50	50			50	
Coop. Bookstore Account	25	25	25	25		25	25				
Residence Hall Fee	707	592/632									
University Meals	573	573									
Student Operated Meals	V a r i e s										
Reinstatement Fee	50										
Late Fee	3/day	25	25								
Continuous Regis- tration Fee For:											
Masters Students -											
Plan A Thesis	45							45			
Masters Students -											
Plan B Non-Thesis	20							20			
Jr. Yr. Abroad		45									
Law School Abroad										70	
Doctoral Students	70							70			
Bachelor of General Studies						45					
Cooperative Education		45									
Senior Citizen Adm. Fee						15					

OIR/DLY/eh
October 1983

Source: Bursar's Office

- ¹General University Fee at Stamford \$136.00, all other Regional Campuses \$115.00.
- ²Flexible University Extension Fees equal to the prevailing prorated resident tuition and General University Fees during the academic year as follows:
- for undergraduate courses (except at the Regional Campuses) and for all BGS students, the prevailing undergraduate schedule at Storrs;
 - for undergraduate courses at the Regional Campuses, the prevailing undergraduate schedule at the Regional Campuses;
 - for graduate courses and for mixed registration of a graduate and an undergraduate course, the prevailing graduate schedule.
- ³\$8.00 Health Services Fee at the Greater Hartford Campus, at Storrs mandatory for students required to pay the General University Fee. Other on a voluntary basis. Law School Health Services Fee is optional.
- ⁴Green \$15.00, Hartford \$10.00, Stamford \$10.00, Torrington \$10.00, Waterbury \$10.00.
- ⁵A deposit of \$50.00 must be maintained by all students.
- ⁶A one-time refundable cooperative Bookstore payment of \$25.00 is required of all graduate and undergraduate students with the exception of: Health Center students in Farmington; students engaged in non-credit extension work; students registered solely for the summer sessions; non-degree students and students enrolled in the School of Law; MEA students in Hartford and Danbury.

The University of Connecticut
Health Center
Annual Fees, 1983-84

	Resident	Non-Resident
Medical School		
Fees	\$2,200.00	\$2,200.00
Tuition	1,950.00	3,750.00
	-----	-----
Total Medical School	\$4,150.00	\$5,950.00
Dental School		
Fees	\$3,200.00	\$3,200.00
Tuition	1,950.00	3,750.00
	-----	-----
Total Dental School	\$5,150.00	\$6,950.00

OIR/DLK/eh
October 1983

Source: The University of Connecticut Health Center.