

1-1-2005

2005

Kathe Gable

University of Connecticut School of Nursing, kathe.gable@uconn.edu

Follow this and additional works at: https://opencommons.uconn.edu/son_unison

 Part of the [Nursing Commons](#)

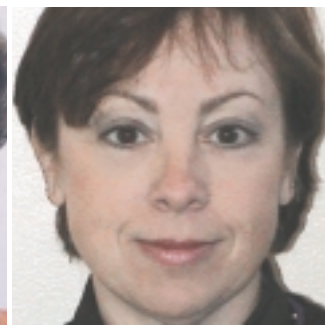
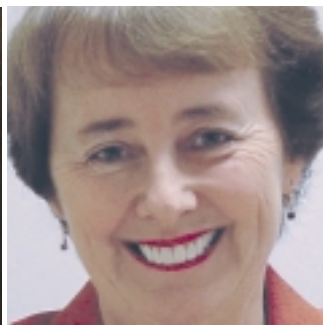
Recommended Citation

Gable, Kathe, "2005" (2005). *UNISON*. 2.
https://opencommons.uconn.edu/son_unison/2

School
of Nursing

Unison

Spring 2005 • Volume 8



*New Faces, New Initiatives,
and New Perspectives*



University of
Connecticut

Contents

Dean's Message	1
UConn School of Nursing News	2
Faculty Highlights	4
UConnect to Nursing	8
Honor Roll of Donors	9
Alumni News	14
Student/Alumni News	19
In Memoriam	20
Dynamic Faculty Defining Nursing	21
Faculty and Staff	24
Scholarship Support	25



In Honor of;

Josephine A. Dolan, MS, RN, PdD, DNSc
Professor Emerita (1913-2004)

UNISON is published each year for the alumni, faculty, staff, and friends of the School of Nursing at the University of Connecticut. Its purpose is to inform alumni, friends, prospective faculty and students of the School's programs, activities and accomplishments. If you have any questions about this publication, or the School of Nursing, you can contact us by phone at (860) 486-3716 or by fax at (860) 486-0001. You can also find additional information on our website at: www.nursing.uconn.edu.

Advisory Board

Elizabeth Beaudin '74, '80 MS, RN, CNAA, Chair
Director, Nursing & Workforce Initiatives
Connecticut Hospital Association

Patricia Bouffard '79 MS, RN, DNSc
Dean of Learning and Student Development
Naugatuck Valley Community College

Nancy Buckman, MSN, RN
Health Care Consultant

Mary Ann Camilleri '78 BS, JD, RN
Senior VP Hospital for Special Care

Bertie Chuong '92 MS, RN
Co-Director of Emergency Services Yale-New
Haven Hospital

Laura Dzurec '74, PhD, RN, CS
Dean and Professor, School of Nursing, UConn

Gayle Gabrielli '69 RN, MS
Clinical Consultant on Special Projects
Connecticut VNA by Masonicare

Evelyn Gonzalez-Morlote '94, '98 MS, RN
Nurse Recruiter, Mercy Hospital, Miami, FL

Mary Ellen Hobson '77, '86 MS, RN
President, Advocare Consulting & Clinical
Faculty Member, School of Nursing, UConn

George Kyriacou, MPH
Vice President, Network Development
Hartford Health Care Network

Matthew LaPorta '05 BS
Undergraduate Student Representative

Ellen Leone, RN, MS
Associate Vice President of Operations;
Director, Nursing UCHC/John Dempsey
Hospital

Carole Neag, RN

Scott O'Carroll
President/General Manager PROCARE USA

Margaret Patricelli, MS
Healthcare & Communications Consulting

Joan Quinn '59, '74 MS, RN, FAAN, GSA
Executive Director, Evercare

Mary Ann Ramano, APRN
Director of Human Resources and Quality
Natchaug Hospital

Donald St. Onge '84 MS, RN Practice Manager
Orthopedic Associates of Windham, CT

Teddi Therkildsen, MBA, RN
Director of Quality Management of the
Northeast Aetna

Janice Thibodeau '66, EdD, RN, FAAN
Professor Emerita, School of Nursing, UConn

Kelly Ulm '00, '05 MS, RN
Graduate Student Representative, UConn
Hartford Hospital-Per Diem

Nancy Valentine, PhD, MPH, RN, FAAN
Nurse Consultant/Educator Valentine Group
Health & Fairfield University

Eric Widmer, PhD
Headmaster, Deerfield Academy, Deerfield, MA

Dean's Message



Laura Cox Dzurec '74, PhD, RN, CS
Dean and Professor

“Preparing professional nurses to provide leadership at the state, national and international levels for over half a century”

The School's contributions to the profession of nursing are strengthened through the University's commitment to improve health for citizens of Connecticut, the nation, and the world, especially in this time of nursing faculty and nursing practice shortage. Our School's programs are dynamic and respond to changing health care needs. “We believe that nursing is a caring and healing art and science concerned with therapeutic action (praxis) and understanding people and health as experienced by individuals, families, and communities” (www.nursing.uconn.edu/Mission.html).

Supporting our Mission and Philosophy are the School's foci on human services, undergraduate enrichment, and innovations in science and technology. The School offers responsive curricula that contribute to the goals of nursing's social policy with programs of interdisciplinary health care and research. Faculty are advancing the discipline of nursing through high impact research that directly benefits the public and puts evidence into practice across clinical areas. The School's undergraduate enrichment plan incorporates application of nursing research curricula, a community-based curriculum, and a focus on students' quality of life. Active practice-based research and projects include interdisciplinary initiatives in aging, public health, and psychiatry. A team of visual communication designers, computer scientists, pharmacists, advanced nurse practitioners, and physicians is developing an online system for collecting and reporting patient medication behaviors. The innovations in science and technology advanced by our faculty improve the well-being of clients across settings, and our shared interdisciplinary efforts strengthen the quality of health care.

When our alumni and friends are active supporters participating in our mission, all are involved in enhancing the future of nursing and the School. At the close of *Campaign UConn*, (summer '04) we had raised well over two-and-a-half million dollars for programs. Through your continued support, we are able to continue to provide our students with the best educational opportunities and environment for learning. We are indisputably a primary player in health care in the State. Please feel free to contact us at any time if we can be of assistance to you.

Six principles direct the School's philosophy:

- P**rofessionalism in behavior, presentation, and conduct
- R**espect for others, richness, and diversity, and self
- A**ccountability for actions
- X**cellence in practice, research, teaching and service
- I**ntegrity and inquisitiveness
- S**ervice to students, the profession and community

Advancing the Science of Nursing in our Communities

Nursing tops the list of occupations with the largest job growth in our State (Connecticut Department of Labor). By 2010, an additional 6,180 nurses will be needed for new positions and to fill retirement vacancies. Advancing the science of nursing in our communities and helping to ease the State's nursing shortage, our School has been involved in several well-recognized initiatives.

In September, 2004, the School of Nursing finalized approval from the Connecticut Department of Higher Education to deliver the master's core curriculum to the greater Waterbury area, following through on an initial request from Waterbury Hospital. Three public higher education institutions (Naugatuck Valley Community College, Western Connecticut State University, and the University of Connecticut) signed the new Nursing Pathways Collaborative. This landmark agreement streamlines access for Naugatuck Valley Community College graduates to Western Connecticut State University (for their bachelor's degrees), and then to UConn for their master's



degrees. All three institutions share in recruitment, admissions, and student advising activities. Endorsed by Waterbury and St. Mary's Hospitals and other Waterbury-area health care services, this new collaborative serves as a springboard for similar agreements to address the state's critical workforce needs by capitalizing on existing resources. Christine Johnson '77 MS, RN, newly hired Collaborative coordinator, advises students, oversees the Collaborative, and teaches the master's program core courses at the Waterbury campus.

Another regional project involves the revision of the School's articulation agreement with Three Rivers Community College in Norwich, CT. This compact, designed to provide seamless access to baccalaureate nursing education for graduates of the Three Rivers General Studies program, was so successful that we have had to cap the number of students admitted. The School's current undergraduate enrollment has increased from 443 to 610 in just three years putting a burden on resources and mandating careful management of student numbers.

At Avery Point in Groton, Assistant Professor Sherry Bassi, EdD, APRN, BC, has been instrumental in teaching and advising nursing students from that campus. Avery Point is committed to supporting access to nursing in southeastern Connecticut.

The Master's Entry Into Nursing (MbEIN) program continues its successes, with graduates achieving licensure and performing admirably in the workplace. MbEIN students complete 15 credits per semester (spring, summer & fall) incorporating classroom time and 16-21 clinical hours per week for an entire calendar year. Despite the rigorous program

requirements, 150 applied for the 2005 MbEIN class to which 32 students were admitted; and 10 students are already enrolled for 2006.

Exciting master's program changes are also underway. We are among the 150 schools nationwide involved in development of a curriculum for Clinical Nurse Leaders (CNL) and are actively involved in collection of student data to identify the 'personal characteristics' these students will bring to the CNL role. In spring, 2004, faculty approved a generalist master's program that will allow students to complete a 24-credit degree to prepare them conceptually in advanced practice nursing theory. They may continue in clinical specialty areas by completing a post-master's certificate in any of the master's tracks offered by the School.

Additionally, faculty are involved in reactivation of the psychiatric/mental health track. Our current tracks in the master's program continue to be strong and include the following areas of study: Adult Primary Care, Acute Care, Community Health Nursing, Patient Care Services: Systems Administration, and Neonatal.

Thanks to the leadership of clinical faculty member Rosanna Colangelo, MSN, RN, Clinical Instructor, the School participated in development of a summer clinical internship in partnership with Eastern Connecticut Health Network that won a national award from Sodexo. The partnership generated a paper published in *Nursing Management*, and has increased student enrollment from five to eight students per year in its two years of operation. Students who have successfully completed their junior year apply for this 10-week, 32-hour-a-week, paid program where they'll work with an assigned RN preceptor.



Seniors and MbEIN students provide health education, disease prevention, and treatment through CareLink, an award winning model program and partnership between the Visiting Nurses' Association of CT and the School of Nursing. Members of the MbEIN class of 2004 ran successful blood pressure and diabetes screening activities with residents of Mount Pleasant apartments and received kudos for their service in the New Britain Herald. Above, in the early weeks of her 12-month MbEIN education, Asmait Yohannes '04 MbEIN, was photographed practicing using a syringe on a mannequin in the simulation lab.

Of final note, faculty growth and research development is being supported through new initiatives. The Toner Fund (\$225,000 donation), has been established to support pre-award research activities of faculty and doctoral students. This fund, initiated from a bequest, will be self-supporting as faculty move beyond intramural funding to secure extramural grants. This year, we will focus on advancing the research mission of the School, sustaining and extending our faculty members' diverse and innovative programs of research. The School's well-established doctoral program and commitment to nursing research throughout the curricula provide an exceptional environment to facilitate ongoing faculty and student success, with research development, grant submission and management, and scholarly productivity on the rise.

Our New Faculty



Barbara Bennett Jacobs '02

PhD, MPH, RN, Associate Professor

Dr. Barbara Bennett Jacobs earned her baccalaureate degree in nursing from Georgetown University, a master's degree in public health from Yale University, a master's degree in family nursing from St. Joseph College, and a doctor of philosophy degree in nursing from UConn. In 2004, she completed a two-year fellowship in bioethics at the Center for Clinical Bioethics at Georgetown University Medical Center where she is currently an affiliate faculty member. Her professional experience includes clinical emergency nursing, emergency medical services, public health planning, implementation of nursing educational programs for the State of Massachusetts, and planning and implementation of advanced life support services for the City of Boston. Jacobs, as Boston City Hospital's Paramedic Training Coordinator, educated the first paramedics for Boston's EMS system and was recently awarded a recognition award for that service at Boston EMS's 25th anniversary. Jacobs designed the curriculum and coordinated the first and second Flight Nurse Educational Programs as part of Hartford Hospital's LIFE STAR helicopter program. Jacobs formerly served as an Assistant Professor of Nursing at St. Joseph College in West Hartford, CT.

Dr. Jacobs is a researcher on the project called Optimizing Care of Persons Seriously Ill and/or Dying. The study is underway at Georgetown University, where it is partially funded by a grant from the American Association of Critical Care Nurses. As an active member of the American Trauma Society, Jacobs is collaborating with Georgetown University and with Hartford

Hospital's Trauma Program to conduct research related to a Best Practice Model for integrating palliative/end-of-life care for trauma patients. Jacobs is editor of the Trauma Nursing Core Course, a textbook used by the Emergency Nurses Association in many countries. She has various chapters in well known textbooks, and over 40 published manuscripts in journals.



Mary Ann Cordeau '04

PhD, RN, Undergraduate Clinical Coordinator, Instructor & Assistant Curator, Josephine A. Dolan Collection

Dr. Mary Ann Cordeau has a master of science degree in nursing education from Southern Connecticut State University and her bachelor and associate of science degrees in nursing, both from Quinnipiac University. She received a doctor of philosophy degree in nursing from UConn in 2004. Previously, Cordeau practiced 'nurse-caring' (the unique caring provided by nurses) at John Dempsey Hospital and Warren F. Kaynor Technical School, and taught nurse-caring at Warren F. Kaynor Technical School and Quinnipiac University. As Clinical Coordinator at UConn, Cordeau is actively developing new partnerships with our community partners and clinical sites. Having recently completed her first semester in this challenging

role Cordeau remarks, "I enjoy interacting with the students and watching them successfully progress through their clinical experiences."

Dr. Cordeau was awarded the School of Nursing 2003 Josephine A. Dolan Distinguished Service Award for her voluntary efforts as Assistant Curator of the Josephine A. Dolan Collection. Her dedication, and her involvement in maintenance and preservation of the collection, have burgeoned since she first became interested in nursing history as a doctoral student. Along with her major advisor, Dr. Eleanor Herrmann, Curator of the Josephine A. Dolan Collection, Cordeau discussed and photographed each artifact in the collection so the images could be used to teach nursing history via an electronic and/or interactive format. Cordeau continues to collect and preserve the artifacts as well as design exhibits that highlight theoretical, technical, cultural, and social aspects of nursing history. She is a member of the American Association for the History of Nursing. Currently, Cordeau is presenting her research to various groups and organizations interested in the history of American Nursing. She has been awarded numerous honors for her dissertation, *Acts of Caring: A History of the Lived Experience of Nurse-caring by Northern Women During the American Civil War*.



Yu (Philip) Xu

*PhD, RN CTN, Associate Professor
Community Health Nursing Track, Coordinator*

Born and raised in China, Dr. Philip Xu has a diverse academic career. He taught at two Chinese universities for six years before coming to the United States for his doctoral education at SUNY-Buffalo in 1991. He ventured into nursing at an associate degree program level, two weeks after he defended his dissertation in 1995. While working as a staff nurse at a local hospital in Mobile, AL, Xu finished his master's degree in nursing science in community health (1999). Xu taught at the University of South Alabama College of Nursing from 1999 to 2004 and has been a Certified Transcultural Nurses (CTN) since 2000.

Dr. Xu's current research program focuses on internationally educated nurses (IENs) working in the United States. His long-term goals are to design interventional programs to facilitate successful adaptation and integration of IENs into the challenging U.S. healthcare environment, and to develop theory and instruments to explain and measure behaviors regarding the adaptation and integration.

Dr. Xu provides service to the profession by acting on editorial boards as a journal peer reviewer, reviewing federal nursing program grants, and consulting nationally and internationally. He has made dozens of professional presentations at local, regional, national, and international levels. Xu has been awarded five research grants and published multiple scholarly articles in peer-reviewed scholarly journals since 1999. Most recently, Xu guest edited a special issue on Cultural Diversity for the *Journal Home Health Care Management & Practice*.



Antonia (Toni) Nelson '03

PhD, RNC, Assistant Professor

Dr. Toni Nelson received a bachelor's in nursing science from Boston College in 1983, a master's in nursing science from Western Connecticut in 1999, and a doctor of philosophy degree in nursing from UConn in 2003. Her professional

clinical background is primarily in the neonatal intensive care unit and maternity specialty areas.

Dr. Nelson's dissertation research at UConn was a phenomenological-hermeneutic investigation of the experiences of older, first-time mothers. Prior to coming to UConn, Dr. Nelson was an Assistant Professor of Nursing at Saint Joseph's College in West Hartford, CT.

Dr. Nelson's research interests include mothering, qualitative meta-synthesis, and situation-specific theory development. Recently, she began a new program of breastfeeding research. Current projects include continued development of a situation-specific theory of breastfeeding, a meta-synthesis on breastfeeding, and a phenomenological study of professional breastfeeding support. Her long-term goals include development of an intervention program to increase breastfeeding exclusivity and duration among low-income and minority women.



Deborah Shelton

PhD, RN, BC, Associate Professor

Dr. Deborah Shelton earned her bachelor's in nursing science from the University of Bridgeport, her master's degree in nursing from the University of Washington in Seattle, her doctorate in nursing from the University of Virginia, and completed post-doctoral work at Johns Hopkins University in Baltimore, MD. Throughout her career, Shelton has been a strong advocate for the health and well-being of children, youth, and their families, especially those incarcerated or at risk for early involvement with the juvenile justice system. Through her clinical practice, research, and involvement

with various task forces addressing this vulnerable population, she has drawn attention to the contemporary failures inherent in child mental health policy which has led to an increasing number of children and youth who are at the interface of the criminal justice, mental health, and child welfare systems.

Prior to coming to UConn, Dr. Shelton was an Associate Professor in Child-Adolescent Behavioral Health at Catholic University of America School of Nursing, Washington, DC. She has also been a faculty member at Howard University, and the University of Maryland. She is currently in the last year of a three-year grant focusing on a prevention strategy for minority youth. The grant, entitled Leadership, Education, Advocacy and Development, was funded by Health and Human Services Office of Rural Health for \$786,000.

With over 20 years of clinical experience, Shelton has conducted over 14 research studies, published 30 articles, and presented at 40 national and international conferences. A recipient of numerous awards, such as, Nurse of the Year, Washington, DC 2003, she recently received a lifetime achievement award from the International Association of Forensic Nurses. Shelton has been described as a "forensic nurse trailblazer."

From South Africa, to Connecticut, and Even to Cyberspace

Dr. Beck has Postpartum Depression Covered



Cheryl Beck, DNSc, CNM, FAAN, Professor

Advancing the science of postpartum depression mood disorders, Dr. Cheryl Beck is involved in four research projects: two qualitative and two quantitative studies. Beck is conducting a phenomenological study over the Internet with mothers diagnosed with post-traumatic stress disorder due to childbirth. This study is examining women's experiences regarding the anniversary of their birth trauma. What is it like for mothers as their child's birthday approaches, a reminder of the day of their traumatic birth? With this study, Beck is investigating the long-term debilitating grip that birth trauma sometimes has on mothers. The research for her second qualitative study, also a phenomenological study, is taking place in one of the poorest settlements in Capetown, South Africa. This study is uncovering the experience of postnatal depression for South African women. Based on the findings of this qualitative study, Beck will use mothers' words describing postnatal depression to develop an instrument to screen for postnatal depression in this part of the world.

Beck's quantitative work focuses on testing the reliability of the Postpartum Depression Screening Scale when it is administered over the telephone. Her second quantitative study has recently been funded by the Donaghue Medical Research Foundation for the next three years. Carol Lammi-Keefe, PhD, a professor in Nutritional Sciences at UConn, is the principal investigator and Beck is the co-investigator. This is a multidisciplinary study investigating increased consumption of DHA (docosahexaenoic acid), a fat found in cold-water marine fish, in the diet of pregnant women and their resultant incidence of postpartum depression and severity of depressive symptoms.

If it can be demonstrated that increasing DHA consumption can decrease the incidence of postpartum depression and severity of symptoms, women can be counseled for the inclusion of DHA foods in their diet. The study will provide the foundation for public policy recommendations regarding diet for women of childbearing age, especially pregnant and postpartum women. Given the potential dangerous effects of some medications used for depressive disorders, study findings may also provide for a possible alternative treatment or augmentation to traditional medical treatments for women with depression during pregnancy and the postpartum period.

Assessing Confidence Levels of Spanish Nurses in Caring for Culturally Diverse Groups

UConn Nursing faculty collaborate with Professors from the University of Cartagena at the 30th Annual Conference of the Transcultural Nursing Society in Alicante, Spain. Members of the UConn team include Assistant Professor Juliette Shellman (standing on left) and Professor Emerita Henrietta Bernal (seated second from right). From Cartagena, Jose Angel Vargas Jimenez (standing on right) and Jose Luis Molina Contreras (seated on far right) partnered with Shellman and Bernal to collect data from nurses in the Cartagena region using the translated version of the *Cultural Self-Efficacy Scale* (CSES Spanish Version) (Bernal & Froman, 1987 & 1993; Coffman, Shellman & Bernal, 2004). Researchers will also compare and contrast levels of confidence between US and Spanish nurses. Additional presenters at the conference from UConn were Professor Emeritus Olga Church (seated on far left) and Associate Professor Kathryn Stewart Hegedus (seated second from left).





Beaming Eastern Point Students wearing their "I am a Tobacco-Free Husky" tee shirts.



*Sherry Bassi
EdD, APRN, BC, Assistant Professor*

Tobacco-Free Huskies, a pilot project and collaborative effort conducted during the spring of 2004, initiated a wonderful expanding partnership between the UConn School of Nursing and Eastern Point Elementary School. Sherry Bassi, EdD, APRN, BC, Nursing Assistant Professor, received a \$4,000 grant through the MATCH coalition (Mobilizing Against Tobacco for Children) to work on the Tobacco-Free Huskies Project with the Eastern Point School. Eastern Point School serves approximately 450 students in Pre-K through Grade Five in Groton, CT. Students attending Eastern Point represent an under-served population with the majority residing in public housing and over 55% eligible for free/reduced price meals. The State average for eligibility is 28.8% (2002-03, Strategic School Profile). As part of a service learning opportunity for Nursing 270: Public Health Nursing, students in their junior year of study helped to develop and implement a tobacco-free health education project for all students at Eastern Point School.

First-year nursing students from the regional Avery Point campus in Groton were also actively involved in some program aspects. A total of 18 UConn students and 435 elementary children participated. Incorporating the Center for Disease Control's Guidelines for School Health Programs to prevent tobacco use, the nursing students provided age-appropriate materials to teach participating children. In fourth and fifth grade classrooms, UConn students used materials such as the Tar Wars Curriculum, but for the younger grades puppetry and storytelling were introduced to communicate tobacco-free messages.

All participants received an "I am a Tobacco-Free Husky" tee shirt and all elementary students completed a poster describing what they had learned. The culminating event of this collaboration was a Friday night "Family Night" where over 350 students, their parents, teachers and the UConn students gathered to socialize and learn as a community. Highlights of the evening included an appearance by Jonathan, the UConn mascot, during the pizza dinner.

Parents were able to view their children's posters displayed throughout the school. Older children and their parents viewed a gripping anti-tobacco video produced by the MATCH coalition, entitled Beyond the Smoke Screen. Afterwards, all participants retired to the gym for an awards ceremony. Awards were presented for the posters of one student from each class. Judging was completed by UConn students, and a grand announcement named the selected poster that would represent Eastern Point School at the national Tar Wars poster contest. UConn students offered various display tables that parents visited to collect additional material about smoking. Ten parents also signed up for a smoking cessation program offered by the Ledge Light Health District. The evening concluded with all students and their families dancing to the music of a DJ. Currently, this collaboration has expanded its focus to include health education regarding the epidemic of childhood obesity.



Scholarship recipients stand proud at the annual Scholarship Recognition Brunch Saturday, October 2, 2004. During the '04-'05 academic year, the School of Nursing granted 26 scholarships to 34 students with awards totaling over \$75,000.

UConnect to Nursing



Private support from alumni, friends, corporations and foundations provides the School of Nursing vital funds to advance its academic, research and service programs.

The School seeks to secure financial support in three crucial areas:

First, to endow chairs and professorships to attract and retain outstanding faculty, critical for any outstanding school. Endowed chairs are key to excellence, as they provide flexibility for innovative faculty research initiatives and attract internationally eminent scholars – academic leaders who can, in turn, attract other top researchers, teachers, and graduate students to the school.

Second, to increase scholarship and fellowship support for undergraduate, certificate, master's, and doctoral students through endowed and restricted scholarships.

Strong academic programs, aided by strong scholarship and fellowship support, are fundamental attributes of a top national

public research university. High-achieving students typically receive scholarship offers from multiple sources outside the state. To recruit and retain them, the School must be able to compete academically and financially, or risk losing students to out-of-state schools, ultimately draining future leaders away from Connecticut's workforce.

Finally, the School seeks to enhance support for existing programs – including lectures, research seminars, and visiting scholars – as well as new programs.

Enriched programs offered outside the classroom and laboratory are providing students with numerous educational opportunities that create an environment in which creativity and discovery lead to new levels of achievement.

For additional information on giving opportunities at the School of Nursing, please contact Brian J. Lachapelle, Director of Development, at (860) 486-6945 or via email at blachapelle@foundation.uconn.edu.

The School of Nursing gratefully acknowledges those individuals and organizations who have made leading gifts to *Campaign UConn* designated to the School of Nursing.

\$200,000 to \$999,999

Mary M. Connelly '53, '54*
Patrick & Catherine Weldon Donaghue Foundation
Paul L. Jones*
Estate of Pauline A. Toner

\$100,000 to \$199,999

Donald G. Brenner '75
Kathryn E. Connelly*

\$50,000 to \$99,999

Emma S. Kenneday*
Estate of Ruth E. Osgood

\$25,000 to \$49,999

American Lung Association
Norman L. and Patricia W. '69 Bender
Frank P. Chinigo
Ray '56, '01H and Carole J. Neag
Robert E. and Margaret S. Patricelli
David M. Presnick '81
Pricewaterhouse Coopers Foundation
Ellen J. Rice
Carmen L. Vance and Janice A. Thibodeau '66
Roslyn Zlotnik

\$2,500 to \$24,999

Beiersdorf, Inc.
Lois A. Benton '54
Donald W. '55 and Carolyn G. '51 Capellaro
Frederick A. and Elisabeth C. '69 DeLuca
Josephine A. Dolan
Charles E. Goosman
Hartford Health Care
Joel T. and Kathleen A. '74 Hiatt
Mary E. Hobson '77, '86
Fred M. Hollfelder
Lenworth M. Jacobs, Jr. and Barbara B. Jacobs '02
Yolanda Johnson '96
Michael Kraynak, Jr. and Patricia M. Kraynak '53
Shirley S. Langford '65

Manuel E. Morlote and Evelyn N. Gonzalez-Morlote '94, '98

The Savings Bank Life Insurance Company
UConn School of Nursing Senior Class of '99
UConn School of Nursing Senior Class of '00

VNA of Southeastern Connecticut

\$1,000 to \$2,499

Allen W. Benton '58, '62*
Cigna Corp.
Arlyne L. Della Donna '58
Delta Air Lines, Inc.
Duke Energy Corporation
David J. Dzurec, Jr. '73 and Laura C. Dzurec '74
Pauline M. Fahey '51
Donald J. and Dorothy S. '53 Fortman
Pauline C. Gamer '58
Brian and Lisa Marie W. '91 Griffiths
Beth A. Hollfelder
Friends of Richard J. Hollfelder
James W. and Louise W. '82, '91 Honiss
Interim Health Care
Joan R. Kenny '66
Lockheed Martin Corporation
Earl McDaniel & Associates
Middlesex Hospital
New Britain General Hospital
Joseph J. and Dorothy A. '65 Oswald
Pharmacia Corporation
Michael C. and Barbara P. '66 Phillips
Jean N. Plasan '50
Starcom
Dorothy M. Trebisacci '71
UConn Health Center
Vantislife Insurance Company
Waterbury Hospital

Foundation FY 1995-2000

\$50,000+

Estate of Pauline A. Toner
Paul L. Jones*

\$25,000 - \$49,999

Donald G. Brenner '75
Ray '56, '01H and Carole J. Neag
Roslyn Zlotnik

\$10,000 - \$24,999

Elsa Adomat*
Donald W. '55 and Carolyn G. '51 Capellaro

\$5,000 - \$9,999

Norman L. and Patricia W. '69 Bender
Frederick A. and Elisabeth C. '69 DeLuca
Robert E. and Margaret S. Patricelli
The Savings Bank Life Insurance Company
Janice A. Thibodeau '66

\$1,000 - \$4,999

Lois A. Benton '54
Arlyne L. Della Donna '58
Manuel E. Morlote and Evelyn N. Gonzalez-Morlote '94, '98
Joel T. and Kathleen A. '74 Hiatt
Fred M. Hollfelder
Maureen F. Hollfelder
Shirley S. Langford '65
Robert A. Matheson '41*
Joseph J. and Dorothy A. '65 Oswald
Rosemary Scricca '82
Starcom
VNA of Southeastern Connecticut

\$500 - \$999

Dorothy J. Fishman
Frank '66 and Gayle A. '69 Gabrielli
Hartford Health Care
Mary E. Hobson '77, '86
Beth A. Hollfelder
Middlesex Hospital
Richard C. '61, '69, '81 and Patricia M. Rice
Roy A. Balkus and Teddi M. Therkildsen
Dorothy M. Trebisacci '71
UConn Health Center
Waterbury Hospital
Carol A. Wetmore '82
Yale-New Haven Health Center

\$250 - \$499

Katherine F. Colangelo '59
Steven H. Rogers '73 and Barbara J. Depray '72
Victor F. and Elizabeth K. '59 Fumiatti
James W. and Louise W. '82, '91 Honiss
Brian Lachapelle
Michael J. and Wendy B. '84 McCormick
Julie A. Muth '95, '98
Marcia E. Neff '71, '74
Michael C. and Barbara P. '66 Phillips
Daniel D. Presnick*
David H. and Ann W. '64 Rhineland
Sharon M. Sideranko '87
Elizabeth B. Zeman '70

We gratefully acknowledge those individuals, corporations and foundations who have made gifts from July 1, 2003 to June 30, 2004.

\$100 - \$249

Charles G. and Ola M. Ames
Anonymous Foundation FY 2003
T. W. Brooks and Rose Marie Bagioni '84
Stephen J. Starger '65 and Polly T. Barey '67
Christine P. Bauler '74
Elizabeth T. Beaudin '74
Nancy S. Bennett '64
Sharon Bidwell-Cerone '70
Edward T. '49 and Jane A. '50 Borkowski
Carl '74 and Jean E. '75 Bouchard
Guy and MaryLou S. '69 Bradley
F. Robert and Barbara A. '62 Brillhart
James T. and Judith L. '58 Cardinal
Ann M. Carey '58
Louise P. Carvalho '74
Micheline M. Cignoli '71
Jeffrey C. Ciucias '73 '79
Rosemarie L. Coney '65
Rosemary C. Courtney '56
Heidi Cousin '74
Nancy M. Crider '60, '74
Susan H. Cummings '62
Christopher and Kathleen M. '83, '86 Demers
Marcia J. Dobrowski '69
David J. Dzurec, Jr. '73 and Laura C. Dzurec '74
Arthur J. Engler



Carole Vestali Neag (left) with Jean Sheerin Coffey PhD student recipient of the Anabele Sharp Nursing Scholarship.

Pauline M. Fahey '51
Salvatore V. '58 and Anita '57 Faulise
Arthur W. '43 and Rhoda '47 Feinstein
Leon S. '67 and Sharon W. '69 Field
Carol M. Floriani '68
Jacqueline C. Fusco '85
Gregory J. and Helen K. '62 Gallivan
Sarah J. Ghantous '89
James I. Gilman
Scott J. Murphy and Jadwiga Gocłowski '73, '85
Phyllis R. Gofstein '49
Laura E. Govoni '82
Maureen Groden '90
Lucille G. Gullotta '65
Debra P. Hastings '95
Janice E. Hayes
Matthew J. and Marie E. '70 Hayes
Katharine D. Henderson '67
Charlotte Hickey '68
Barbara W. Hogan '51
Robert G. '85, '89 and Rose A. '86 Holloway
Barbara P. Houghton '64
Joyce F. Houser '66
Ilda L. Hunter '55
Melvyn and Pamela G. Hyman
Julia Ireland*
Michael E. '87 and Alice J. '86 Ivy
Doris J. Jablonski

Honor Roll of Donors



From left to right: Estelle Presnick, Barbara Presnick, Michael Lyon, Jane Presnick-Lyon, and Jessica Leeman student recipient of the Presnick Family Nursing Scholarship.



Student recipients of the Olympia Cantadore Vestali Scholarship, Sarah Hunt (left) and Rita Kensah (right), pictured with Carole Vestali Neag (center).

\$100 - \$249 (continued)

Patricia M. Jacobson '75
 Elizabeth A. Jensen '59
 JFK Cheer Fund
 Christine M. Johnson '77
 Edna E. Johnson
 Robert A. '52 and Phyllis T. '53 Jones
 Marilyn J. Joseph '90
 Priscilla Kathan '56
 Peter D. and Nancy D. '68 Keneffick
 Robert J. King '82
 Ronald J. Kolanowski
 John E. and Margaret M. '98, '99 Kreitler
 Barbara A. Krzyzek '70
 Joanne Q. Kudzma '59
 Patricia L. Lamont '58
 Ruth E. Lenz
 Richard I. and Clare B. Lester
 Jeanne J. Levasseur '00
 Barbara B. Lobeck '72
 Judith K. Madeux '71, '86, '00
 Roxann L. Mankouski '83, '96
 James A. and Matilda Matheson
 Christie Mauro
 Janice B. McIsaac '84
 Clyde D. McKee, Jr. '63, '67 and Mary G. McKee '52
 William J. and J. Catherine McKinstry
 Elaine M. McLeod '78
 Carmella Milardo
 Claire E. Moroney '86
 Theresa B. Nahil '75
 Ann W. Neller '53
 Jean A. Nicholas '70
 Marilyn A. Ollayos '63
 Helen L. Pierce '57

Jean N. Plasan '50
 E. Carol Polifroni
 Barbara L. Presnick
 Paul Rothbart '75 and Diane M. Presnick '75
 Frank and Estelle J. Presnick
 Joan L. Quinn '74
 Carol H. Robinson '61
 Cynthia E. Roler '73
 Marc R. and Priscilla H. '65 Rose
 Judith A. Rusconi '67
 Nancy T. Russell '75
 Judith W. Ryan '65
 Lauren R. Savage '99
 John R. '90 and Theresa A. '00 Schneider
 Phyllis H. Scribner '60
 Rosemary A. Shea '54
 Gary R. and Erica P. '81 Siddell
 Marian H. Snyder '64
 Stanley and Blyse A. '75 Soby
 Barbara A. Starr '70
 Debhora Sutherland '89
 Michael A. '72 and Laurel A. Tarcinale
 Neil A. Sullivan and Dori P. Taylor-Sullivan '75, '81, '90
 Charles C. and Barbara S. '72 Thompson
 Lynn A. Thompson '90
 Richard W. and Ellen M. '79 Tim
 Tara N. Trimarchi '92
 Cynthia H. VanWinkle '81
 Nu Vo
 Susan M. Weady '64, '87
 Louise H. Westover '63
 Marguerite B. White
 H. Joseph and Clara A. '56 Williams
 Gardner F. and Elizabeth S. '54 Wood
 Sandra A. Youmatz '77


Under \$100

Margaret Acampora '91
 Pamela J. Adamovich '72
 Frank and Margaret S. '71 Adams
 Alan G. Girelli '81 and Cheryl L. Aglio-Girelli '76, '83
 Todd W. '91 and Rachel M. '92 Akerley
 Renee P. Aldrich '83
 Kathleen M. Ambach '81, '85
 Judith P. Ammirati '82
 Frank I. and Edith I. Andersen
 Marion Anderson '52
 Dyan A. Aretakis '78
 Mary S. Ariosto-Coe '80
 Katherine B. Armstrong '84
 Eric M. '69 and Patricia D. '72 Arnio
 Gloria M. Arons
 Association of Jewish Registered Nurses
 Ruth M. Atcheson
 Mary L. Auger '61
 Erika J. Ayers '94
 Michael A. Bafuma '98
 Muriel L. Banquer '48
 Linda A. Barile '67, '94
 Dana M. Barr '88
 Frances E. Barton '53
 Catherine A. Bashore '82
 Cathie J. Beausoleil '72
 Harry L. and Beverly A. '65 Beckwith
 Nazeli Bedrossian '93
 Mary A. Behrens
 Eileen S. Bellman '63
 Marybeth Bender '81
 David S. and Sharon L. Bender
 Dorothy M. Bennett '56

Kimberly H. Bennett '95
 Stephen J. '92 and Abbi R. '92 Bentz
 Robert A. '79 and Donna M. '79 Benzinger
 Ruth M. Bergeron '98
 Cheryl A. Bewino '80
 Neil H. and Ellen L. '68 Blinderman
 Virginia T. Blocker '51
 Barbara Boardman '50
 Cheryl Y. Boland '87
 Deborah Bolvilsky
 Brandon L. Bonin '03
 Joseph '82 and Laura D. '85 Borrelli
 Peter G. '67, '69, '72 and Elisabeth A. '68 Boucher
 Edgar G. and Virginia A. '60 Boughton
 Jeannine M. Boulanger '78
 Eileen A. Boulay '94
 Diane L. Bourbeau '73
 Denise C. Bowers '84
 Priscilla E. Bradford
 Helen E. Bradley '71
 Jeannine L. Bradley '85
 Kristen M. Braun '98
 Joanna B. Brier '92
 Elizabeth A. Briggs '48
 Susan J. Brillhart '84
 Bonita L. Brown '73
 Robert E. and Helen L. '63 Brown
 Janice M. Brown '94
 Geraldine S. Buchholz '58
 Raymond A. Lachance and Kathleen M. Burdick-LaChance
 Mary J. Byer '80
 Helen Cain '70
 Diane D. Callahan '63

Frances Campbell
 Karen C. Cardillo '86
 Leslie Z. Carey '72
 Norman E. Kuzel II and Alisa D. Carlson '95
 Doris E. Carr '62
 Elaine A. Carta '59
 Carole Casale '64, '77
 Jennifer M. Casavant '99
 Marlene Charest '58
 Kevin J. '85 and Sara S. '85 Chase
 Barbara M. Christian '87
 Anthony Mangiacopra and Anne Chubet-Mangiacopra
 John F. and Catherine A. '79 Clark
 Coryn B. Clark '95
 Jonathan C. and Sandra G. '67 Clark
 Cathy A. Clemence '79
 Donna L. Connell '87
 Kevin C. '74, '79 and Janet M. '67 Connors
 Cynthia M. Considine '74
 Priscilla E. Coons '63
 Dawn A. Cooper '96
 Richard and Elizabeth W. '57 Cordeau
 Richard T. '74 and Lile S. '77 Couture
 Phyllis Crary
 Margaret A. Crepeau '51
 Thomas J. and Darlene Croke
 Thomas P. '85 and Jacqueline I. '84 Crowley
 Frances Cuomo
 Molly A. Curtis '52
 Catherine J. Cusack '94
 Barbara D. Czerniewski '76
 Millicent H. Daddieco '57

Rebecca S. Dagenais '97
 Cynthia L. Dakin '01
 Tracy A. Dalzell-Hill '89
 Carole A. D'Amato '78
 Frank P. and Ednamae '59
 Dambeck
 Catherine D. D'Aniello '77
 Marilyn D'Aquanni '64
 Franklin A. and Nancy F. '61
 Darius
 Lloyd A. and Susan K. '74 Davis
 John P. Desjardins '89
 Linda L. Desrochers '70
 Margaret M. Dezinno '70
 Mary A. Diamond '69
 Barbara B. DiBattisto '53
 Mary B. Dickes '51
 Jane K. Dickinson '00
 Ronald A. and Kathleen '75
 Dietter
 Leslie A. Dolby '83
 Nancy E. Donegan '73
 Jean D'Orio '51
 Martin '78 and Elizabeth A. '78
 Drobiarz
 Sandra D. Dunstan '81
 Sherry E. Dutton
 Harriet R. Ebert '65
 A. Eichholtz
 Peter and Kathryn A. '84 Eliason
 Christine B. Eller '72
 Lucy P. Emple '80
 Keith A. and Linda S. Erickson
 Norma V. Esposito '55
 Jaime L. Evans '98
 James E. and Monica P. '98, '99
 Farina
 Charles F. and Dorothy P.
 Farnham
 Jill Feldman '85
 Stephen J. Fennessy, Sr. '78 and
 Patricia Y. Fennessy '76
 Doris E. Ferner
 Evelyn W. Fisher '67
 Ann E. Fleischman '75
 Patricia Fleming '82
 Thomas '02 and Silvia '75 Flynn
 Raymond J. and Diane K. '93
 Foley
 Karen R. Foley '90
 James W. and Lauren M. '82
 Foote
 Carol C. Forand
 Robert W. '82 and Catherine L.
 '83 Ford
 Donald J. and Dorothy S. '53
 Fortman
 Lisa S. Foster '88
 Karen L. Fowler '93
 Kenneth P. and Karen A. '78 Fox
 Patricia C. Fox '49
 Phyllis H. Fox '59
 Susan D. Freeman '61
 Cheryl S. Frenkel '82
 Wendy H. Furniss '89
 Joseph Lemieux and Kathe A.
 Gable '92, '97
 Katharine L. Gabrielson '66
 Jeryl V. Gagliardi '57
 Diane D. Gagnon '67
 Paul H. '78 and Lee A. '79
 Galuska
 Dora V. Garabedian '79
 Donna E. Gardner '82
 Bette J. Gebrian '77, '93
 Danielle L. Gennusa '92
 Kevin A. '83 and Jennifer R. '85
 Gerety
 Christine L. Gies '65
 Lois R. Gillespie '67
 Zelma E. Gladu '96
 Edward M. and Judith L. '78
 Goldberg
 Stephen R. Goldblatt '87, '90
 Berney J. '87 and Carol E. '78
 Golden
 Robin B. Goldstein '74
 Christopher P. Craig '79 and
 Donna E. Gonsalves '80
 Leonie R. Goodfriend '53
 Susan E. Goodstine '73
 Ruth C. Gordon '68
 Doris M. Gould '95
 Joan Grande '62
 Winifred W. Granger '55
 Susan W. Grant '95
 Indulis and Anda '57 Grasis
 Leslie N. Gray '67
 Deloris D. Green-Robinson '81
 Kathryn G. Gregory '65
 Evelyn M. Gregson '92
 James E. and Beth A. '74, '97
 Greig
 Kelly S. Grimshaw '88, '95
 Gary '82 and Natalie '81, '85
 Grosner
 Valerie Grzybowski '83
 Mary G. Hadjian '76
 Judith C. Hall '62
 George '68 and Joyce S. '68
 Hanna
 Lynn K. Hannon '58
 Frederick and Sandra A. '70
 Harrington
 The Hartford Financial Services
 Group, Inc.
 Christine S. Haswell '64



University of Connecticut
**School of Nursing
 Dean's Fund**

How can *you* impact the life of
 a UConn Nursing student?

Respond to the Dean's Fund appeal for support.
 Annual gifts to the School of Nursing help:

- Provide scholarships
- Improve clinical laboratory infrastructure
- Send students to N.S.N.A. conferences

Make your gift to:
 The *University of Connecticut Foundation, Inc.*
 for the *School of Nursing Dean's Fund.*

www.nursing.uconn.edu
www.foundation.uconn.edu
annualgiving@foundation.uconn.edu

Deborah A. Hatch '65
 Deborah D. Hatzipetro '84
 Elizabeth L. Haxo '49
 Siward Hazelton '73
 Gene A. and Patricia A. '76
 Heavens
 Nancy L. Hennes '70
 Paul Blow and Amy S. Hendrick '73
 Marie Heslin '00
 Joyce M. Higgins '77
 Ellen V. Hintz '71
 Thomas M. Hogan, Jr. and Joan
 G. Hogan
 Wendy E. Holland '99
 Arnold E. and Jan L. '70
 Holtberg
 Joan C. Hoover '84
 Shirley C. Horn '54
 Mary O. Houle '77
 Nancy E. Howland
 David A. '87, '99 and Kristen M.
 '87 Hoyle
 Jack A. '74 and Nancy R. '76
 Huber
 Marilyn F. Hulstander '73
 Donald F. Hunt, Jr. '93 and Beth
 E. Hunt '86
 Karen A. Hunter '83
 Lawrence and Charlotte F. '83
 Hyatt
 Sandra A. Iadarola '73
 Frank G. Iezzi '80
 Jeannette E. Jakobiak '63
 Mildred P. Janeczek '62
 John F. '64 and Alexine L. '63
 Janiszewski
 Sheila M. Jenkins '85
 Walter K. and Barbara W.
 Jesudowich
 Joan H. Johnson '59
 Lois M. Johnson '68
 Malia S. Johnson '56
 Kathleen L. Jolley '61
 Karen Jones '65
 Sherry M. Jones '75
 Charles and Theresa V. '77 Jones
 Kerrie G. Jordan '75
 Joseph K. and Jean D. '78 Kane
 Charlotte H. Karabin '51
 Jodi B. Katz '92
 Louise L. Keane
 Barbara Keaveney '94
 Linda T. Keena '61



From left to right: Richard Hoffelder Jr., Ellen Hoffelder Roback, Beth Hoffelder, Maureen Hoffelder, Surheil Luciano student recipient of the Richard J. Hoffelder Memorial Scholarship, and Kim Hoffelder.

Honor Roll of Donors

The Charles Lewis Beach Society honors the many individuals that support the University through will, trust, retirement plan and life insurance gifts. The Society also honors donors who make gifts that will enhance their or a loved one's financial position, and ultimately support the School of Nursing's initiatives.

A teacher and researcher in dairy production, Charles Lewis Beach was asked to husband the resources of the Connecticut Agriculture College in 1908. In 1933, President Beach established a fund through his will to honor the memory of his wife, Louise Crombie Beach, and to provide enduring support to the University.

Please join Elizabeth '74, '80 and Stephen Beaudin, and the 700 members of the Charles Lewis Beach Society University-wide whose gifts ensure excellence for the future.

To advise the School of Nursing about your gift, or to request confidential information about will, trust, retirement, life insurance, or income-enhancing plans, please contact Peter McAvoy, JD at (800) 269-9965, or pmcavoy@foundation.uconn.edu.



As a doctoral student, I am working on my third degree from the School of Nursing. The School provided me with a foundation for a rewarding and successful career. When my husband Steve and I sat down to prepare our wills, we decided to do our part to help the School carry excellence in nursing education into the future. We are glad to give back in support of the generations of students to come.

Stephen and Elizabeth '74, '80 Beaudin Members, Charles Lewis Beach Society



School of Nursing Beach Society Members

Stephen and Elizabeth '74, '80 Beaudin	Charles Goosman
Maxine '59 and Colin Bloor	Carol Watt-Andrews '64
Carolyn '51 and Donald '55 Capellaro	Mary Connelly '53*
Katherine Connelly*	Ruth Osgood*
Marcia Doohen*	June Prue*
Pauline Fahey '51	Emma Smith Kennaday*
	*Deceased

Under \$100 (continued)

Alison B. Kelley '02	Lucy A. LaCava '62
Thomas P. '77 and Deborah S. '78 Kelley	Kimberly J. Lane '89, '98
A. P. Obelnicki '85 and Kathleen L. Kelliher	Carolyn H. Langer '74
Mary Ann Kendall '57	Carol A. Langston '86
Barbara E. Kent '70	Susan C. Lasker '71
Joan P. Kern '54	Donnajeanne Lavoie '63
Mary Kielbania '99	Felicia K. Leach '76
Paul and Stella B. '86 Kimball	Jeffrey A. and Theresa M. '84 Leduc
Melinda L. Kindulas '88	Mary Ellen D. Lehmann '77
Marie R. Kitch '78	Allen Lenz
Janice A. Klein '85	Sophia Lenz
Carrie S. Klima '02	Doris H. Lester '65
Brenda M. Knickerbocker '62	Kathleen A. Leverone '78
Carol R. Knight '58	Robbin M. Liskin '93
Doris F. Knight	Jill D. Lombardi '76
Jo A. Knight '72, '81	Michael L. '77 and Joan E. '95 Long
Beverly M. Knoch	Lenore S. Longo '94
Carol A. Koehler '85	Mark E. '82 and Tina M. '68 Loomis
Michele L. Kolios '84	Daniel and Joyce '75 Lowell
Linda M. Koski '73	Jessica M. Ludwig Drenga '01
Linda S. Kowalczyk '94	Elizabeth R. Luginbuhl '68
Mary C. Kowalec '87	Ann F. MacGillis '65, '77
Donna M. Kuhl '77	Joan A. MacLeod '82
Barbara H. Labrie '88	Joan B. Macrae '87
	Dawn L. Maibach '77, '85

Mark F. '81, '82 and Elizabeth J. '82 Makuch	William P. and Roberta C. Meaney
Edna H. Mann '47	James F. '50, '58 and Adoree L. '51 Meenan
Nancy K. Manter '64	Martin '72 and Jean P. '72 Melillo
Susanne U. Mantz '82	Rita E. Metcalf '59
Rich and Loisann Marazzi	Anne C. Miceli '90
Robert F. and Marilyn A. '64 Margolies	Nancy H. Miles '60
Rebecca J. Martikainen '76	Dorothy L. Miller '55
Larissa M. Martineau '00, '04	Judith E. Miller '87
Rosemary C. Mascia '53	Dean and Luanne C. '76 Miller
Edward M. and Anne F. Matheson	Laura C. Milliken '88, '98
John C. Matulis, Jr. '75 and Elaine E. Matulis '74	Joyce K. Millikin '67, '80
Jayne E. McCann '87	William J. '59 and Sydney E. '65 Mintz
Paul J. McCarron, Jr. '93 and N. Lynne McCarron	Amie Modigh '57
Adele McCarthy '86	Linda I. Moir '85
Cheryl E. McCarthy '69	Sandra A. Monteiro '90
Anne-Marie McClure '83	John J. '89 and Laurin B. '95 Mooney
James R. and Linda R. '72 McDonald	Angela A. Moore '89
Louise K. McFerran '52	Barbara A. Moynihan '92
Jill G. McGarry '76	John J. and Coleen H. '68 Muirhead
Sandra L. McKenna '90	Dianne M. Murphy '93
Deborah A. McKenzie '73	James P. '77 and Kathryn M. '86 '86 Murphy
Marie E. McMillan '77	Rita Z. Myjak '56
Diantha R. McMorrow '69	Kelley J. Napiello '98
	Alice M. Neary '72
	David J. Nelson, Jr. and Jill T. Nelson '95
	James G. '70 and Kathleen J. '71 Nemeth
	Virginia A. Newell-Stokes '85
	Evelyn Ni '04
	Margaret H. Ni
	Anitamarie Nichols '72
	Barbara W. Nichols '67
	Jennifer L. Nichols '81
	Katherine V. Nicholson '57
	Hollye S. Nino '64
	Lynn Nochisaki '89
	Stephen '87 and Tracy A. '87 Noell
	Susan J. Noga '77
	Diane P. Obernesser '64
	Marjorie L. Obst '66
	Edwin J. '62 and Mary Lou D. '64 O'Connor
	Dayna E. Ohotnicky '71
	Susan W. Olson '63
	Roberta M. Orne '74
	Keith J. and Suzette M. '88 Orzechowski
	Diann D. Osgood '60
	Charles D. Packard*
	Sheila Packard*

Eric A. Cope '79 and Karen A. Pagliaro '80
Michael J. '80 and Mary A. '79 Palinkos
Anne E. Palmer '80 '92
Patricia L. Pannone '73
Marylou F. Parker '88
David L. and Patricia T. '61 Parr
Alfonso C. Passero
Yvonne M. Paturynski '69
Glenn H. Orkin '79 and Nancy Paulhus-Orkin '79
Deirdre C. Penland '70
Linda M. Perfetto '95
Joan M. Perrault '66
Karen A. Peterson '53
Millicent Petrafesa*
Karen M. Petrok '84, '96
Dwight M. Pettit III and Jeanne R. Pettit '69
Beth Piantek '83
Enrico J. '83 and Linda M. '86 Picozza
Mary C. Piner '78
Christine A. Pinette '94
Jane S. Piper '69
Sandra Poplin '93
Milcah J. Powell-Daniel '94
Beverly Premo '66
C. M. Presnick '75
Daniel V. Presnick*
James A. '86 and Linda M. '85 Prota
Janice B. Proterra '87
Kathleen K. Pugliese '76
George A. '75 and Jeanne K. '78 Puglisi
Kathleen Puri '87
Maria T. Rafferty '83
William F. '81 and Melanie M. '81 Rago
Victoria Ramik '96
Robert E. and Beverly '62 Raymond
Michelle T. Renaud '72
Lewis H. and Priscilla R. '55 Reynolds
Barbara Richardson '73
Denise K. Rickevicius '94, '01
Thomas P. '83 and Donna B. '83 Riel
Ronald R. Muenchow '81 and Linda A. Riveglia '80, '83
Karen C. Robbins '80
Elizabeth A. Robinson '77
Mary A. Roche '95
Laura S. Rode '80
Carolyn B. Rogers '57
Nancy L. Rollinson '78

Honor Roll of Donors

Gary S. '82 and Sandra K. '86 Roosa	Frances K. Shashoua '81	Barbara M. Stephens '47	Russell N. Viau, Jr. and Paula A. Viau '83, '91	Gary L. Oswald and Shirley M. Williams
Donna L. Root '73	John A. and Patricia '92 Shatney	Donna F. Sterling '60	Richard D. '76 and Teresa B. '75 Wach	Terri S. Williams '86
Mary E. Ropka '77	Elaine M. Shattuck '80	Nathaniel T. Stevenson, Jr. '61 and Diane R. Stevenson '63	Peter Banks and Nancy E. Wallace '70	Voline D. Willis
Samuel and Diane M. '69 Rotondi	John F. Shea III '81	Mary Ellen K. Stolecki '85	Jean W. Warren '76	Jennifer M. Wilson '93
Mark P. and Christine M. '82, '87 Rouleau	Scott P. '89 and Lorraine G. '93 Shea	Frank M. and Pellegrina '70 Stolfi	Keith G. '76 and Judith A. '77 Weindling	Dolores M. Winans '57
Monique P. Rounseville '82	Lorraine G. Sheehan	Kenneth R. and Katherine D. '82 Stone	Tara Wesoloskie '98	Elizabeth C. Winkler '95
Norann G. Rowe '57	Nancy J. Shepard '87	Ellise M. Sullivan '69	James C. White '72	Peter T. '82 and Cindy '84 Wisniowski
Joanne Y. Rubano '78	Dorothy K. Sherer '64	Kimberly A. Sullivan '90	Charles A. '67 and Susan B. '67 Whittier	James P. '83 and Jane E. '87 Wivell
John A. '76 and Nina T. Ruckes	Lorraine P. Sibley '67	Michael and Lorelei I. '81 Sullivan	Janet M. Wicander '85	Margaret P. Wojtal '70
Joan D. Ruppenthal '57	Christina D. Sideranko '76	Christine P. Suratt '91	Karen A. Wieleba '85	Patricia L. Yee '97
Fletcher F. and Nancy A. Rush	Claudia A. Sieber '83	Edith P. Suscovich '76	Cynthia S. Wiggins '65	Walter P. Yonkaitis, Jr. '87 and Catherine F. Yonkaitis '86, '92
David A. Ruth '81	Barbara M. Sieczkowski '01	Patricia Szczech '67	Raymond F. and June S. Wilber	Sharon S. Young '93
K. E. Ryland '62	Richard P. '75 and Lori N. '78 Silkoff	Thomas E. Taft '74 and Janet M. '74 Taft	Heather A. Wilcox '94	Jeannette A. Zaglio '69
Patricia D. Salvaggio '70	Mary L. Simpson '59	Denise Tailby '75	Robert L. and Roberta G. '61 Willenkin	Christina R. Ziemba '98
Renee M. Savage '93	Katherine M. Sink '92	Tiiu Talva '65	Christine M. Williams '02	Lois E. Zink '68
Sharon G. Schaschl '65	Barbara M. Siperas '77	Salvatore R. and Linda Terenzo	Roy D. and Joanne E. '72 Williams	John and Judith M. '64 Zinn
Kathryn P. Scheirey '68	Margaret L. Sitts '68	Virginia H. Tierney '71	Karen A. Williams '95 '99	Joan S. Zito '57
Thomas N. '55 and Barbara P. '57 Schenarts	Judith R. Skidd '61	Robert W. and Theresa L. '76 Tillberg		
Michael '59, '62 and Ricki G. '60 Schless	Judith K. Smith '69	Richard D. and Valerie W. Traumer		
Tedra J. Schneider	Gordon D. '71 and Rosemary A. '71 Smith	Patricia A. Turci '89		
Stephen Schreiber	Joanna S. Snyder '57	Marita S. Tympanick '78		
Stephen C. '80 and Jean G. '81 Schuberth	Marjorie W. Soden '49	Susan T. Urrows '90		
Helen C. Scott	Fiore and Janice C. '88 Soviero	Roger V. Steenbergen and Judith A. Van Steenbergen '85		
Margaret E. Sczesny '69, '79	Hazel C. Spedding '49	Margaret M. Varner '77		
Nadine D. Seltzer '94	Suzanne M. Spence '93	Maryann Vastunas-Roe '75		
Brenda E. Sewak '91	Judith E. Spiesman '80	Donald Vensel, Sr. and Gertrude A. Vensel '53		
Bernice P. Shaker '69, '77	Michael J. '85 and Michele M. '85 Stajduhar	Irene V. Vensel '52		
	E. Jay and Phyllis G. Starkel			
	Bonnie G. Steele, ARNP, PhD '68			
	Bernice Steinert			

*Deceased

We have prepared the 2004 Honor Roll of Donors with great care. If, however, we have omitted, misprinted or listed your name incorrectly, please notify Brian J. Lachapelle of the UConn Foundation at (860) 486-6945. In some cases, the School may not yet have been notified of matching gifts. These contributions will be recognized in future publications.

What's New with You?

Name _____ Maiden/Previous Name _____

UConn SON degree(s) and date(s) conferred _____ BS _____ MS _____ PhD _____ MbEIN Other _____

Address _____

2nd Address _____

Phone number _____ E-mail _____

Primary Placement for Clinical

____Hartford____New Haven____Other _____

Current Employment _____

Work Phone Number _____ Work E-mail _____

News! Tell us a little about your job, previous work history, family, community involvements, or interests:

Are you interested in serving on the Alumni Society Board of Directors; Acting as a Class Agent/Representative, or Participating in our Mentorship Program? Yes (circle choice) No

Thank You! We look forward to hearing from you!

Please use the enclosed envelope and mail to: University of Connecticut, School of Nursing,
Attn: Kathe Gable, 231 Glenbrook Road Unit 2026, Storrs, CT 06269-2026.

Alumni President's Message



Lisa-Marie W. Griffiths '91 MS

Greetings Alums,

Our Alumni Board continues to be active in the School of Nursing. We represent graduates from the classes of 1956 to 2004. While we share a wealth of knowledge and varying nursing experiences, we are brought together by our love of UConn and what it has given us through our BS, MS and/or PhD degrees, or our Master's Entry Certificates.

The Board has been focusing on bringing in younger members by inviting nursing leaders from each undergraduate class to participate on the Board of Directors. Over the last few years we have been fortunate enough to recruit some wonderful young alumni to our board: Amy Brunquell '04, Rommy Vreeland '02, and Jocelyn Brown Libros '00. Also, Lisa Rizoli Book '03 has attended meetings and is serving as a class agent.

In a new endeavor, the Board of Directors enthusiastically supported the establishment of the School of Nursing Alumni Fund for Emergency Student Aid. To date, over \$1,000 has been distributed to seriously financially strapped students. Students received either BOOK ONLY UConn Coop gift cards for much needed textbooks, and/or financial support for enrollment in courses.

I hope you will check us out at the next Distinguished Scholars Day on April 14th, 2005. If you are interested in obtaining CEU's at this event, the ten dollar processing fee is waived for current members of the UConn Alumni Association, School of Nursing Alumni & Friends Society. Dues are a mere \$40.00 per year (with other options available--joint, life, senior, etc.). We will be holding a Board meeting following this event and welcome Alumni to stay and join us. We are always looking for ways to serve our alumni and hope you will get involved!

I am excited to announce that Geri Pearson '02 PhD, RN, CS, who currently serves as Vice President, will be our next President.

Respectfully yours,

Lisa-Marie W. Griffiths '91 MS, MA, APRN
 President, School of Nursing Alumni & Friends Society
 Lisa-Marie.Griffiths@UConn.edu

NOTECARDS



Watercolor of Carolyn Ladd Widmer Building was painted by Alice Eschholz '54 for her class reunion in September 2001.

The Carolyn Ladd Widmer building, built in 1919, was the University of Connecticut's first infirmary. It contained an open ward for patients, several private rooms, office space and a large solarium with a fireplace. The School of Nursing first occupied the Widmer Building, also known as "the cottage," in 1950 when the present day infirmary was constructed. Conversion of the building's open ward into a classroom, and the private rooms into offices, made the space suitable for academic purposes. For the Nursing School, this relieved a decade of being in confined quarters in the Home Economics building. From the mid-1950s until the 1968-69 academic year, the building was shared with the School of Physical Therapy. The significant structural deterioration and potential exorbitant costs to relocate the building prompted a decision to demolish "the cottage" in December 1996.

These are the first in a series of notecards printed by the School of Nursing Alumni and Friends Society. Profits from the sales of notecards will support Alumni Society sponsored activities and the School of Nursing.

MAILING INSTRUCTIONS:

Package of 8 notecards	# _____
@ \$10.00 each	
Shipping & Handling Charges	\$ _____
1-2 packages \$2.50	
3-5 packages \$5.00	
6-16 packages \$5.50	
17-25 packages \$7.00	
	Total _____

Please call (860) 486-0613 for cost of mailings outside USA, and for orders of more than 25 packages of notecards. Please make checks payable to: UConn Alumni Association. Send orders to: UConn School of Nursing, ATTN:

Kathe Gable
 231 Glenbrook Road Unit 2026
 Storrs, CT 06269-2026

Enthusiastic Alumni Reconnect at Reunions

Tremendously grateful for reunion class gifts directed to support the *Center for Nursing Research (CNR) Technology Fund*, the School of Nursing rejoices with an enhanced CNR lab.



Classes of '58 & '59 Reunion, October 1-3, 2004.

From left to right: Dory Park Twitchell '59, Rita Eurich Metcalf '59, Arlyne Della Donna '58, Marty Wassung '59, Kay Flanagan Colangelo '59, Rachel Taylor '59, Joanne Quinn Kudzma '59, June Russo Tirone '58, Marsha Andrews Cedrone '59, Joan Quinn '59, Diane Crosswaite Barker '59, Pat Jakubowski Welch '59, Angela Puzzo Lawler '59, Ann Molloy Carey '58



A Night to Remember Class of '69 – 35th Reunion, October 30, 2004.

From left to right: Standing- Liz Adomat DeLuca, Pat Matheson Bender, Gayle Pernicka Gabrielli, Kathe Gable (Nursing Alumni Staff), Peggy Sczesny, Dean Laura Cox Dzurec '74, Sally Marien MacDonald, Dianne "Dee" Vandegriff Rontondi, Mary Lou Carlson Bradley, Jane Simpson Piper. Seated- Nancy Rogers Verzier, Ginny Ives-Bishop, Karen Johnsen Lesmerises, Elizabeth "Betty" Jennings Antanaitis, Patricia Rhodes Daniel.



UConn School of Nursing Class of '54 – 50th Reunion, June 4, 2004.

From left to right: Standing- Alice Sutton Eschholz, Serena Shuebruk Beretta, Elizabeth "Betsy" Smith Wood, Joann Matheson Griswold, Phyllis Walford Brooket, Joanne Gross Walsh. Seated- Patricia VanWormer Karpe, Carol Hayes-Christiansen, Margaret "Peg" Watson Olson, Shirley Post Smigiel, Joan Perkins Kern, Rosemary Sasseen Shea, Patricia Clawson Fleckner.



Sigma Theta Tau, Mu Chapter Induction Committee pictured at ceremony on November 14, 2004: From left to right: Elizabeth Anderson PhD, APRN; Alison Carlson '04 MS, BA, RNC; Lisa-Marie W. Griffiths '91 MS, MA, APRN; Dianna Norris '94, '96, APRN, MS, CS; and Olga Selikhov '02, '04 MS, RN

Sigma Theta Tau International, Inc.

UConn's Mu chapter celebrated a 50th Anniversary on March 16th, 2005 at the Rocky Hill Marriott. The celebration reception was from 6-7pm, followed by dinner and presentations. Mu's first induction, recorded as initiations for many years to follow, was on March 19th, 1955. Our first Dean, Carolyn Ladd Widmer, and Agnes Ohlson were Associate members. Josephine Dolan transferred her membership to Mu as a charter member. Rosemary Dimaggio Courtney and Pauline Fahey, both charter members from 1955, assisted with planning and presenting. Past Presidents of the Mu chapter were honored, along with all the past officers who attended. The chapter is in need of active volunteers. If you can help out, please contact Joanne Blum at (860) 267-2981 or JoBlum2@aol.com.

The Carolyn Ladd Widmer Outstanding Alumni Award for Leadership in Nursing

Dr. Dori Taylor Sullivan

Dr. Dori Taylor Sullivan graduated from UConn with a bachelor of science in nursing, a master of science in nursing administration, and a doctor of philosophy in educational psychology. She has received numerous honors, most recently as a participant in the American Association of Colleges of Nursing/Fuld Foundation Leadership Fellow Program (2003-2004).

Dr. Sullivan started her career in critical care nursing and evolved into clinical instructor and clinical nurse specialist roles. From 1981 through 1988, Dr. Sullivan served in a variety of positions at the School of Nursing in Storrs, assuming the role of Director of Nursing Education and Research for the UConn Health Center's (UHC) John Dempsey Hospital in 1985 as a joint appointment. Dr. Sullivan held a variety of positions at UHC until 1998, including Assistant Vice Chancellor for



From left to right: Michael Widmer, President, Massachusetts Taxpayers Association; Dori Taylor Sullivan '75, '81, PhD, RNC, BC, CAN, CPHQ, recipient of Carolyn Ladd Widmer Outstanding Alumnae Award for Leadership in Nursing; Eric Widmer, Headmaster, Deerfield Academy.

Quality, Performance Improvement and Organizational Development. Since 1981, Dr. Sullivan has maintained a private consulting practice in management and education focusing on the role of nursing and leadership within a changing health care environment.

Dr. Sullivan became Senior Principal and Chief Research Officer for the management consulting firm of E. C. Murphy LLC/VHA in 1988 and, as part of her role, worked collaboratively with the VHA Chief Nursing Office on national nursing leadership issues including a jointly authored research study on the impact of organizational redesign.

She assumed the role of Chair/Associate Professor of Nursing at Sacred Heart University, Fairfield, Connecticut, in August 2000, and in 2003, became Director of Interdisciplinary Studies for the College Education and Health Professions. Dr. Sullivan is currently on the boards of the Connecticut Healthcare and Education Facilities Authority, the Nursing Career Center of Connecticut, and serves as the chair of the Connecticut League for Nursing Council of Deans and Directors of Nursing Education.



On left, Rhea Sanford '00 PhD, RN, receives the Eleanor K. Gill Outstanding Alumnae Award for Clinical Excellence in Nursing from Dean Laura Dzurec '74, PhD, RN, CS.

The Eleanor K. Gill Outstanding Alumni Award for Clinical Excellence in Nursing

Dr. Rhea Sanford

Dr. Rhea Sanford has worked in health care for over 30 years. After completing a bachelor's degree with a major in psychology at the University of Connecticut, Dr. Sanford worked in a multi-modality psychiatric service as a mental health worker for ten years. Her education in nursing was achieved through a graduate entry program into nursing at Yale University School of Nursing. During this program, Dr. Sanford changed her clinical focus from behavioral health to medical-surgical nursing care. On graduation in 1986, she entered a position as Clinical Nurse Specialist for medical-surgical nursing at John Dempsey Hospital, University of Connecticut Health Center. This role was an excellent professional match for Dr. Sanford. She remained in that role for 14 years. In 2000, she accepted a position at John Dempsey as Director of areas that have

expanded to include a number of services: case management, staff and patient education, performance improvement, and patient safety. In 2000, Dr. Sanford completed her doctorate in nursing at the University of Connecticut School of Nursing. Her dissertation was a qualitative study of participants' experience of education and teaching during an inpatient stay at a Planetree model hospital.

Dr. Sanford is well known in the state as an educator, sharing data from her doctoral dissertation in patient education while working with a task force at the Connecticut Hospital Association to develop mechanisms to teach aspects of research findings. She received the Nightingale Award for Excellence in Nursing in 2004. Dr. Sanford teaches her patients in a calm, unhurried manner, listening to their questions and providing responses that meet their needs and prepare them for caring for themselves. She holds faculty appointments at UConn and Yale Schools of Nursing and collaborates with home care nursing organizations.

The Marlene Kramer Outstanding Alumni Award for Research in Nursing

Dr. Linda Chafetz

Dr. Linda Chafetz completed her bachelor of science in nursing at the University of Connecticut in 1967. In her first position after graduation, she worked as a Public Health Nurse for the Visiting Nurse Service of New York. This experience, which coincided with the first large wave of deinstitutionalization of the mentally ill and with development of community based mental health systems, motivated her to pursue graduate education in psychiatric-mental health nursing at the University of California, San Francisco (UCSF), where she received her master of science and doctoral degrees.

Dr. Chafetz has practiced in community, in-patient, and emergency psychiatry settings. She taught psychiatric and public health nursing for five years, at the Geneva School of Nursing, Switzerland, before returning to California.



Linda Chafetz '67, RN, DNSc, (center) recipient of Marlene Kramer Outstanding Alumnae Award for Research in Nursing celebrates with her classmates Polly Barey '67 (left) and Jan Nicholson '67.

She is currently a professor in the Department of Community Health Systems at UCSF where she developed one of the first integrated programs in psychiatric and primary care, to meet the needs of high-risk patients.

Her research focuses on individuals with severe and persistent mental disorders, and on their families, with an emphasis on environmental determinants of well being, including informal supports, family care giving, community

resources, and psychiatric treatments. She has conducted research on homelessness and mental illness, on frequently-admitted patients in inpatient services, on outcomes of intensive case management, and the mentally ill with co-occurring substance use disorders. Her most recent work examines the high medical co-morbidity characterizing mentally ill groups and the needs for innovative service models that address their needs. She is currently principal investigator of a randomized clinical trial of "Wellness Training." With over \$1 million in funding, she is testing the benefit of adding an active health promotion component to existing basic primary care services for severely mentally ill adults in San Francisco.

The School of Nursing 2004 Josephine A. Dolan Distinguished Service Awardee was Dr. Mary Ann Cordeau, see page 4 for more information.

The Beverly Koerner Outstanding Alumni Award for Education in Nursing

Dr. Barbara Shaw Witt

Dr. Witt graduated from the University of Connecticut School of Nursing in 1963 with a bachelor's degree and again in 1977 with a master's degree. Her first teaching position was at Southern Connecticut State College where she discovered her love of nursing education. After completing her MSN, she was on the faculty at St. Joseph College and also served as Executive Director of the Connecticut League for Nursing. She completed her doctorate at Columbia University where she focused on nursing education administration. From 1986-1998 she was at the University of Hartford, serving as chair of the Division of Nursing for 11 years. During her tenure, she initiated the graduate nursing program, building four different tracks including one in nursing education. While in Connecticut, Dr. Witt was active in many professional organizations including the Connecticut League of Nursing Deans and Directors Council, the Connecticut League for Nursing, the Connecticut Nurses Association, and Sigma Theta Tau.

In 1998, Dr. Witt moved to Montgomery, Alabama to become the dean of Auburn University at Montgomery (AUM) School of Nursing. Shortly after she arrived in Alabama, she was given the responsibility of consolidating the administration of the Schools of Nursing at AUM and Auburn University. She has achieved a common undergraduate curriculum allowing sharing of instruction across campuses and is in the process of developing



Barbara Shaw Witt '63, '77, EdD, RN (standing second from right) received the Beverly Koerner Outstanding Alumnae Award for Education in Nursing surrounded by her family.

a joint graduate program, building a cohort of tenured faculty, and seeking means of building capacity in the undergraduate programs. Dr. Witt enjoys the challenge of leading two separate schools located 50 miles apart on campuses with very different climates. Currently she is deeply involved in raising funds to support scholarships and faculty research. She says of her work, "I find everyday brings something new; I am constantly stimulated by the students and faculty to build and improve the schools."



Alumni and Friends Society Cabinet

Officers

Lisa-Marie Griffiths '91 MS, President
Advanced Practice Registered Nurse,
UConn's Women Health Services

Gerri Pearson '02 PhD, Vice President
Assistant Professor & Director,
Homecare Program
UConn Health Center Department
of Psychiatry

Judith Neiderwerfer Kelly '73,
Secretary
Family Nurse Practitioner, St. Mary's
Hospital of Amsterdam, NY

Margie Brown '91 MS, Treasurer
Clinical Faculty, School of Nursing,
UConn

Cabinet

Jocelyn Brown Libros '00
ICU-Cardiac, St. Francis Hospital
and Medical Center

Rosemary DiMaggio Courtney '56
Retired, Yale New Haven Hospital

Sharon Ehlers '73
Transplant Case Manager, Oxford
Health Plans

Susan Furlong '96 MS
UMass School of Nursing

Donald St. Onge '84 MS
Practice Manager, Orthopedic
Associates of Windham

Rommy Vreeland '02
Birthing Center Nurse, W. W. Backus
Hospital

Amy Brunquell '04 BS
Pediatric Med/Surg, CT Childrens'
Medical Center

Mary Jane Williams '82 MS
Nursing Associate Professor, University
of Hartford & Emeritus Professor,
Central Connecticut State University

School of Nursing – Upcoming Events

2005 is the 100th Anniversary of Storrs Hall

2005

Tuesday, April 26

Information Session
Avery Point UConn Campus
Academic Bldg Room 301
Time: 6:15pm

Saturday, May 7

Graduate Reception and Commencement
Time: Reception 12:00pm,
Program 12:45pm
Location: Centennial Alumni House
Doors Open at Gampel Pavilion at
1:30 for 2:30pm Ceremony

Sunday, May 8

Undergraduate Convocation/ Pinning Ceremony
Time: 12 noon/Immediately
following Commencement Exercises
Location: Rome Hall

Monday, May 9

Spring Luncheon for Faculty (Current/Emeriti/Retired) and Staff
Time: 12:45pm
Location: Nathan Hale Inn

Monday, June 1

MbEIN Program Information Session
Time: 6:30pm For prospective students
Location: Storrs, Bishop Center

Friday, June 10 – Saturday, June 11

Reunion Weekend 2005
(25th, 50th, 60th & Classic Classes)
Campus wide activities
Friday: School of Nursing
Gathering 2:00pm

Friday, June 17

10th Annual Sheila Packard Memorial Golf Tournament
For more information contact
Carol.polifroni@uconn.edu

Monday, August 29

MbEIN Midway to Becoming a Nurse Make Your Own Ice Cream Sundae Party – The Dairy Bar comes to Storrs Hall
Sponsored by Hartford Hospital
Time: 11:30am –12:15pm
Location: Storrs Hall

Welcome Back to campus all student – Make Your Own Ice Cream Sundae Party
Time: 12:30pm –1:30pm
Location: Storrs Hall

Tuesday, August 30

Clinical Recognition Ceremony for Juniors
Sponsored by SBLLI & the Alumni
& Friends Society

Friday, September 23

End of Life Decision Making in Intensive Care Units
Continuing education conference
sponsored by UConn School of Nursing
& College of Continuing Studies
Time: 8:30am- 4:30pm
Location: Gillman Auditorium,
Hartford Hospital

Saturday, October 1

Scholarship Recognition Brunch
Location: Centennial Alumni
House – Great Hall
Time: 9:30am-11:30am

Friday, October 14

Advisory Board Meeting
Time: 3:30-5:30pm
Location: UConn Foundation
Board Room

9th Annual Alumni Banquet
Location: Centennial Alumni
House – Great Hall
Time: Social Hour 6:00-7:00pm,
Dinner 7:00pm, Program
to follow

Tuesday, December 13

MbEIN Program Pinning Ceremony
Time: Reception 5:30pm,
Ceremony 7:00pm
Location: Rome Hall

Sunday, December 18

Commencement
Location: Jorgensen Auditorium

2006

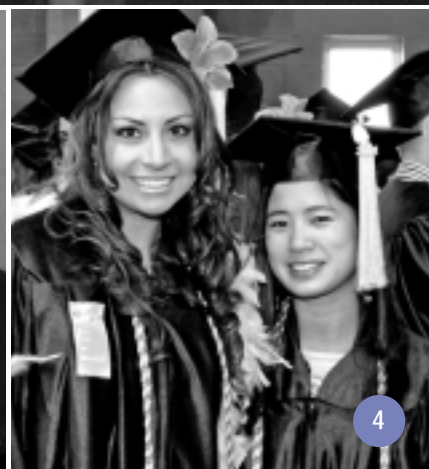
Thursday, April 13

Distinguished Scholars Day
Student Research Presentations,
Networking Luncheon and
Poster Session, & Keynote by
Distinguished Scholar
Location: Rome Hall, South
Campus, Storrs

Friday, June 2 – Saturday, June 3

Reunion Weekend 2006
(25th, 50th, 60th & Classic Classes)
Campus wide activities
Friday: School of Nursing
Gathering, Bus tour & Reception

*For additional information about School of Nursing events, please contact
Kathe Gable by phone at (860) 486-0613, or by email at Kathe.Gable@uconn.edu.*



- 1 Barbara Resnick '78, PhD, RN, CRNP, FAAN, Associate Professor, Department of Organizational, Systems/Adult Health, University of Maryland, Baltimore, is pictured receiving the School of Nursing Distinguished Scholar Award on April 22, 2004 from Dean Laura Dzurec.
- 2 Performing *Light the Fire Within* at the MBEIN Pinning Ceremony on December 10, 2004, Michelle Moody '04 MBEIN is pictured with members of the Children's Chorus (From left to right: Endonesia Octave, Mikayla Cody, Michelle Moody, Jenna Allen, & Josie Bailon. Members of the youth chorus not pictured: Cheyenne Paul, Emma Gifford, & Pamela Pena).
- 3 Pictured at CLN Student Day, December 2, 2004, UConn Nursing Student attendees: from left to right, in back row: Matthew LaPorta, Stephanie Hirsch, Kelly Melaven, Lee Piepul, Naomi Yates; in front row: Melissa Allegra, Linda Chea (Peer Recognition Awardee), and Sreytouch Im.
- 4 Preparing for Commencement procession, Carolina Villamizar, left, and Evelyn Ni, both 2004 graduates, pose for photo.
- 5 Good luck on your finals! Student refreshment table provided by the faculty, staff and alumni of the School of Nursing.





Josephine A. Dolan, Nursing School's First Instructor, Dies at Age 91

By Sherry Fisher
UConn Advance, December 13, 2004

Josephine A. Dolan, professor emeritus of nursing, died December 4 at age 91.

Dolan, of Westborough, Mass., joined the UConn faculty in 1944. She was the first instructor in the School of Nursing, where she taught for more than 35 years.

Dolan was a nurse historian who built a national reputation through the quality of her contributions to nursing education and scholarship. She was the author of the history text about nursing in society.

Laura Dzurec, dean of the School of Nursing, was one of Dolan's students. "Being in the presence of Josephine Dolan always inspired me," Dzurec says. "The effect she had on us as students was powerful and kind. Each year when our reunion classes return to campus, they give testimony about how Jo deeply changed their lives."

Dzurec added, "She integrated many of us over the years into nursing, helping us to learn why we had chosen this challenging path. We are deeply saddened by Jo's passing, knowing still that she died as she lived, with quiet dignity and choice. I will miss her, as will all of us who knew her well."

Eleanor Herrmann, a professor emerita of nursing, says Dolan "inspired many to attain greater achievements in academia and in the nursing profession."

Her impact will continue to be felt through her donation of her extensive collection of nursing history documents to the Thomas J. Dodd Research Center, and her unparalleled collection of nursing history artifacts to the Josephine A. Dolan Room in the School of Nursing, Herrmann says.

Dolan received her initial education in nursing from St. John's Hospital, Lowell, Mass., receiving a diploma in 1935. She earned her bachelor's degree in nursing from Boston University in 1942, and her master's from there in 1950.

Throughout her career, Dolan was an outspoken advocate for promoting, preserving, and teaching nursing history. She was an active member of the University community and served on many University committees.

The University established the Museum of Nursing History in her name, using her collection of nursing artifacts, books, and documents. In 2003, a former student began work to establish a nursing school in Katmandu, Nepal, naming it the Josephine A. Dolan School of Nursing.

Dolan was a member of the Connecticut State Board of Examiners for Nursing (1951-56); the Connecticut League for Nursing, serving on its board of directors (1964-67, 1977-79) and as its president (1967-69); the Connecticut Nurses Association, serving on its board of directors (1960-62); the National League for Nursing, serving on the board of directors (1969-72); and Sigma Theta Tau, the national honor society of nursing, serving as national chair of the nominating committee (1977-80) and president of the Mu Chapter at UConn (1962-65).

Dolan is survived by her brother, Thomas Dolan, and his wife, Claire. A sister, Mary, died in 1983.



Josephine A. Dolan, MS, RN, PdD, DNSc
Professor Emerita (years-2004)

The School of Nursing held a Celebration of the Life of Dr. Josephine A. Dolan on Sunday, April 3, 2005. Alumni, friends, and family attended a Memorial Mass at St. Thomas Aquinas Chapel and a Reception at the School of Nursing. Please join us as we continue to pay tribute to Dr. Dolan. To make arrangements to see the Dolan Room, to reminisce, and to rejoice in the many contributions Dr. Dolan made to the nursing profession, please contact Kathe Gable, by phone at (860) 486-0613, or by email at Kathe.Gable@uconn.edu.

Memorial gifts for Josephine A. Dolan should be made payable to the UConn Foundation and sent to the University of Connecticut Foundation, 2390 Alumni Drive Unit 3206, Storrs, Connecticut 06269. Please indicate the Josephine A. Dolan fund on your check. The Josephine A. Dolan Fund is a restricted fund, which exists for the maintenance, promotion, and development of the Dolan Room and/or the nursing history collection at the School of Nursing.

“School of Nursing Publications Reach Far and Wide – Improving Well Being for All People – Beginning in Connecticut”

Lynn Allchin

Allchin, L. (2004). Bearing witness to decision making. *Illuminations: Newsletter for the International Consortium of Parse Scholars*, 13(1), 3.

Allchin, L. (2004, April). *Grief: The emotional response to loss*. Presented at The Heart of Loss, University of Connecticut College of Continuing Studies, Farmington, CT.

Allchin, L. (2004, April). *The experience of caring for a dying person: The nursing student's perspective*. Poster session presented at University of Connecticut School of Nursing Distinguished Scholar's Day, Storrs, CT.

Allchin, L. (2004, April). *Loss and grief: The art of sympathy*. Poster session presented at University of Connecticut School of Nursing Distinguished Scholar's Day, Storrs, CT.

Allchin, L. (2004, May). *Caring for the dying: The Nursing Student's Perspective*. Poster session presented at 12th Annual Conference for Nurse Educators in Practice Settings and Schools of Nursing, St. Anslem College, Wentworth by the Sea, NH.

Allchin, L. (2004, October). *Caring for the dying: The Nursing Student's Perspective*. Poster session presented at Evidence-Based Practice: Transcultural Research in Cyberspace, 8th Annual Conference of the Institute for Health Care Education and Capitol Area Alliance for Nursing Research and Research Utilization, Hartford, CT.

Allchin, L., (2005, January). *Learned optimism: Personal perspectives on the teaching life*. Presented at The Teaching Tool Kit: A Workshop for Nursing Clinical Faculty, UConn College of Continuing Studies and School of Nursing with University of Hartford School of Nursing, Hartford, CT.

Polifroni, E.C., Allchin, L., & McNulty, J. (2004, April). *Teaching math for medication administration: An intervention*. Poster session presented at University of Connecticut School of Nursing Distinguished Scholar's Day, Storrs, CT.

Polifroni, E.C., Allchin, L., & McNulty, J. (2004, May). *Math competency skills for medication administration: An intervention study*. Poster session presented at 12th Annual Conference for Nurse Educators in Practice Settings and Schools of Nursing, St. Anslem College, Wentworth by the Sea, NH.

Polifroni, E. C., Allchin, L., & McNulty, J. (2004, July). *Math competency skills for medication administration: An intervention study*. Poster session presented at 15th International Research Congress. Sigma Theta Tau International, Dublin, Ireland.

Polifroni, E.C., Allchin, L., & McNulty, J. (2004, October). *Math competency skills for medication administration: An intervention study*. Poster session presented at Evidence-Based Practice: Transcultural Research in Cyberspace, 8th Annual Conference of the Institute for Health Care Education and Capitol Area Alliance for Nursing Research and Research Utilization, Hartford, CT.

Elizabeth Anderson

Anderson, E.H. (2004-2005). *United Who's Who Executive Registry*.

Anderson, E.H., Fishman, S.J., Tummillo, K., Spencer, M.H., & Wlostowski, M. (2004, April). *Factors affecting quality of life in persons with HIV/AIDS*. Poster session presented at University of Connecticut Spring Distinguished Scholars Program, Storrs, CT.

Anderson, E.H., Fishman, S.J., Tummillo, K., Spencer, M.H., & Wlostowski, M. (2004, April). *Factors affecting quality of life in persons with HIV/AIDS*. Poster session presented at 16th Annual Scientific Sessions of Eastern Nurses Research Society, Boston, MA.

Anderson, E.H., Mikky, I., Fishman, S.J., Tummillo, K., & Spencer, M.H. (2004, March). *Do health care relationships affect the quality of life of persons with HIV/AIDS?* Paper presented at Society for Behavioral Medicine 25th Annual Meeting & Scientific Sessions, Baltimore, MD.

Sherry Bassi

Bassi, S. (3/5/04-6/21/04). Tobacco-Free Huskies, *Mobilizing Against Tobacco for Children's Health (MATCH) Coalition*, \$4,995

Cheryl Beck

Beck, C. T. (2004). Post traumatic stress disorder due to childbirth: The aftermath. *Nursing Research*, 53, 216-224.

Beck, C. T. (2004). Birth trauma: In the eye of the beholder. *Nursing Research*, 53, 28-35.

Beck, C. T. (2004, August). *Peripartur depression: What about the children*. Presented at Driscoll Children's Hospital, Corpus Christi, TX.

Beck, C. T. (2004, September). *Postpartum depression: Lifting the veil of silence*. Presented at Working Toward Family Health and Well-being Conference, Robert Gordon University, Aberdeen, Scotland.

Beck, C. T. (2004, November). *Biological and psychological factors associated with emotional disorders of the perinatal period*. Presented at Annual Fall Perinatal Conference, Bethesda North Hospital, Cincinnati, OH.

Beck, C. T. (2004, November). *Peripartur depression: Implications for women and families*. Presented at Annual Fall Perinatal Conference, Bethesda North Hospital, Cincinnati, OH.

Beck, C. T. (2005, February). *Birth Trauma: In the eye of the beholder*. Presented at the 22nd Annual Houston Perinatal Symposium, Houston, TX.

Beck, C. T., Bernal, H., & Froman, R. (2004, September). *Achieving semantic equivalence of a translated scale*. Presented at Marce International Society Biennial Scientific Meeting, Oxford, England.

Clemmens, D., Driscoll, J., & Beck, C. T. (2004). Postpartum depression as profiled through the Postpartum Depression Screening Scale. *MCN: The American Journal of Maternal Child Nursing*, 29, 180-185.

Lammi-Keefe, C., & Beck, C. T., & (2004). Docasahexaenoic Acid in Pregnancy; Postpartum Depression, *Patrick and Katherine Donaghy Medical Research Foundation*, \$240,000.

Polit, D. F., & Beck, C. T. (2005). *Essentials of Nursing Research: Methods, Appraisal, and Utilization*. Philadelphia, PA: Lippincott.

Polit, D. F., & Beck, C. T. (2005). *Study Guide to Accompany Essentials of Nursing Research: Methods, Appraisal, and Utilization*. Philadelphia, PA: Lippincott.

Polit, D. F., & Beck, C. T. (2005). *Instructor's Resource Manual and Textbook to Accompany Essentials of Nursing Research: Methods, Appraisal, and Utilization*. Philadelphia, PA: Lippincott.

Rosanna Colangelo

Colangelo, R. M., Quirici, L., Adams-Babineau, S., & Dzurec, L.C. (2004). Recruitment and Retention Report: Partnering for better patient care. *Nursing Management*, 35(9), 12

Mary Ann Cordeau

Cordeau, M.A. (2004). Connecticut League for Nursing Student Paper Contest, Graduate Division. *United States health policy to smoking and its relevance to nursing practice and nursing leadership*.

Cordeau, M.A. (2004). American Association for the History of Nursing. Competitive Student Research Award, *Acts of Caring: A history of the lived experience of nurse-caring by northern women during the American Civil War*.

Cordeau, M.A. (2004). The University of Connecticut School of Nursing. *Carolyn Ladd Widmer Award*.

Cordeau, M.A. (2004). The University of Connecticut School of Nursing. *The Josephine A. Dolan School of Nursing Distinguished Service Award*.

Cordeau, M.A. (2004, April). *The lived experience of Civil War nurse-caring*. Presented at Distinguished Scholars Day, University of Connecticut, Storrs, CT.

Cordeau, M.A. (2004). [Review of the book Civil War sisterhood: The U.S. sanitary commission and women's politics in transition]. *Nursing History Review*, Volume 12.

Cordeau, M.A., Polit, D., & Beck, C. (2004). Acknowledgement for review of Chapter 11, Historical Research, *Nursing Research: Principles and Methods*.

Cordeau, M.A., & Daisy, C. A. (2004, October). *1904-2004: My how the profession has changed*. Presented at Plenary Panel, Connecticut Nurses' Association 98th Annual Convention One Hundred Years of Connecticut Nursing, Farmington, CT.

Regina Cusson

Cusson, R. M. (2004). *Competence in NNP Education*. Pre-Conference APN Faculty Forum, Neonatal Advanced Practice Nursing Forum 2004, Washington, DC.

Cusson, R.M. (2004). *Visiting Professor*. Florence Nightingale School of Nursing and Midwifery, King's College, London, England.

Cusson, R.M. (2004). Sabbatical research project examining advanced practice neonatal nursing roles in Great Britain. *UConn Research Foundation Large Faculty Award*, \$4,509.

Cusson, R. M. (2004). Examination of advanced practice neonatal nursing roles in Great Britain. *UConn Research Foundation Small Faculty Award*, \$1,000.

Cusson, R. M. (2004, March). *Introduction to structural equation modeling as a measurement technique*. Paper presented at Eastern Nursing Research Society 16th Annual Scientific Session, Quincy, MA.

Cusson, R.M., & Resnick, B. (2004, March). *Methods of measurement: Using structural equation modeling for measurement*. Symposium presented at Eastern Nursing Research Society, Quincy, MA.

Engler, A.J., Cusson, R.M., et al. (2004). Neonatal staff and advanced practice nurses' perceptions of bereavement/end-of-life care of families of critically ill and dying neonates. *American Journal of Critical Care*, 13(6), 489-498.

Carol A. Daisy

Cordeau, M.A., & Daisy, C. A. (2004, October). *1904-2004: My how the profession has changed*. Presented at Plenary Panel, Connecticut Nurses' Association 98th Annual Convention One Hundred Years of Connecticut Nursing, Farmington, CT.

Laura Dzurec

Colangelo, R. M., Quirici, L., Adams-Babineau, S., & Dzurec, L.C. (2004). Recruitment and Retention Report: Partnering for better patient care. *Nursing Management*, 35(9), 12.

Michel, R., Neafsey, P. J., & Dzurec, L.C. (2004). Self-medication practices among patients taking levothyroxine. *Internet Journal of Advanced Nursing Practice*, 6(2), [http://www.ispub.com]

Petrovic, K., & Dzurec, L. C. (2004). The best and worst of times: Cautious optimism and the care of older adults with disabilities. *Connecticut Medicine*, 68, 491-493.

Arthur Engler

Engler, A.J. (2004). Presented at University of Pennsylvania School of Nursing, International Center for Women's, Infant's, and Family Research. Philadelphia, PA.

Engler, A.J., Cusson, R.M., et al. (2004). Neonatal staff and advanced practice nurses' perceptions of bereavement/end-of-life care of families of critically ill and dying neonates. *American Journal of Critical Care*, 13(6), 489-498.

Kathryn Stewart Hegedus

Hegedus, K.S. (2004). *Magnetism: Lydia Hall's Model*. Presented at caring, for a renewed care. 26th annual conference of the International Association for Human Caring, Montreal, Canada.

Hegedus, K.S. (2004). *Lydia Hall's Model: Operationalized in practice*. Poster session presented at 6th Annual Research Day, the University of Connecticut, School of Nursing, Storrs, CT.

Hegedus, K. S., Upreti, T., & Joshee, J. (2004, June). *Empowering all participants: Sharing cultures and curriculum*. Poster session presented at Impact of gender, politics and economics on transcultural nursing and health-care immigrant and other vulnerable populations. 30th Annual Conference of the Transcultural Nursing Society, Alicante, Spain.

Hegedus, K. S., Joshee, J., Dzurec, L. C., & Upreti, T. (2004, December). *A Model of Empowered Curricula Development*. Paper presented at 4th Hispanic Congress of Health Related Professions, annual meeting of NACNAH, San Juan, Puerto Rico.

Barbara Bennett Jacobs

Bennett Jacobs, B. (2004, April). *Surrounding death: A phenomenology of withdrawal of life-sustaining treatment*. Presented at Eastern Nursing Research Society 16th Annual Scientific Session, Quincy, MA.

Bennett Jacobs, B. (2004, April). *Ethical challenges in trauma care*. Presented at 6th Annual Connecticut Trauma Conference, Connecticut Chapter American College of Surgeons Committee on Trauma, Ledyard, CT.

Bennett Jacobs, B. (2004, April) Eastern Nursing Research Society, ENRS 16th Annual Scientific Session, Quincy, MA, *First Place Award for Outstanding Student Paper Presentation*.

Bennett Jacobs, B. (2004, May). *Palliative care and end of life challenges in the Intensive Care Unit*. Presented at 2004 National Trauma Conference, Arlington, VA.

Bennett Jacobs, B. (2004, May). *Ethics Grand Rounds: Rebel surrogate decision making*. Presented at New Milford Hospital, New Milford, CT.

Bennett Jacobs, B. (2004, May). *Artificial hydration and nutrition*. Connecticut Hospital Association, Statewide Ethics Group, Wallingford, CT.

Bennett Jacobs, B. (2004, May). *Care of patients with burns*. Presented at Trauma Nursing Core Course (TNCC), Hartford Hospital, CT.

Bennett Jacobs, B. (2004, May). *Bioethical issues in the Neonatal Intensive Care Unit*. Presented at 22nd Annual March of Dimes, Connecticut Chapter & Association of Women's Health, Obstetric, and Neonatal Nurses (AWHONN) Perinatal Nursing Symposium, Farmington, CT.

Bennett Jacobs, B. (2004, October). *'It's My Duty': The evolution of clinical Ethics in Nursing, codes, cases and consequences*. Presented at Connecticut Nurses' Association 98th Annual Convention One Hundred Years of Connecticut Nursing, Farmington, CT.

Bennett Jacobs, B. (2004, October). *Florence Nightingale Lecture: Making Morality Matter*. Presented at St. Joseph College, West Hartford, CT.

Amy Kenefick

Chen, C., Kenefick, A.L., Tang, S.T., & McCorkle, R. (2004). Utilization of comprehensive geriatric assessment in cancer patients. *Critical Reviews in Oncology and Hematology*, 49(1), 53-67.

Kenefick, A.L. (2004). *Widow's work*. *International Journal of Human Caring*, 8(1): 67-68.

Kenefick, A.L. (2004-2006). Relationship of neurocognitive function to breast cancer treatment and induced menopause, *Congressonally Directed Medical Research Program DoD*, \$200,000.

Kenefick, A.L. (2004). Pain treatment and quality of life: Reducing depression and improving cognitive impairment. *Journal of Gerontological Nursing*, 30(5), 22-29.

Kenefick, A.L. (2004, April). *Blaming the victim? Blaming the system? The relationship of delay to stage of disease at the time of breast cancer diagnosis*. Poster session presented at Scholars' Day, University of Connecticut.

Kenefick, A.L. (2004, April). *Delay and racial disparity in stage at diagnosis in women with breast cancer*. Paper presented at Eastern Nursing Research Society 16th Annual Scientific Session, Quincy, MA.

Kenefick, A.L. (2004, June). *Questioning the information on delay and racial disparities in breast cancer survival*. Paper presented at Association of Women's Health, Obstetric and Neonatal Nurses Annual Convention, Challenging the Status Quo, Tampa, FL.

Kenefick, A.L. (2004). University of Connecticut School of Nursing, *Mary Lawrence Research Development Award*.

Kenefick, A.L., & Schulman-Green, D. (2004). Caring for cognitively impaired nursing home residents with pain. *International Journal of Human Caring*, 8(2), 32-40.

Cynthia Kociszewski

Kociszewski, C. (2004). Spiritual care: A phenomenologic study of critical care nurses, *Issues in Administration*, 33(6), 401-411.

Chanyeong Kwak

Kwak, C. (2004). Strategies for successful clinical nurse specialist's role in Korea. *Nursezine*, 16(07).

Kwak, C. (2004). Racial differences in use of long term care received by the elderly, *Uconn Research Foundation Small Faculty Award*, \$1,000.

Deborah McDonald

McDonald, D., & Molony, S. (2004). Postoperative pain communication skills for older adults. *Western Journal of Nursing Research*, 26, 836-852.

McDonald, D., Thomas, G., Livingston, K., & Severson, J. (2004, March). *Assisting older adults to communicate their pain after surgery*. Paper presented at the American Society of Pain Management Nurses, Myrtle Beach, SC.

McDonald, D., Wiczorek, M., & Walker, C. (2004). Factors affecting learning during health education sessions. *Clinical Nursing Research*, 13, 156-167.

Patiraki - Kourbani, E., Tafas, C., McDonald, D., Papathanassoglou, E., Katsaragakis, S., & Lemonidou, C. (2004). Greek nurses' personal and professional pain experiences. *International Journal of Nursing Studies*, 41, 345-54.

John McNulty

Polifroni, E.C., Allchin, L., & McNulty, J. (2004, April). *Teaching math for medication administration: An intervention*. Poster session presented at University of Connecticut School of Nursing Distinguished Scholars Day, Storrs, CT.

Polifroni, E.C., Allchin, L., & McNulty, J. (2004, May). *Math competency skills for medication administration: An intervention study*. Poster session presented at 12th Annual Conference for Nurse Educators in Practice Settings and Schools of Nursing, St. Anselm College, Wentworth by the Sea, NH.

Polifroni, E. C., Allchin, L., & McNulty, J. (2004, July). *Math competency skills for medication administration: An intervention study*. Poster session presented at 15th International Research Congress, Sigma Theta Tau International, Dublin, Ireland

Polifroni, E.C., Allchin, L., & McNulty, J. (2004, October). *Math competency skills for medication administration: An intervention study*. Poster session presented at Evidence-Based Practice: Transcultural Research in Cyberspace, 8th Annual Conference of the Institute for Health Care Education and Capitol Area Alliance for Nursing Research and Research Utilization, Hartford, CT.

Patricia Neafsey

Michel, R., Neafsey, P.J., & Dzurec, L. (2004). Self medication practices among patients taking levothyroxine. *Internet Journal of Advanced Nursing Practice*, 6(2), [http://www.ispub.com].

Neafsey, P.J. (2005). *Pharmacology Online to accompany Lehne, R. A. Pharmacology for Nursing Care*, 5th ed. Philadelphia: Elsevier. (11 online, self-study modules with interactive animations, learning activities and quizzes.)

Neafsey, P.J., & Donat, D. (2005). Bugs, drugs, and yogurt. *Home Healthcare Nurse*, 23(1), 13-15.

Neafsey, P.J., & Keenan, S. (2004). Gender and opioid analgesic response. *Home Healthcare Nurse*, 22(12), 812-813.

Neafsey, P.J. (2004). Thiazides and selective serotonin reuptake inhibitors can induce hyponatremia. *Home Healthcare Nurse*, 22(11), 788-789.

Neafsey, P.J. (2004). Double trouble: Acetaminophen increases the risk of upper GI complications in people taking NSAIDs. *Home Healthcare Nurse*, 22(9), 641-642.

Neafsey, P.J. (2004). Patching pain with lidocaine. *Home Healthcare Nurse*, 22(8), 562-564.

Neafsey, P.J. (2004). Anticholinergics: Not such a dry topic anymore. *Home Healthcare Nurse*, 22(6), 425-426.

Neafsey, P.J. (2004). Timing is everything. *Home Healthcare Nurse*, 22(5), 338-339.

Neafsey, P.J. (2004). Proton pump inhibitors go over the counter. *Home Healthcare Nurse*, 22(4), 214-215.

Neafsey, P.J. (2004). Of blood bones and broccoli: Warfarin-vitamin K interactions. *Home Healthcare Nurse*, 22(3), 178-184. (CE Article).

Neafsey, P.J. (2004). Adverse self-medication practices among individuals taking SSRI antidepressants. *Home Healthcare Nurse*, 22(2), 80-81.

Neafsey, P.J. (2004). Self-medication practices that alter the efficacy of selected cardiac medications. *Home Healthcare Nurse*, 22(2), 88-100. (CE Article).

Neafsey, P.J. (2004). Low-dose aspirin interactions. *Home Healthcare Nurse*, 22(1), 54-55.

Neafsey, P.J. (2004, October). *Preventing medicine conflicts with touchscreen technology*. Presented at Diabetes and Medication Management & Telehealth Technology for Home Care, Home Care Association of New York 3rd Annual Clinical Technology Conference, Albany, NY.

Neafsey, P.J. & Strickler, Z. (2002, 2004). *Personal Education Software (PEP): Preventing medicine conflicts*. (Interactive "touchscreen" software designed for older adults) Storrs CT: The University of Connecticut.

Antonia Nelson

Nelson, A. M. (2004, April 2). *Older first-time mothering: Readiness and planned intensity*. Poster session presented at Eastern Nursing Research Society 16th Annual Scientific Session, Quincy, MA.

Nelson, A. M. (2004, May 4). *Older first-time mothering: Readiness and planned intensity*. Paper presented at the International Qualitative Health Research Conference, Banff, Canada.

Nelson, A. M. (2004). Award for Outstanding Student Poster – 3rd Place *The Eastern Nursing Research Society 2004 Conference 16th Annual Scientific Sessions*, Quincy, MA.

Nelson, A.M. (2004). A qualitative study of older first-time mothering in the first year. *Journal of Pediatric Healthcare*, 18(6), 284-291.

E. Carol Polifroni

- Polifroni, E. C. (2004, December). *Magnet Mentoring at Hartford Hospital*. Paper presented to Leadership group, Hartford, CT.
- Polifroni, E. C. (2004, December). *1904-2004: My how the profession has changed*. *Connecticut Nursing News*, CT Nurses Association: CT, 12.
- Polifroni, E. C. (2004, December). *Ethics: A journey from the beginning*. *Connecticut Nursing News*, CT Nurses Association: CT, 23.
- Polifroni, E. C., Allchin, L., & McNulty, J. (2004, April). *Teaching math for medication administration: An intervention*. Poster session presented at University of Connecticut School of Nursing Distinguished Scholar's Day, Storrs, CT.
- Polifroni, E. C., Allchin, L., & McNulty, J. (2004, May). *Math competency skills for medication administration: An intervention study*. Poster session presented at 12th Annual Conference for Nurse Educators in Practice Settings and Schools of Nursing, St. Anselm College, Wentworth by the Sea, NH.
- Polifroni, E. C., Allchin, L., & McNulty, J. (2004, July). *Math competency skills for medication administration: An intervention study*. Poster session presented at 15th International Research Congress. Sigma Theta Tau International, Dublin, Ireland.
- Polifroni, E. C., Allchin, L., & McNulty, J. (2004, October). *Math competency skills for medication administration: An intervention study*. Poster session presented at Evidence-Based Practice: Transcultural Research in Cyberspace, 8th Annual Conference of the Institute for Health Care Education and Capitol Area Alliance for Nursing Research and Research Utilization, Hartford, CT.
- Juliette Shellman**
- Bernal, H., Shellman, J., & Reid, K. (2004). Essential concepts in developing community university partnerships: Partners in caring, the Carelink model. *Public Health Nursing*, 27(1), 32-40.
- Coffman, M., Shellman, J., & Bernal, H. (2004). Predictors of cultural self-efficacy in nurses: An integrative review of the literature. *The Journal of Nursing Scholarship*, 36(2), 180-185.
- Coffman, M., Shellman, J., & Bernal, H. (2004, June). *Predictors of cultural self-efficacy in nurses: An integrative review of the literature*. Paper presented at the 30th Annual Transcultural Nursing Society International Conference, Alicante, Spain.
- Jimenez, J., Contreras, J., Shellman, J., & Bernal, H. (2004, June). *The confidence of Spanish nurses in caring for culturally diverse groups*. Paper presentation at the 30th Annual Transcultural Nursing Society International Conference, Alicante, Spain.
- Shellman, J. (2004). Nobody ever asked me before: Understanding life experiences of African-American elders. *Journal of Transcultural Nursing*, 15, 308 - 316.
- Shellman, J. (2004, May). *Providing culturally sensitive care through the use of reminiscence*. Presented at Nurses' Day Seminar, University of Connecticut Health Center, Farmington, CT.

- Shellman, J. (2004, December). *Reminiscence: Personalizing patient care*. Presented at the Connecticut Hospital Association Patient Representative Manager and Director of Volunteer Services Annual Meeting, Wallingford, CT.
- Shellman, J. (2004). The level of cultural self-efficacy among a sample of Spanish nurses. *Sigma Theta Tau, Mu Chapter*, \$750.
- Shellman, J. (2004). University of Connecticut School of Nursing, *Mary Lawrence Research Development Award*.
- Shellman, J. (2004). The effects of a structured reminiscence program on depression and life satisfaction in African American elders. *John A. Hartford Foundation NYU Post Doctoral Fellowship*, \$100,000.
- Shellman, J., Reid, K., Kinabrew, J., Armack, S., Spector, A., & Minitier, C. (2004, April). *Examining the effects of a fall prevention program in CARELINK: A VNA/University/Student/Elder partnership*. Paper presented at the 16th Annual Eastern Nursing Research Society Scientific Sessions, Boston, MA.
- Deborah Shelton**
- Ige, F., Shelton, D. A. (2004). Reducing the risk of sudden infant death syndrome (SIDS) in African American communities. *Journal of Pediatric Nursing*, 19(4), 290-292.
- Shelton, D. A. (2004, January). *Careers in forensic nursing*. Presented at National Student Nurses Association, Regional Meeting.
- Shelton, D. A. (2004, March). *Nurse-managed clinics: A collaborative nursing model to address the gap in primary mental health care*. Presented at Howard University, Division of Nursing, 10th Annual Research Conference.
- Shelton, D. A. (2004, March). *Gap in primary mental health care*. Presented at Howard University, Division of Nursing, 10th Annual Research Conference.
- Shelton, D. A. (2004, April). *Special needs of young offenders with learning disabilities*. Presented at 3rd International Conference on the Care and Treatment of Offenders with Learning Disability, University of Central Lancashire, Preston, UK.
- Shelton, D. A. (2004, April). *Health care for children and adolescents in the American Juvenile Correctional Care System*. Presented at University of Southampton, School of Law, Southampton, UK
- Shelton, D. A. (2004, April). L.E.A.D.: *Leadership, Education, Achievement and Development for prevention of juvenile offending- YR 1 Outcomes*. Presented at the International Association of Psychiatric Mental Health Nurses.
- Shelton, D. A. (2004, July). *Juvenile Offenders with Achievement Difficulties*. Presented at the 29th International Congress on Law and Mental Health Conference, Universite Rene Descartes (Paris V) and Sorbonne, Paris France.
- Shelton, D. A. (2004, August). *Nursing models of care in correctional health*. Louisiana State University, Juvenile Corrections Program, LA.

- Shelton, D. A. (2004, August). L.E.A.D.: *Leadership, Education, Achievement and Development for prevention of juvenile offending- YR 2 Outcomes*. Office of Rural Health, Grantees workshop, Washington, DC.
- Shelton, D. A. (2004, September-October). *Medical management of juvenile justice populations*. Presented at 3rd Annual Psychopharmacology for Advanced Nurses: Prescribing Across the Lifespan, Philadelphia, PA.
- Shelton, D. A. (2004). Experiences of detained young offenders in need of mental health care. *Journal of Nursing Scholarship*, 36(2), 129-134.
- Shelton, D. A. (2004). Lifetime Achievement Award, *International Association of Forensic Nurses*.
- Shelton, D. A. (2005). Nursing behind bars, *International Association of Psychiatric-Mental Health Nurses, small grant award*.
- Shelton, D. A. (2005). Appointment to Comprehensive Systems Change Initiative, *Department of Children and Families and Court Support Services Division, CT*.

Yu (Philip) Xu

- Meyer, T., & Xu, Y. (2005). Academic and clinical dissonance in nursing education: Are we guilty of educational neglect? *Nurse Educator*, 30(2), 2-6.
- Ross, M. C., & Xu, Y. (2004, March). *Cancer risks for Southeast Asians along the central gulf coast*. Presented at the 17th Annual Pacific Nursing Research Conference, Honolulu, HI.
- Wang, B., Xu, Y., Ross, M. C., & Huang, K. (2004, March). *Bias correction in rare events data*. Presented at International Biometric Society Eastern North American Region, Pittsburgh, PA.
- Xu, Y. (2004). Working with Southeast Asian clients: Suggestions from the field. *Home Health Care Management & Practice*, 16(2), 152-155.
- Xu, Y. (2004). Cultural barriers in cancer prevention and control in Asian Americans. *Home Health Care Management & Practice*, 16(4), 307-309.
- Xu, Y. (2004). When East meets West: Cultural values and beliefs and health behaviors. *Home Health Care Management & Practice*, 16(5), 433-435.
- Xu, Y. (2004). Complementary and alternative therapies as philosophy and modalities: Implications for nursing practice, education, and research. *Home Health Care Management & Practice*, 16(6), 534-537.
- Xu, Y. (Ed.). (2004). Cultural Diversity & Community Health [Special Issue]. *Home Healthcare Management & Practice*, 17(3). PAGES?
- Xu, Y. (2004). Culture-based taboos: A comparative perspective. *Home Healthcare Management & Practice*, 17(1), 63-64.
- Xu, Y. (2004). Marquis Company, New Providence, NJ, *Who's Who in America* (58th ed.).
- Xu, Y. (2004). A Chinese perspective on autonomy. *Nursing Ethics: An International Journal for Health Care Professionals*, 11(5), 515-516.
- Xu, Y. (2004). International nurse migration as empowerment: A Chinese Perspective [Letter to the editor]. *Journal of Nursing Scholarship*, 36(3), 18.
- Xu, Y. (2004). A Chinese perspective on autonomy [Letter to the editor]. *Nursing Ethics: An International Journal for Health Care Professionals*, 11(5), 515-516.
- Xu, Y. (2004, March). *Cultural diversity in healthcare*. Presented at Thomas Hospital, Fairhope, AL.
- Xu, Y. (2004, June). *A model for enhancing intercultural communication in nursing education*. Presented at Drexel University Nursing Education Institute, Philadelphia, PA.
- Xu, Y. (2004, June). *Are Chinese nurses a viable source to relieve U.S. nursing shortage?* Poster session presented at AcademyHealth 2004 Annual Research Meeting, San Diego, CA.
- Xu, Y. (2005). U.S. Healthcare system: A critical critique. *Home Health Care Management & Practice*, 17(2), 146-147.
- Xu, Y., & Chang, K. (2004). Chinese Americans. In J. N. Giger & R. E. Davidhizar (eds.), *Transcultural nursing: Assessment & intervention* (4th ed., pp. 407-427). St. Louis, MO: Mosby.
- Xu, Y., & Davidhizar, R. (2004). Conflict management styles of Asian and Asian American nurses: Implications for the nurse manager. *The Health Care Manager*, 23(1), 46-53.
- Xu, Y., & Davidhizar, R. (2004, June). *Conflict management styles of Asian and Asian American nurses: Implications for the nurse manager*. Presented at Drexel University Nursing Education Institute Conference, Philadelphia, PA.
- Xu, Y., Lippold, K., Gilligan, A., Posey-Goodwin, P., & Broome, B. (2004). A model for enhancing intercultural communication in nursing education. *Home Health Care Management & Practice*, 17(1), 28-34.
- Xu, Y., & Ross, M. C. (2004, February). *Cancer risks for Southeast Asians along the central gulf coast*. Poster session presented at the 30th Anniversary of University of South Alabama College of Nursing, Mobile, AL.
- Xu, Y., & Ross, M. C. (2004, April). *Cancer risks of Vietnamese Americans in south Alabama*. Presented at the Sigma Theta Tau International Zeta Gamma Chapter Research Day, University of South Alabama, Mobile, AL.
- Xu, Y., & Ross, M. C. (2004, June). *Cancer risks for Southeast Asians along the central gulf coast*. Poster presented at Academy Health 2004 Annual Research Meeting, San Diego, CA.
- Xu, Y., Ross, M. C., Ryan, R. & Wang, B. (2004, April). *Cancer risks of Vietnamese Americans in south Alabama*. Presented at University of South Alabama Research Council's 11th Annual Research Forum, University of South Alabama, Mobile, AL.
- Xu, Y., Ross, M. C., & Ryan, R. & Wang, B. (2005). Cancer risk factors among Southeast Asian American residents of the U.S. central Gulf coast. *Public Health Nursing* 22(2), 119-129.

Faculty and Staff '04 - '05

Denise Abbate, APRN, BC
Clinical Faculty

Lynn Allchin, PhD, RN
Assistant Professor

Elizabeth Anderson, PhD, APRN
*Associate Professor, Primary Care Master's
Track Coordinator*

Laura Andrews '95, APRN, MS, ACNP
Instructor

Sherry Bassi '91, '93, EdD, APRN, BC
Assistant Professor

Cheryl Beck, DNSc, CNM, FAAN
Professor

JoAnn Blum '01, RN, C, MS
Clinical Instructor

Margie Brown '91, MS, RN
Instructor

Ann Marie McLean Buonocore, MS, RN
Instructor

Pamela Burris, MSN, RN
Clinical Instructor

Edith Bushell, RN
Clinical Faculty

Joan Carpenter, RN, MSN
Clinical Faculty

Christine Carroll, RN, BSN, MBA
Clinical Instructor

Jean Coffey, RN, MS, PNP
Teaching Assistant

Rosanna Colangelo, MSN, RN
Clinical Faculty

Mary Ann Cordeau '04 PhD, RN
*Clinical Coordinator, Instructor &
Assistant Curator, Josephine A.
Dolan Collection*

Anne Cross '98, RN, MSN
Lecturer

Regina Cusson, PhD, RNC, NNP
*Professor, PhD Program & Neonatal
Master's Track Coordinator*

Carol A. Daisy, PhD, RN
*Assistant Professor & RN-MS
Program Coordinator*

Susan Davis, RN, MSN, CEN
Clinical Faculty

Emma Dundon, CPNP
Instructor

Laura Cox Dzurec '74, PhD, RN, CS
Dean & Professor

Arthur J. Engler, DNSc, RNC, CRNP
Assistant Professor

Jill Espelin, MSN, RN
Clinical Faculty

Alice Facente, RN, C, MSN
Instructor

Robert K. Gable, EdD
Lecturer

Linda Garcia, MS, RN
Clinical Instructor

Bette J. Gebrian '77, PhD, RN
Lecturer

Mary Ellen Gonci, MS, RN
Clinical Instructor

Ann Hanson '87, MS, APRN
Clinical Faculty

Kathryn Stewart Hegedus, DNSc, RN
Associate Professor

Kathleen Hiatt '74, MHA, MA, RN
Assistant Dean

Mell Hobson '77, '86, MS, RN
Clinical Instructor

Barbara Bennett Jacobs '02 PhD, MPH, RN
Associate Professor

Karen Jacobs, RN, BSN, MA
Clinical Faculty

Sandra J. Jeroszko, RN, MSN
Clinical Faculty

Christine Johnson '77, MS, RN,
Lecturer

Sherry Kanner, RN, MSN, PNP
Clinical Instructor

Susan Kimper
Instructor-Natchaug Hospital

Amy Kenefick, PhD, FNP, CNM
Assistant Professor

Cynthia Kociszewski, MSN, APRN
Acute Care Master's Track Coordinator

Beverly L. Koerner '70, '73, PhD,
RN, FAAN
Professor

Annette Konicki, MS, APRN-BC, CCRN
Instructor

Chanyeong Kwak, PhD, CCRN
Assistant Professor

Mary Lewis, RN, MSNAPRN
Instructor

Paula McCauley '98, APRN-BC, MS
Lecturer

Kathy Cooper-McDermott, RN, MPH, MSN
Clinical Faculty

Deborah McDonald '81, PhD, RN
Associate Professor

John McNulty '84, MS, RN
Director of Academic Advising

Jeannine Muldoon, PhD, RN
Visiting Professor

Carolyn Mull, PhD, RN
Instructor

Patricia J. Neafsey, PhD, RD
*Professor & Center for Nursing
Research Director*

Antonia Nelson '03 PhD, RNC
Assistant Professor

Kelley Newlin, RN, MS
Clinical Faculty

Nicholas Nicholson '00, '05 MS, RN
Clinical Instructor

Bernadette O'Halloran, MS, RN
Clinical Faculty

Bozena Patykula, MSN, RN
Clinical Faculty

Jeanette Plodek, RN, MSN
Clinical Faculty

E. Carol Polifroni, EdD, RN, CNA, BC
*Associate Professor, Master's Program,
MBeIN Program & Patient Care Services
& Systems Administration Track
Coordinator*

Audrey Reinsmith, RN, MSN
Clinical Faculty

Kathryn Roby '73, RN, MA, MBA
Instructor-New England Home Care

Chris Rooney, RN, MSN
Clinical Faculty

Joanne Roy '86, RN, MS
Clinical Faculty

Mary Rush, PhD, APRN, BC
Clinical Instructor

Eileen Sharpe, RN, MSN, APRN
Instructor-Natchaug

Juliette Shellman '99 MS, '03
PhD, CS, RN
Assistant Professor

Deborah Shelton, PhD, RN, BC
Associate Professor

Peggy Stolfi '70, RN, MSN
Clinical Faculty

Lori Testa, RN, MSN
Clinical Faculty

Jeanne Thomas, MS, RN
Clinical Instructor

Maureen Vildozola, MSN, RN
Clinical Faculty

Tracy Weber '96, RN, MS
Clinical Faculty

Linda Worden, RN, MPH
*Instructor-Worden Eldercare
Counseling*

Yu (Philip) Xu, PhD, RN, CTN
*Associate Professor & Community
Health Nursing Master's Track
Coordinator*

Professional Staff

Pamela Cartledge, MA
Assistant to the Dean

Kim Deely Emery, MA
*Director of Communications and
Integrated Marketing*

Kathe Gable, MS
*Director of Community and Public
Relations*

Elizabeth Garrison
Academic Advising Center, Office Assistant

Lisa Guerra, BS
*Faculty Support, Administrative Service
Specialist*

Min Lin
Director of Business and Finance

Brian Lachapelle, MBA
Director of Development

Lisa M. Santor
Academic Advising Center, Manager

Kathy Mooney
Academic Advising Center, Manager

Lyndsay Nalbadian, BA
Clerk Typist

Credits

Reviewers

Laura Dzurec, Kim Deely Emery,
Kathe Gable, Brian Lachapelle,
Arthur Sorrentino

Photography

Liz Anderson, Kim Deely Emery,
Kathe Gable, University Communications

Graphic Design

Carla Willey

Printer

Racine Company

Contributors

Sherry Bassi, Cheryl Beck,
Mary Ann Cordeau, Laura Dzurec,
Kim Deely Emery, Sherry Fisher,
Kathe Gable, Lisa-Marie Griffiths,
Barbara Bennett Jacobs, Brian
Lachapelle, Antonia Nelson,
Deborah Shelton, Arthur Sorrentino,
Philip Xu

Special Thanks

Laura Koulet, Matthew LaPorta,
Jen Topkin

A Salute to Our History

Emeritus & Retired Faculty

Kate Ahmadi, PhD, RN
Henrietta Bernal '68, '74, PhD, RN
Professor Emerita
Kathleen Bruttomesso, DNSc, RN
Associate Professor Emerita
Peggy Chinn, PhD, RN, FAAN
Professor Emerita
Olga Church, PhD, RN, FAAN
Professor Emerita
Marga Coler, EdD, RN, CS, CTN, FAAN
Professor Emerita
Carolyn D'Avanzo, DNSc, RN
Arlyne Della Donna '58, MS, RN
Assistant Professor Emerita
Margie Freston, CNM, PhD
Audrey J. Fulcher, MS, RN
Elaine M. Geissler, RN, PhD, CTN
Laura Govoni, PhD, RN
Gail Harkness, Dr. PH, RN
Professor Emerita
Janice Hayes, PhD, RN
Professor Emerita
Eleanor K. Herrmann, RN, EdD, FAAN
*Professor Emerita, Josephine A. Dolan
Collection, Curator*
Edna Johnson, PhD, RN
Assistant Professor Emerita
Carol C. Keenan, RN, C, MS
Muriel W. Lessner '68, '75, RN, PhD
Associate Professor Emerita
Jane E. Murdock, RN, EdD
Associate Dean and Professor Emerita
Eileen Murphy, DNSc, RN
Roberta M. Orne, RN, PhD
Assistant Professor Emerita
Judith M. Quinn, MS, RN
Assistant Professor Emerita
Helen "Connie" Mather Scott, RN, PhD
Assistant Professor Emerita
Helen S. Shah, RN, DNSc
Virginia Smith, MS, RN
Linda R. Suess '67, RN, PhD
Assistant Professor Emerita
Janice A. Thibodeau '66, EdD, RN, FAAN
Professor Emerita
Marguerite B. White, RN, EdD
Associate Dean and Professor Emerita
Clara A. "Andy" Williams '56, RN, MS
Assistant Professor Emerita

The Paul L. Jones Fund Contributes to MbEIN Program Success



MbEIN Scholarship Fund Recipients with Mr. Otis, Scholarship Fund Trustee (from left to right): Franklin Jones '04; Rachel Gollnick '04; Jeffrey Otis, Vice President Webster Trust Company, Paul L. Jones Fund Trustee; Joseph Tallercio '04; Jennifer Trainor '04; and Geoffrey Green '04

The Paul L. Jones Fund has made a \$300,000 commitment to fund scholarships for students enrolled in the Master's Entry into Nursing (MbEIN) program.

In announcing the gift, Jeffrey Otis, vice president and trustee of The Paul L. Jones Fund, noted, "We recognize the significant contributions that UConn's School of Nursing has made to the nursing profession in the state and region. The Master's Entry into Nursing program will surely continue this tradition and we are very pleased to provide financial support to ensure its success."

The MbEIN program was established in 2000 to help address a looming crisis in the availability of trained nurses over the next decade. Its purpose is to increase the number of bedside nurses in advanced practice positions, nursing education and research.

Scholarships from The Paul L. Jones Fund will allow the School to accommodate more students and increase the pool of nurses available to fill vacancies in Connecticut and the region. It is expected that these students will continue to have an impact on the quality of nursing and patient care in Connecticut as they go on to complete graduate level degrees.

According to Dean Laura Dzurec, the MbEIN program is making significant contributions in addressing the nursing shortage in Connecticut. "There is incredible enthusiasm among the students and the health care providers for this program. The students bring a maturity and certainty about what they want to do as they practice nursing. We're very grateful to the Paul L. Jones Fund for their support of this important initiative," she said.

Twenty-four students began the MbEIN program in January 2003 and 32 students were admitted for January 2004. Of these, more than half demonstrated significant financial need and, given the accelerated nature of the program, there is little to no time for students to work during the academic year. Dr. Carol Polifroni, the program's coordinator, states that pending resource availability, the school plans to increase annual enrollment to 40 students in 2006.

"We thank the Paul L. Jones Fund for their contributions to enable these students to make nursing their first priority without needing to balance other work responsibilities," Polifroni said. "The scholarships facilitate our ability to meet a student demand and subsequently address the nursing shortage."

*Well Prepared to Meet the Demands of
a Challenging Nursing Career*



Senior nursing students, Matthew LaPorta (left) and Amara Luong (right), are pictured using the School's Universal Patient Simulator, "SimMan™," during a realistic patient-care scenario. Peter Tedone, President of Savings Bank and Life Insurance (SBLI) Company of Connecticut, says "providing opportunities for training on equipment like SimMan™ is one reason that SBLI is supporting the UConn School of Nursing. We are helping to educate the workforce of tomorrow, the young men and women who may be attending to you or your family members in the next few years." In addition to the Clinical Recognition ceremony, SBLI has provided support for equipment for SimMan™ and has made a donation to the School of Nursing's Emergency Aid Fund.

FRS 263100

University of Connecticut
School of Nursing
231 Glenbrook Road, Unit 2026
Storrs, CT 06269-2026

Non-Profit Org.
U.S. Postage
PAID
Storrs, CT
Permit #3

Return Service Requested